



Egerton Gardens, London SW3

Price £750 per week - Furnished







Description

A well presented third floor flat (no lift) in this popular street in the heart of Knightsbridge. The property benefits from heating, hot water and electricity included in the rent and consists of two double bedrooms, one bathroom, reception room and a fully fitted, open plan kitchen. The flat was recently decorated and it is available on a furnished basis. Egerton Gardens is conveniently located moments from the many shopping and transport amenities of Knightsbridge and South Kensington.

Rent is payable on a monthly basis and you may be required to pay more than a month's rent in advance, depending on your circumstances. You will be required to pay a 1 week holding deposit following a successful offer. Utility bills, council tax, telephone line and broadband are not included in the rent.

As well as paying the rent, you may also be required to make some additional permitted payments. If your tenancy does not qualify as an AST, additional fees may apply. Please visit jll.co.uk/fees for details of fees which may be payable when renting a property.

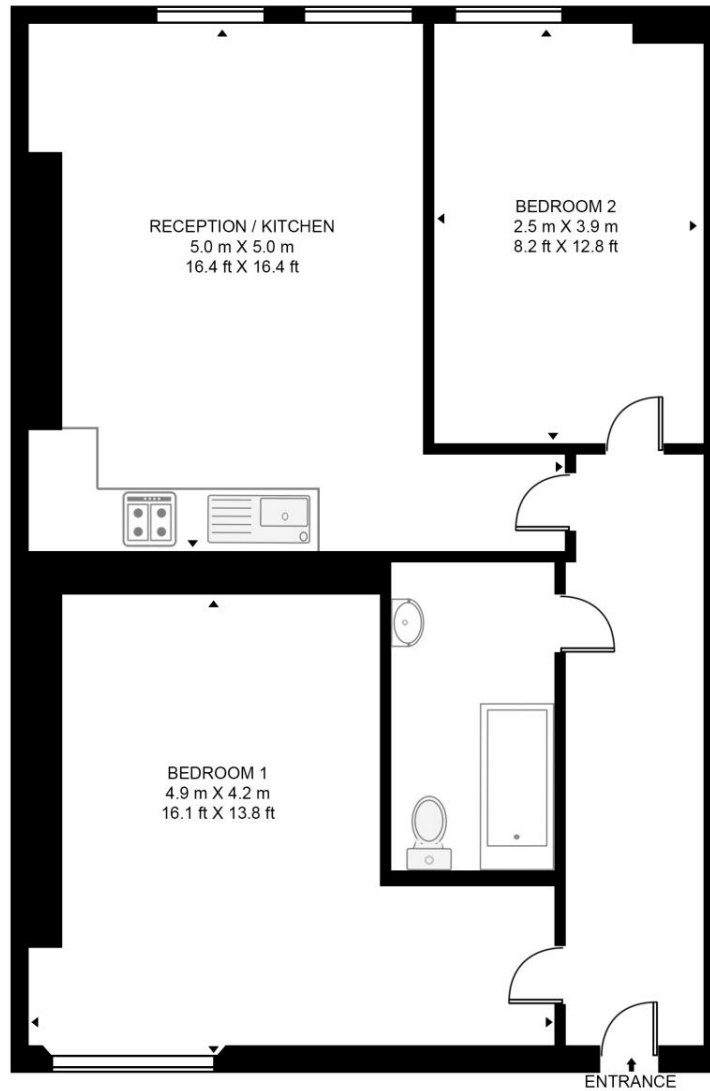
- Two double bedrooms
- Bathroom
- Reception room
- Open plan kitchen
- Third floor
- Approx. 641 sq ft (59 sq m)
- Furnished
- EPC: D
- Council tax: Band E
- Deposit amount: £3,750.00

Floorplan

641 sq ft | 60 sq m

EGERTON GARDENS

APPROXIMATE GROSS INTERNAL FLOOR AREA 641 SQ.FT (59.6 SQ.M)



THIRD FLOOR



This floor plan has been defined by the RICS Code of Measurement. This floor plan and all others are for approximate representative purposes only and upon usage is agreed to as such by the client.
WWW: hdvirtualart.com | TEL: 0203.974.1567 | EMAIL: info@hdvirtualart.com

Knightsbridge
Wood Wharf,
London E14 5GX
+4420 7306 1600
lettingsknightsbridge@eu.jll.co

Urban living, your way.

jll.co.uk/residential

© 2019 Jones Lang LaSalle IP, Inc. All rights reserved. All information contained herein is from sources deemed reliable; however, no representation or warranty is made to the accuracy thereof.

