



Bridgeman House, London W14

Asking price £1,850,000 Leasehold







Description

Welcome to this stunning 2 bedroom 7th-floor apartment, boasting a contemporary design, situated in a prime location just off Kensington High Street.

As you step inside, you'll immediately notice the convenience of storage cupboards in the hallway. The apartment features 2 spacious double bedrooms, one complete with an en-suite bathroom, residents will also have access to a well-appointed communal bathroom. The heart of this home lies in its open-plan kitchen/reception adorned with floor-to-ceiling picture windows that flood the space with natural light. It also provides direct access to a delightful south-facing private balcony.

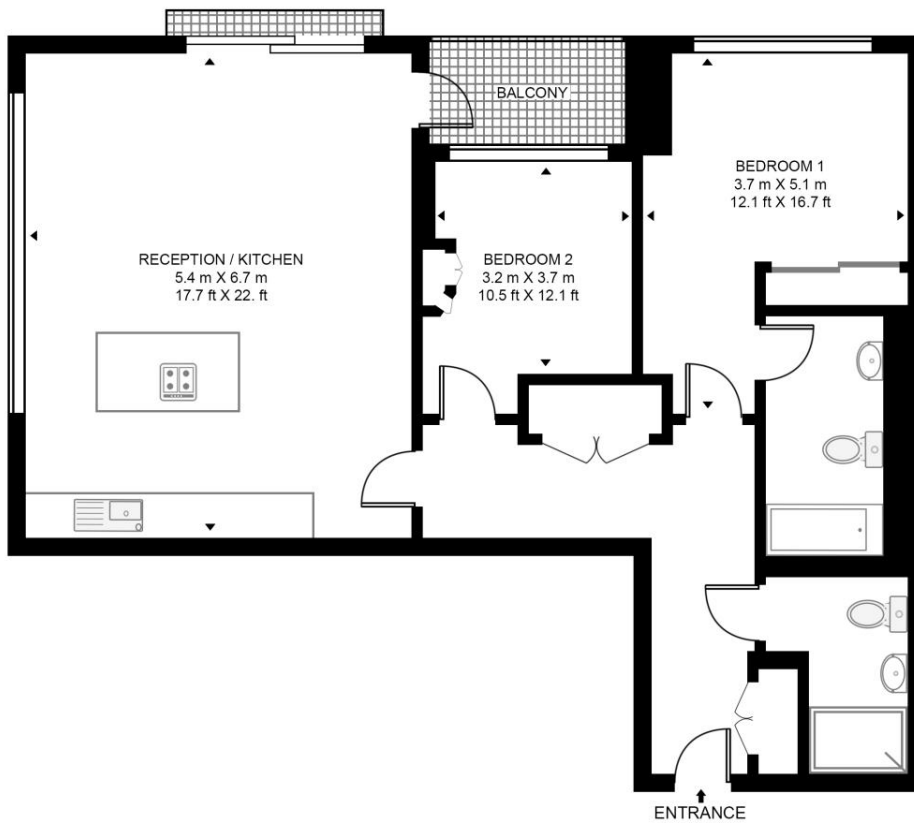
Residents of this development are privileged with an array of top-notch amenities. From the round-the-clock concierge service providing convenience and peace of mind, to the state-of-the-art leisure facilities including a swimming pool, gym, cinema room, business suite, and inviting communal gardens. Kensington Olympia Overground station is within 0.3 miles, providing convenient connections to various parts of London and beyond. The area is well-served by bus routes, offering further options for travel and exploration. With cycling routes readily accessible, alternative commuting options are also available.

- 2 Double bedrooms
- 2 Bathrooms
- Private balcony
- 998 sq ft / 93 sq m
- 24 Hr concierge
- Residents facilities
- 0.3 miles to Kensington Olympia station
- EPC B

Floorplan

998 sq ft | 93 sq m

BRIDGEMAN HOUSE, KENSINGTON HIGH STREET
APPROXIMATE GROSS INTERNAL FLOOR AREA 998 SQ.FT (92.7 SQ.M)



SEVENTH FLOOR



This floor plan has been defined by the RICS Code of Measurement. This floor plan and all others are for approximate representative purposes only and upon usage is agreed to as such by the client.
WWW: hdvirtualart.com | TEL: 0203.974.1567 | EMAIL: info@hdvirtualart.com

Kensington
387 Kensington High Street,
London W14 8QA
+4420 7087 5696
lettingskensington@eu.jll.com

Urban living, your way.

jll.co.uk/residential

© 2019 Jones Lang LaSalle IP, Inc. All rights reserved. All information contained herein is from sources deemed reliable; however, no representation or warranty is made to the accuracy thereof.

