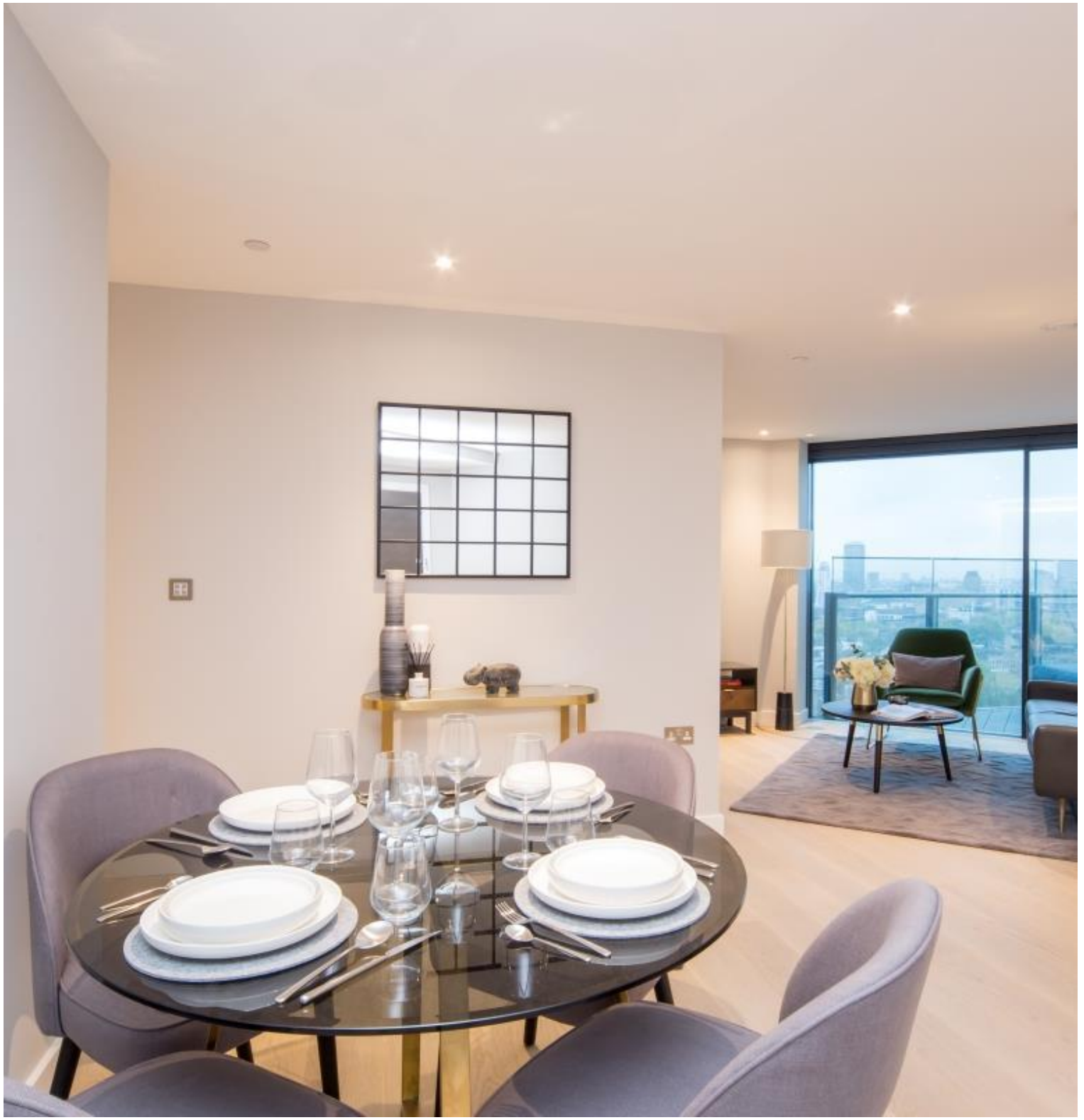




# Churchyard Row, London SE11

Price £3,010 per month - Furnished









## Description

UNCLE is in one of the tallest high-rise buildings in London. This spacious one-bedroom apartment is furnished to an exceptional standard. The apartment has an open plan design and is finished to a high specification throughout, benefitting from a stylish kitchen with integrated Siemens appliances, spacious living and dining area leading to a large private balcony, contemporary bathroom, bedroom designed with built in wardrobes and wood floor throughout.

Pictures for illustration purposes.

Residents have access to a range of amenities, including a 24 hour residents' gym and a 45th floor sky lounge with panoramic views, and access to high speed fibre broadband up to 1GB. UNCLE has a 24/7 on site team to whom are dedicated to bringing high-quality homes and renting as it should be. UNCLE believes you shouldn't have to own a home to be treated like a home owner.

UNCLE is well situated for the City and central London and just 2 minutes' walk from Elephant & Castle station, providing access to the Northern line, Bakerloo line and Thameslink.

We understand that cooling / heating is delivered via a commun

- Modern Apartment
- 30th Floor
- Balcony
- 24hr Concierge
- Residents Gym
- Residents Lounge and Workspace
- Open-Plan Kitchen
- Furnished
- Wooden Flooring
- Pictures for Illustration

# Floorplan

765 sq ft | 71 sq m

Mayfair and Marylebone  
13a St George Street,  
London W1S 2FQ  
+44 207 399 5550  
[mayfair@jll.com](mailto:mayfair@jll.com)

*Urban living, your way.*

[jll.co.uk/residential](http://jll.co.uk/residential)

© 2019 Jones Lang LaSalle IP, Inc. All rights reserved. All information contained herein is from sources deemed reliable; however, no representation or warranty is made to the accuracy thereof.

