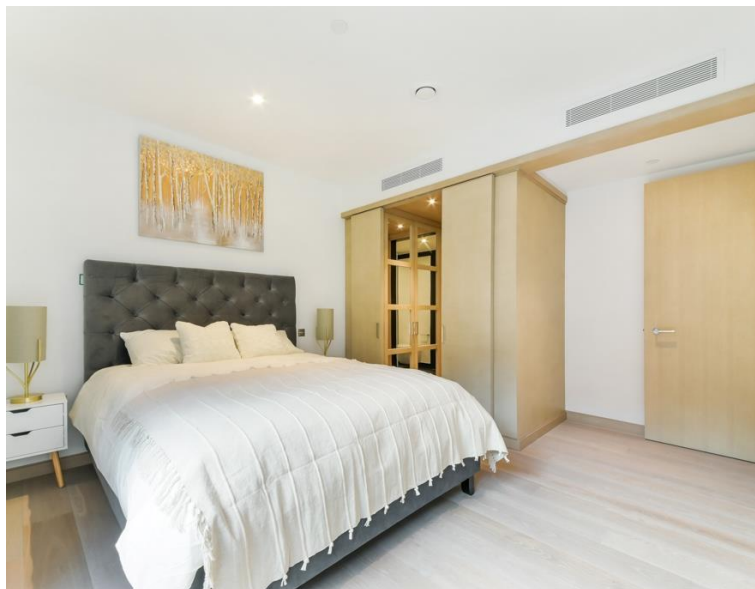




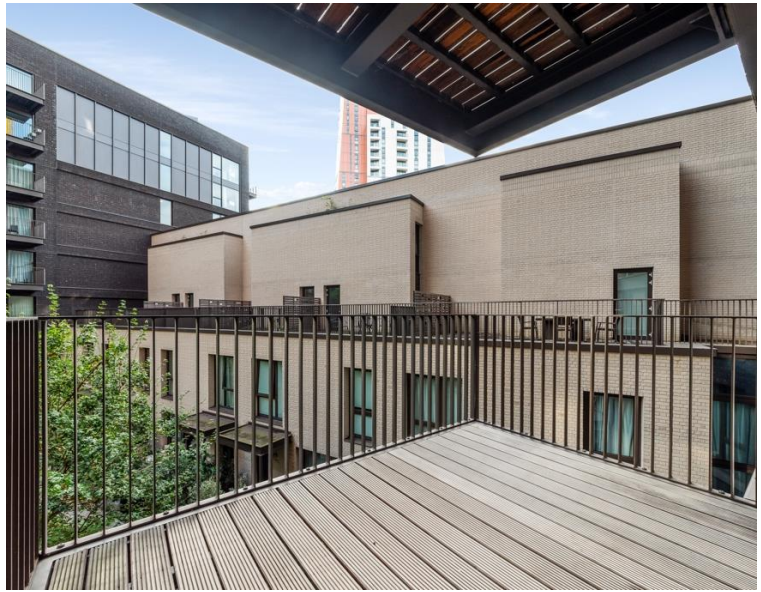
# Embassy Gardens, London SW11

Asking price £1,199,000 Leasehold









## Description

A 2 bedroom apartment in the sought after Embassy Gardens. The luxury development boasts excellent residents facilities including a 24 hour concierge, gym, sky pool, cinema, pool and spa, lounge, meeting room and lobby.

The apartment comprises of an open plan reception with fully fitted kitchen, private balcony, master bedroom with dressing area and en suite bathroom including dual sinks, second double bedroom with fitted wardrobes, contemporary shower room, excellent storage.

Embassy Gardens boasts excellent residents benefits including a 24 hour concierge, private cinema, business center and extensive leisure facilities such as a residents' gym and swimming pool with steam room and sauna.

This luxury apartment is located in the heart of Nine Elms with on site restaurants, bars, cafes, shops. It is excellently located with access to the transport links of Vauxhall mainline, Nine elms and Battersea power station stations.

Leasehold: , EPC: , Approx. 934 sq ft

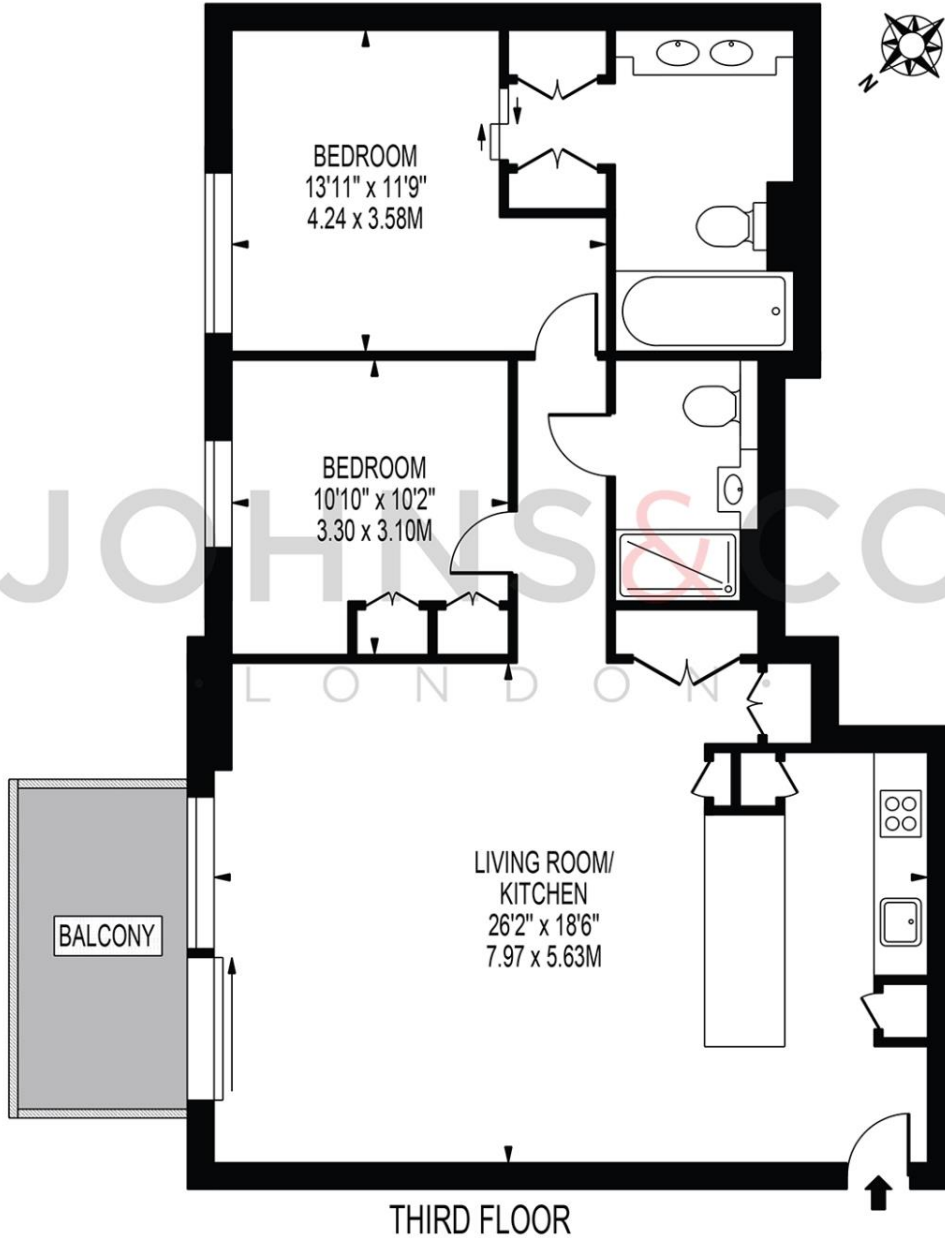
- Located opposite US Embassy
- Luxury facilities including the world famous Sky Pool
- Surrounded by green space
- Pet friendly
- A large two bedroom flat offering expansive living spaces
- Leasehold
- Approx. 934 Sq Ft

# Floorplan

932 sq ft | 87 sq m

## LEGACY BUILDING

APPROXIMATE GROSS INTERNAL FLOOR AREA: 932 SQ FT - 86.59 SQ M



FOR ILLUSTRATION PURPOSES ONLY

THIS FLOOR PLAN SHOULD BE USED AS A GENERAL OUTLINE FOR GUIDANCE ONLY AND DOES NOT CONSTITUTE IN WHOLE OR IN PART AN OFFER OR CONTRACT. ANY INTENDING PURCHASER OR LESSEE SHOULD SATISFY THEMSELVES BY INSPECTION, SEARCHES, ENQUIRIES AND FULL SURVEY AS TO THE CORRECTNESS OF EACH STATEMENT. ANY AREAS, MEASUREMENTS OR DISTANCES QUOTED ARE APPROXIMATE AND SHOULD NOT BE USED TO VALUE A PROPERTY OR BE THE BASIS OF ANY SALE OR LET.

Nine Elms  
4 Riverlight Quay,  
London SW11 8DG  
+4420 3147 1333  
lettingsnineelms@eu.jll.com

*Urban living, your way.*

[jll.co.uk/residential](http://jll.co.uk/residential)

© 2019 Jones Lang LaSalle IP, Inc. All rights reserved. All information contained herein is from sources deemed reliable; however, no representation or warranty is made to the accuracy thereof.

