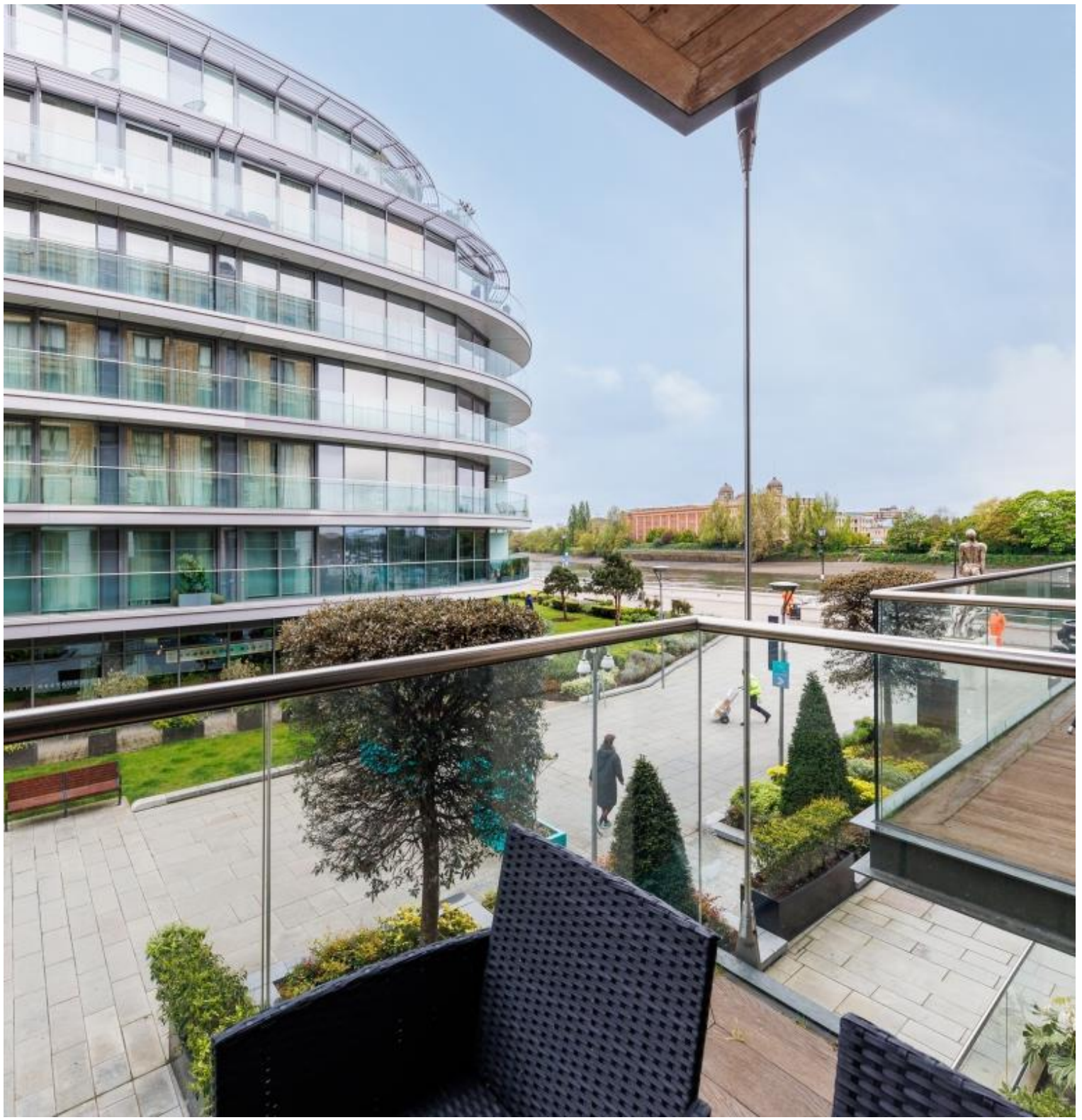




## Distillery Wharf, London W6

Asking price £3,750,000 Leasehold







## Description

Introducing a remarkable 3 bedroom riverside apartment located at Distillery Wharf, Parr's Way. This stunning 1st floor residence offers a well-thought-out layout, conveniently spanning across a single level.

Bathed in natural light throughout the day, the spacious south-facing dual aspect reception area is an inviting space that is perfect for social gatherings or enjoying quiet relaxation. The property features 5 balconies providing outdoor escape points to immerse yourself in the neighbouring river views.

The main bedroom opens onto 2 private balconies, allowing you to bask in the glorious morning sun or unwind with a glass of wine in the evening. Additionally, each of the other two bedrooms boasts en-suite bathrooms and offers access to their exclusive balconies.

There is also an additional guest WC for convenience and privacy for both residents and visitors alike.

This property combines contemporary elegance with a prime London address on the banks of the River Thames with Hammersmith station being within half a mile.

Residents' benefits include swimming pool, spa, and virtual golf as well as riverside walks.

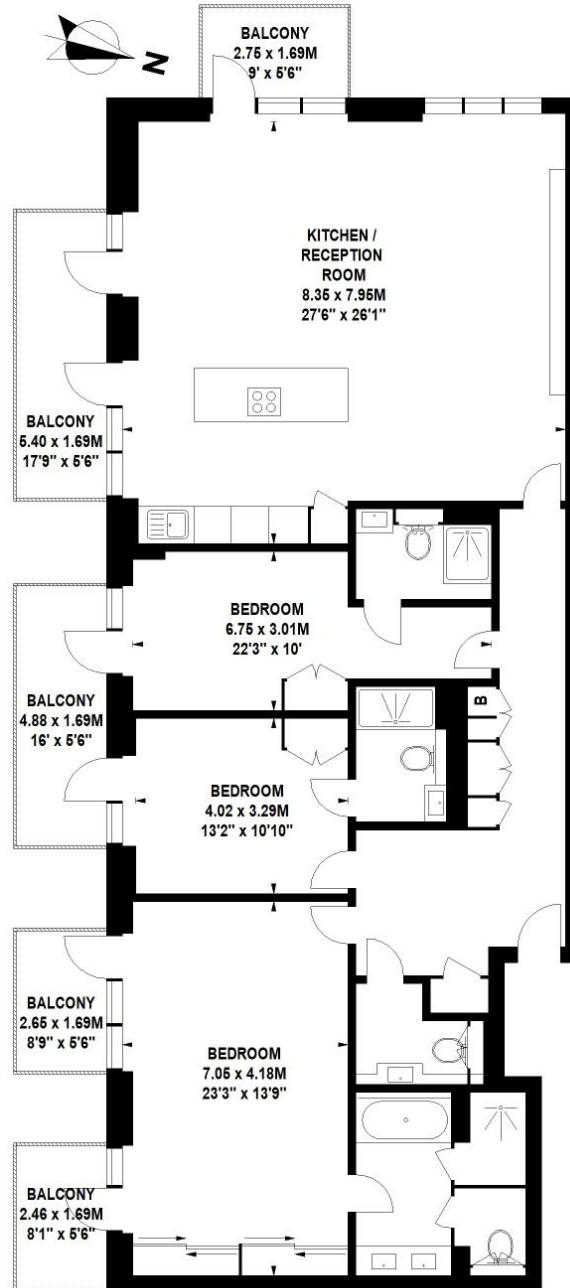
- Riverside apartment
- 3 Double bedrooms
- 3 Bathrooms
- Dual aspect reception
- 5 Balconies
- Views to Thames river
- Hammersmith Station within half a mile
- 1862 sq ft / 173 sq m
- EPC B

# Floorplan

1,862 sq ft | 173 sq m

## Distillery Wharf, W6

Approximate Gross Internal Area 173 sq m / 1862 sq ft



### First Floor

Floor Plan produced for JLL - Kensington by Mays Floorplans © . Tel 020 3397 4594  
Illustration for identification purposes only, not to scale  
All measurements are maximum, and include wardrobes and window bays where applicable

Kensington  
387 Kensington High Street,  
London W14 8QA  
+4420 7087 5696  
lettingskensington@eu.jll.com

*Urban living, your way.*

[jll.co.uk/residential](http://jll.co.uk/residential)

© 2019 Jones Lang LaSalle IP, Inc. All rights reserved. All information contained herein is from sources deemed reliable; however, no representation or warranty is made to the accuracy thereof.

