



Brompton Square, London SW3

Price £450 per week - Furnished





Description

A bright first floor flat (with lift) in this period conversion on the western side of this much sought after garden square. The property consists of one double bedroom, one bathroom, reception room and a fully fitted kitchen. The flat is light and bright and it also offers a balcony and use of the wonderful Square gardens. Brompton Square is ideally located for the many transport and shopping amenities of both Knightsbridge and South Kensington.

Rent is payable on a monthly basis and you may be required to pay more than a month's rent in advance, depending on your circumstances. You will be required to pay a 1 week holding deposit following a successful offer. Utility bills, council tax, telephone line and broadband are not included in the rent. As well as paying the rent, you may also be required to make some additional permitted payments. If your tenancy does not qualify as an AST, additional fees may apply. Please visit jll.co.uk/fees for details of fees which may be payable when renting a property.

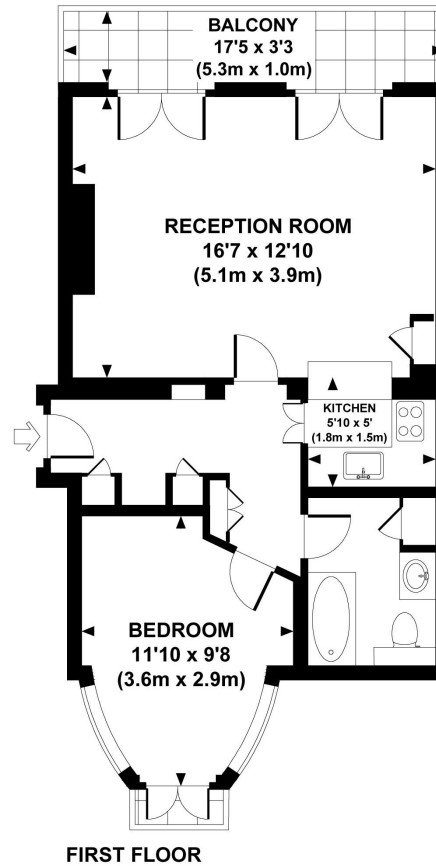
- 1 Double bedroom
- 1 Bathroom
- Reception room
- Fully fitted kitchen
- First floor
- Lift
- Balcony
- Use of communal gardens
- Approx. 463 sq ft (43 sq m)
- Furnished



Floorplan

463 sq ft | 43 sq m

Approx. gross internal area
463 Sq.Ft. / 43.0 Sq.M



ESP All measurements are approximate and for illustration purposes only as defined by the RICS Code of Measuring Practice in 2013. Dowling Jones Design www.dowlingjones.com 020 7610 9913

Knightsbridge
Wood Wharf,
London E14 5GX
+4420 7306 1600
lettingsknightsbridge@eu.jll.co

Urban living, your way.

jll.co.uk/residential

© 2019 Jones Lang LaSalle IP, Inc. All rights reserved. All information contained herein is from sources deemed reliable; however, no representation or warranty is made to the accuracy thereof.

