



Monck Street, London SW1P

Price £1,100 per week - Furnished





Description

A luxury sixth floor apartment (with lift) in this landmark development in the heart of Westminster. The property comprises master bedroom with en suite bathroom, second double bedroom, one further bathroom, reception room and modern open plan kitchen.

The apartment benefits from a large balcony, as well as comfort cooling and underfloor heating. Westminster Quarter offers fantastic facilities including residents' courtyard and landscaped roof gardens with fantastic views, a 24 hour concierge service and use of the gymnasium. The development is located close to the transport links and shops of Victoria, as well as Westminster landmarks such as the Houses of Parliament, St James's Park and Buckingham Palace.

Rent is payable on a monthly basis and you may be required to pay more than a month's rent in advance, depending on your circumstances. You will be required to pay a 1 week holding deposit following a successful offer. Utility bills, council tax, telephone line and broadband are not included in the rent. As well as paying the rent, you may also be required to make some additional permitted payments. If your tenancy does not qualify as an AST, additional fees may apply. Please visit jll.co.uk/fees for details of fees which may be payable when renting a property.

- Master bedroom with en suite bathroom
- Second double bedroom
- 1 Further bathroom
- Reception room
- Modern open plan kitchen
- Balcony
- Sixth floor
- Lift
- 24 hour concierge
- Residents' gym



Floorplan

1,121 sq ft | 104 sq m

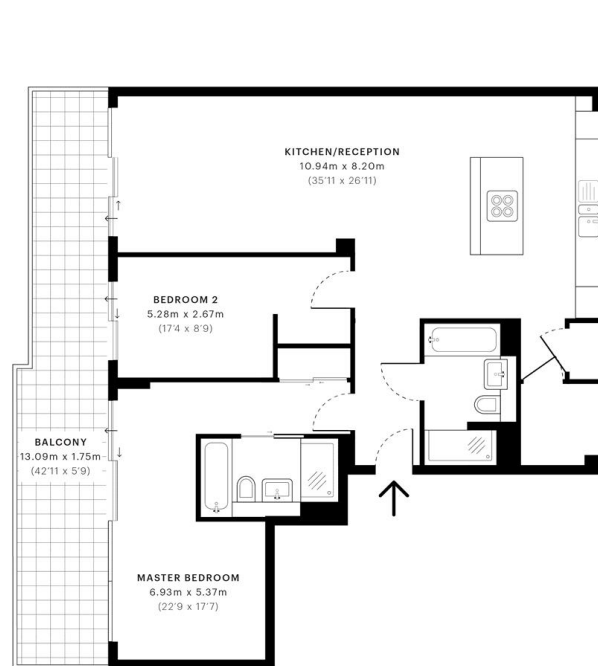


Ashley House, SW1P

CAPTURE DATE
22/07/2019

LASER SCAN POINTS
35,496,328

GROSS INTERNAL AREA
104.2 Sqm / 1121.3 Sqft



— Sixth Floor

GROSS INTERNAL AREA
The footprint of the property
104.2 Sqm / 1121.3 Sqft

NET AREA (INTERNAL)
Excludes walls and internal features
100.1 Sqm / 1076.9 Sqft

EXTERNAL STRUCTURAL FEATURES
Balconies, terraces, verandas etc.
20.8 Sqm / 223.4 Sqft

RESTRICTED HEAD HEIGHT
Limited use area under 1.5m
0.0 Sqm / 0.0 Sqft



Spec floor plans are produced in accordance with the Royal Institution of Chartered Surveyors' Property Measurement Standards. Plots and gardens are illustrative only and are excluded from all area calculations. Due to rounding, numbers may not add up precisely.



IPMS 2B RESIDENTIAL
126.7 Sqm / 1358.8 Sqft
IPMS 3C RESIDENTIAL
122.1 Sqm / 1314.4 Sqft

SPEC ID:
5d3057d08c0ef60a0d0e386c

Knightsbridge
174 Brompton Road,
London SW3 1HP
+4420 7306 1600
SalesKnightsbridge@jll.com

Urban living, your way.

jll.co.uk/residential

© 2019 Jones Lang LaSalle IP, Inc. All rights reserved. All information contained herein is from sources deemed reliable; however, no representation or warranty is made to the accuracy thereof.

