



Rathbone Place, London W1T

Price £820 per week - Furnished, Part Furnished, Unfurnished





Description

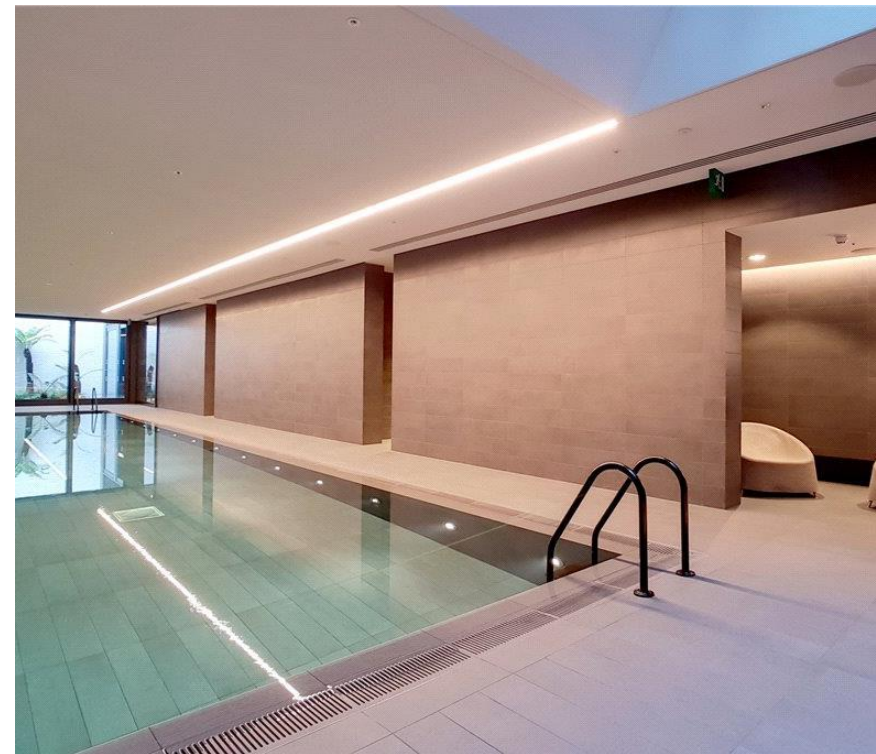
This large studio apartment is set on the 1st floor and offers spacious open-plan living. There is a fully fitted kitchen with dining area, and a reception area situated by the large window which allows in lots of natural light and a bedroom area with built-in storage. There is also a modern bathroom with a walk-in shower. The apartment is furnished and has wooden flooring throughout.

Residents have access to a 24-hour concierge, gym, swimming pool, sauna and steam room, beautiful gardens, residents' lounge, wine storage and tasting room, screening room, Moments from Oxford Street and located in the heart of London's West End, Rathbone Square is ideal for transport links in and around London with The City and West London being just 10 minutes away via the underground.

We understand that cooling / heating is delivered via a communal system for which separate charges apply.

Rent is payable on a monthly basis and you may be required to pay more than a month's rent in advance, depending on your circumstances. You will be required to pay a 1 week holding deposit following a successful offer. Utility bills, council tax, telephone line and broadband are not included in the rent. As well as paying the rent, you may also be required to make some additional permitted payments. If your tenancy does not qualify as an AST, additional fees may apply. Please visit jll.co.uk/fees for details of fees which may be payable when renting a property.

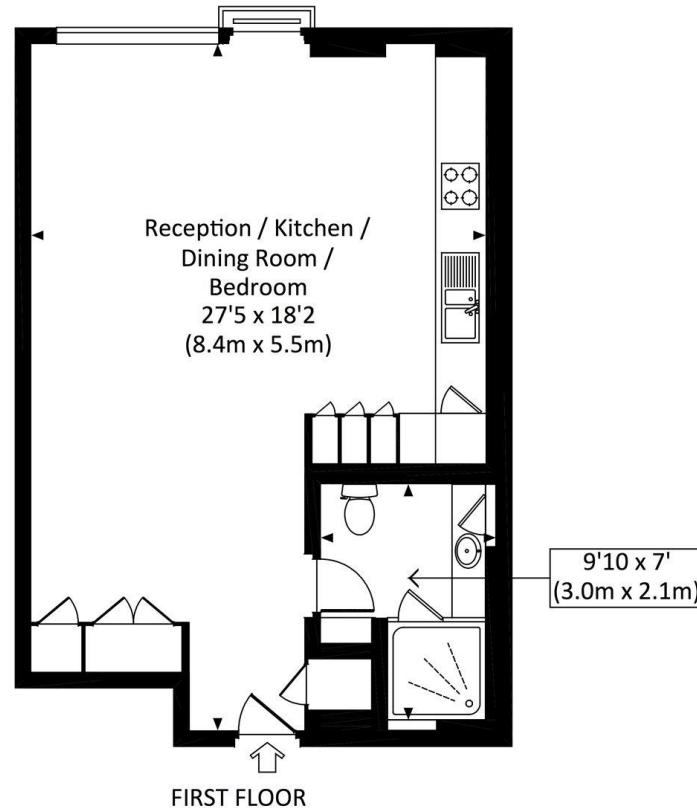
- Large Studio Apartment
- Approx. 45.2sqm / 487 sqft
- 24 Hour Concierge
- Open Plan Kitchen
- Lots of Storage
- Residents Gym
- Swimming Pool
- Sauna & steam Room
- Council Tax Band E
- Deposit: £4,100



Floorplan

487 sq ft | 45 sq m

Approx. gross internal area
487 Sq Ft. / 45.2 Sq M.



dp All measurements have been made in accordance with RICS Code of Measuring Practice which are approximate only and only for illustrative purposes. For the avoidance of doubt, Dowling Jones Design shall not be liable for any reliance on these measurements. © 2018 www.dowlingjones.com 020 7610 9933

Mayfair and Marylebone
13a St George Street,
London W1S 2FQ
+44 207 399 5550
mayfair@jll.com

Urban living, your way.

jll.co.uk/residential

© 2019 Jones Lang LaSalle IP, Inc. All rights reserved. All information contained herein is from sources deemed reliable; however, no representation or warranty is made to the accuracy thereof.

