

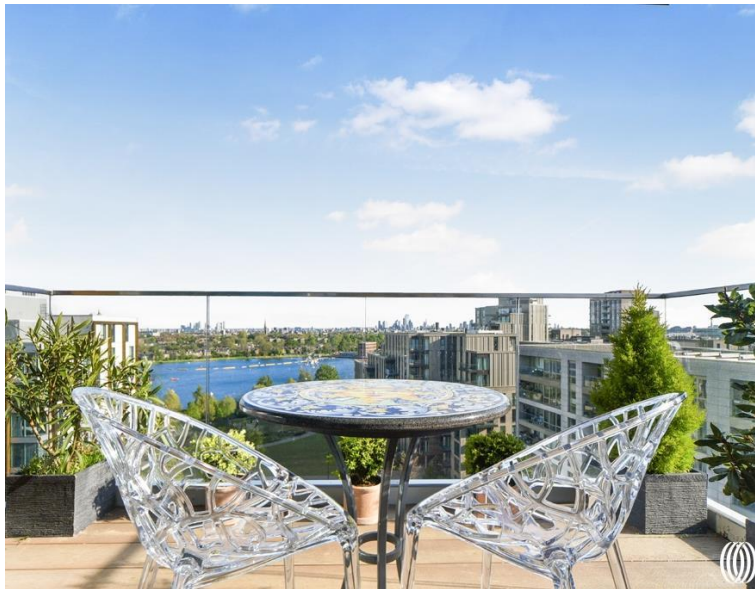


# Woodberry Down, London N4

Guide price £760,000 Leasehold







## Description

Stunning 9th floor 2 bedroom, 2 bathroom property in Odell House, part of the sought after Woodberry Down development.

Well positioned and beautifully presented this property offers stunning views of the west reservoir and city skyline which can be enjoyed from a private balcony. The living area is bright and spacious and benefits from dual aspect floor to ceiling windows. The kitchen is open plan with integrated appliances and lots of storage space. There is a breakfast bar for informal dining.

The master bedroom has a floor to ceiling window and offers a large built in wardrobe and en-suite bathroom with bath and overhead shower. The second bedroom, currently used as an office space, also has built in storage and is a good size double room. It has a floor to ceiling window with views of the reservoir.

There is a separate bathroom with a walk in shower and a large utility cupboard for the washing machine and additional storage. There is additionally a 24 hour concierge, communal cycle storage and access to a residents' fitness suite.

Odell House forms part of Woodberry Down's Park Collection, just north of the Spring Park and East Reservoir and within a st

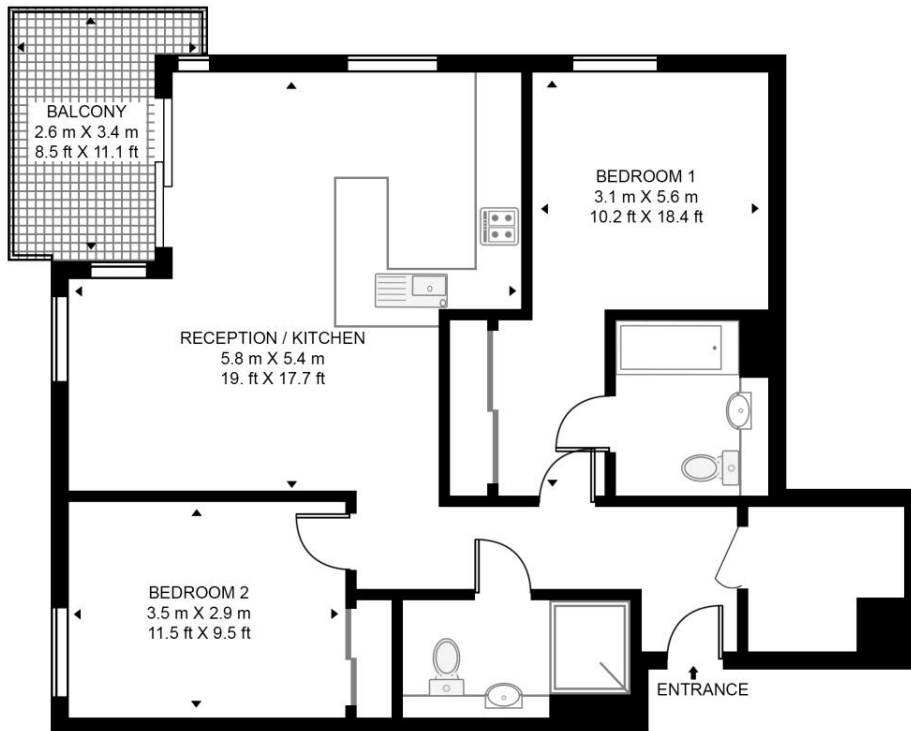
- 2 Bedrooms
- 2 Bathrooms
- South facing private balcony
- 24 hour concierge
- Residents' gym and pool
- Close to transport links
- EPC B
- Council Tax: Band D, Borough of Hackney

# Floorplan

764 sq ft | 71 sq m

## ODELL HOUSE

APPROXIMATE GROSS INTERNAL FLOOR AREA 764 SQ.FT (71 SQ.M)



## NINTH FLOOR



This floor plan has been defined by the RICS Code of Measurement. This floor plan and all others are for approximate representative purposes only and upon usage is agreed to as such by the client.  
WWW: [hdvirtualart.com](http://hdvirtualart.com) | TEL: 0203.974.1567 | EMAIL: [info@hdvirtualart.com](mailto:info@hdvirtualart.com)

Finsbury Park  
Woodberry Park,  
London N4 2BL  
0203 147 1964  
[lettingsfinsburypark@eu.jll.co](mailto:lettingsfinsburypark@eu.jll.co)

*Urban living, your way.*

[jll.co.uk/residential](http://jll.co.uk/residential)

© 2019 Jones Lang LaSalle IP, Inc. All rights reserved. All information contained herein is from sources deemed reliable; however, no representation or warranty is made to the accuracy thereof.

