



Resident  
Residents  
only  
P  
Mon - Fri  
8.30 am - 10 pm  
Sat  
8.30 am - 5.30 pm

Mallord Street SW3



A charming and comfortable family house arranged over only three floors and in the same ownership for over thirty years. It is set back from the street and having a substantial south-facing garden at the rear.

Mallord Street is located just to the north of the King's Road and joins Old Church Street with The Vale. It has an artistic provenance being named after Joseph William Mallord Turner and having Augustus John and the author A.A. Milne as some of its famous past residents.





### ACCOMMODATION

- Five bedrooms
- Bathroom
- En-suite shower room
- Cloakroom
- Dining room/study
- Drawing room
- Kitchen/ dining room
- Entrance hall
- Garden

Planning permission was granted 7/3/22 for internal alterations to the existing layout and the creation of a basement. Please refer to RBK&C's planning portal. Ref: PP/22/00157.

### TERMS

Guide Price:  
£4,500,000

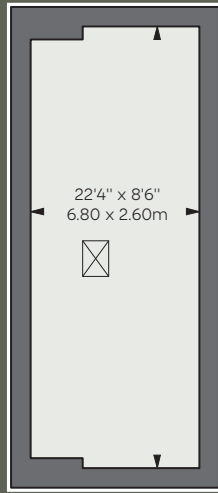
Tenure: Freehold

EPC: Rating D

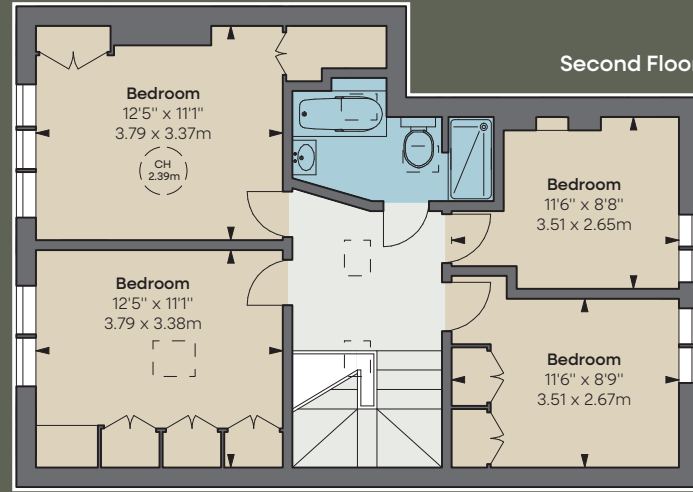
Local Authority:  
The Royal Borough of  
Kensington & Chelsea

Council Tax: Band H

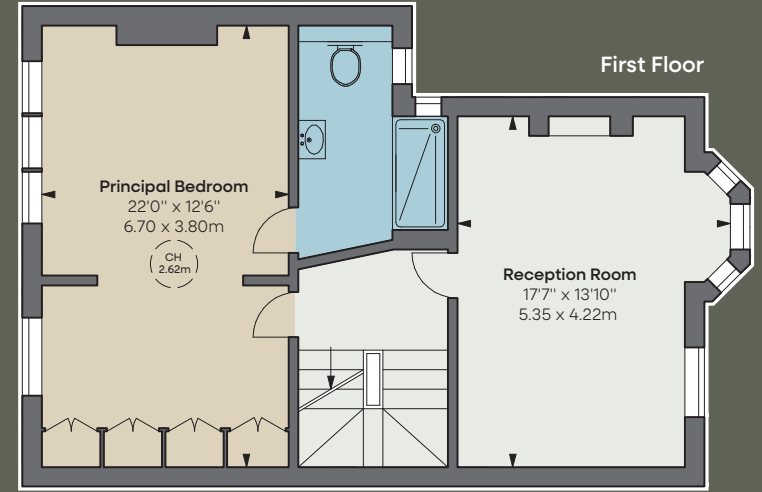




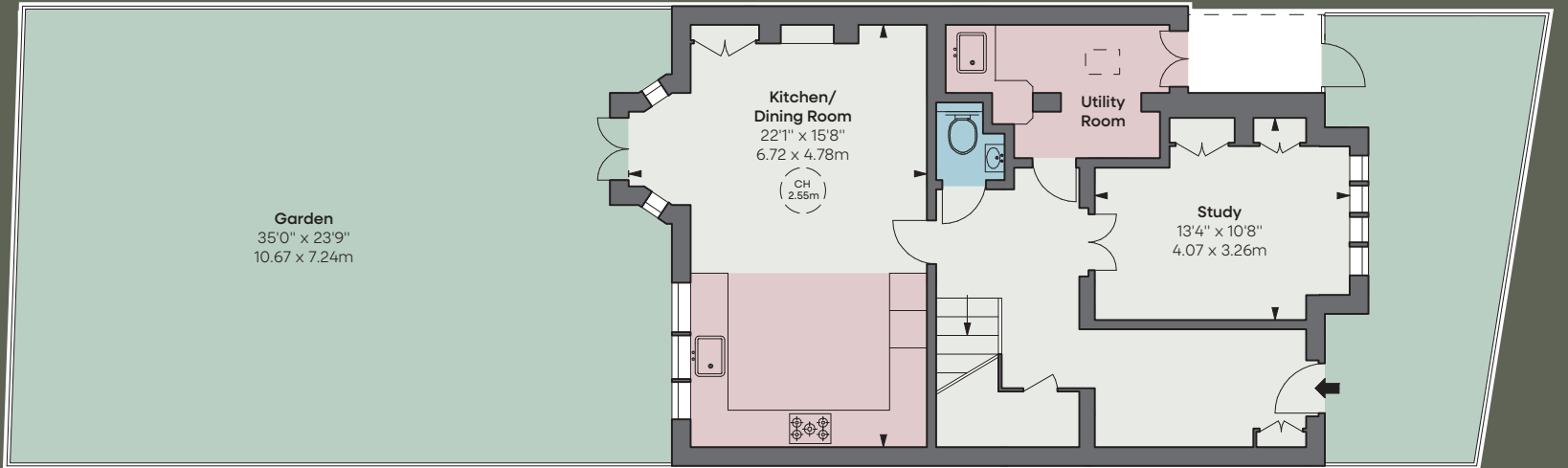
Loft



Second Floor



First Floor



Ground Floor

APPROXIMATE GROSS  
INTERNAL AREA  
2,050 sq ft  
190.45 sq m  
excluding loft

APPROXIMATE GROSS  
LOFT AREA  
190 sq ft  
17.65 sq m

TOTAL APPROXIMATE  
GROSS INTERNAL AREA  
2,240 sq ft  
208.10 sq m

THE  
BROCHURE  
ALEX  
WINSHIP

These particulars are for general information only and do not constitute any part of an offer or contract. All statements contained therein are made without responsibility on the part of the vendors or lessors and are not to be relied upon as statement or representation of fact. Intending purchasers or lessees must satisfy themselves, by inspection, or otherwise, as to the correctness of each of the statements or dimensions contained in these particulars. This floorplan is for guidance only and not for valuation purposes. 20/06/24 JLL-240425B-05-GG

Floorplan for guidance only, not to scale or for valuation purposes. It must not be relied upon as a statement of fact. All measurements and areas are approximate and have been prepared in accordance with the current edition of the RICS Code of Measuring Practice.

**JLL Knightsbridge**

174 Brompton Road, London SW3 1HP  
020 7306 1610

**JLL Chelsea**

2 Cale Street, London SW3 3QU  
020 7399 5010

[jll.co.uk/primecollection](http://jll.co.uk/primecollection)

