



## Elvaston Place, London SW7

Price £850 per week - Furnished





# Description

A charming raised ground floor flat in this well maintained building close to the facilities of South Kensington. The property consists of master bedroom with en suite shower room, second double bedroom, one bathroom, reception room and a fully fitted kitchen.

Elvaston Place is conveniently located for the many shopping and transport amenities of South Kensington and Gloucester Road and the open spaces of Hyde Park.

Rent is payable on a monthly basis and you may be required to pay more than a month's rent in advance, depending on your circumstances. You will be required to pay a 1 week holding deposit following a successful offer. Utility bills, council tax, telephone line and broadband are not included in the rent. As well as paying the rent, you may also be required to make some additional permitted payments. If your tenancy does not qualify as an AST, additional fees may apply. Please visit [jll.co.uk/fees](http://jll.co.uk/fees) for details of fees which may be payable when renting a property.

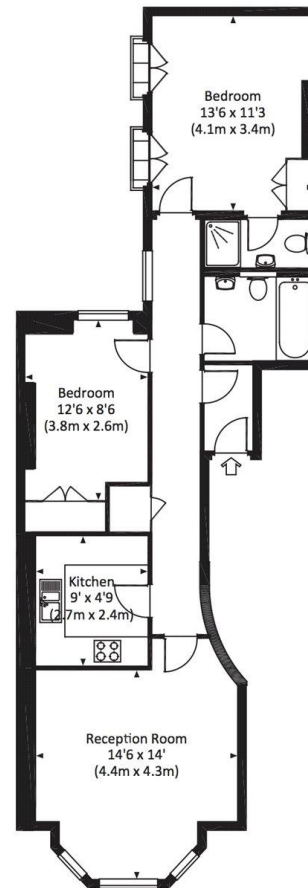
- Two Double bedrooms
- Bathroom
- Shower room (en suite)
- Reception room
- Fully fitted kitchen
- Raised ground floor
- Approx. 748 sq ft (69 sq m)
- Furnished
- EPC: E
- Council tax: Band G



# Floorplan

748 sq ft | 70 sq m

Approx. gross internal area  
748 Sq Ft. / 69.5 Sq M.



GROUND FLOOR

© 2019 Jones Lang LaSalle IP, Inc. All rights reserved. All information contained herein is from sources deemed reliable; however, no representation or warranty is made to the accuracy thereof.

**Knightsbridge**  
174 Brompton Road,  
London SW3 1HP  
+4420 7306 1600  
SalesKnightsbridge@jll.com

*Urban living, your way.*

[jll.co.uk/residential](http://jll.co.uk/residential)

© 2019 Jones Lang LaSalle IP, Inc. All rights reserved. All information contained herein is from sources deemed reliable; however, no representation or warranty is made to the accuracy thereof.

