



Kings Road, London SW3

Price £1,125 per week - Furnished





Description

A stunning second and third floor duplex apartment located in the heart of Chelsea. Many amenities of King's Road and within easy walking distance of Sloane Square underground station. The flat comprises reception room with American oak wooden floors, master bedroom with en suite shower room, second double bedroom with built in wardrobes, fully fitted kitchen and bathroom. The flat is furnished in a contemporary style and there is also use of the communal gardens for the residents of this lovely building.

Rent is payable on a monthly basis and you may be required to pay more than a month's rent in advance, depending on your circumstances. You will be required to pay a 1 week holding deposit following a successful offer. Utility bills, council tax, telephone line and broadband are not included in the rent. As well as paying the rent, you may also be required to make some additional permitted payments. If your tenancy does not qualify as an AST, additional fees may apply. Please visit jll.co.uk/fees for details of fees which may be payable when renting a property.

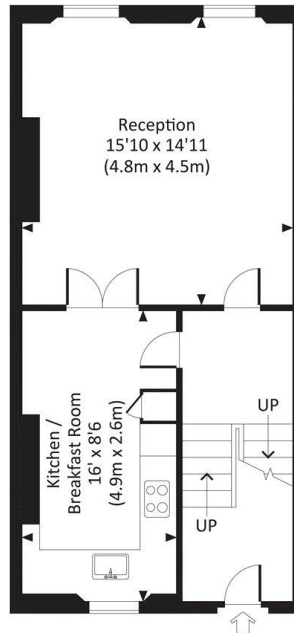
- 2 Double bedrooms
- 1 Bathroom
- 1 Shower room (en suite)
- Reception Room
- Eat-in kitchen
- Second & third floor
- Use of communal gardens
- Comfort cooling
- Approx. 1,019 sq ft (94 sq m)
- Furnished



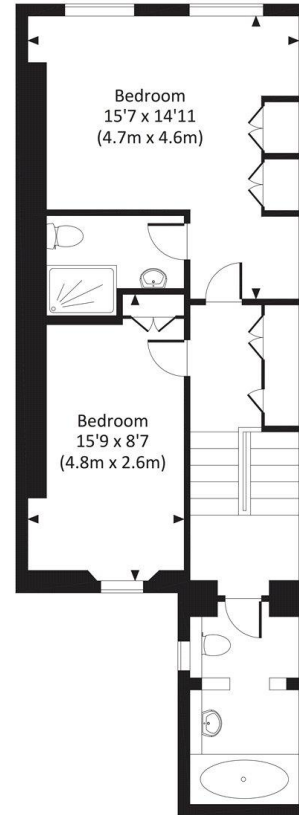
Floorplan

1,019 sq ft | 95 sq m

Approx. gross internal area
1019 Sq.Ft. / 94.7 Sq.M.



SECOND FLOOR



THIRD FLOOR

OPD All measurements have been made in accordance with BIC3 Code of Measuring Practice which are approximate only and only for illustrative purposes. For the avoidance of doubt, Dowling Jones Design shall not be liable for any reliance on these measurements. © 2016 www.dowlingjones.com 020 7510 9933

Chelsea
2 Cale Street,
London SW3 3QU
+4420 7399 5010
saleschelsea@jll.com

Urban living, your way.

jll.co.uk/residential

© 2019 Jones Lang LaSalle IP, Inc. All rights reserved. All information contained herein is from sources deemed reliable; however, no representation or warranty is made to the accuracy thereof.

