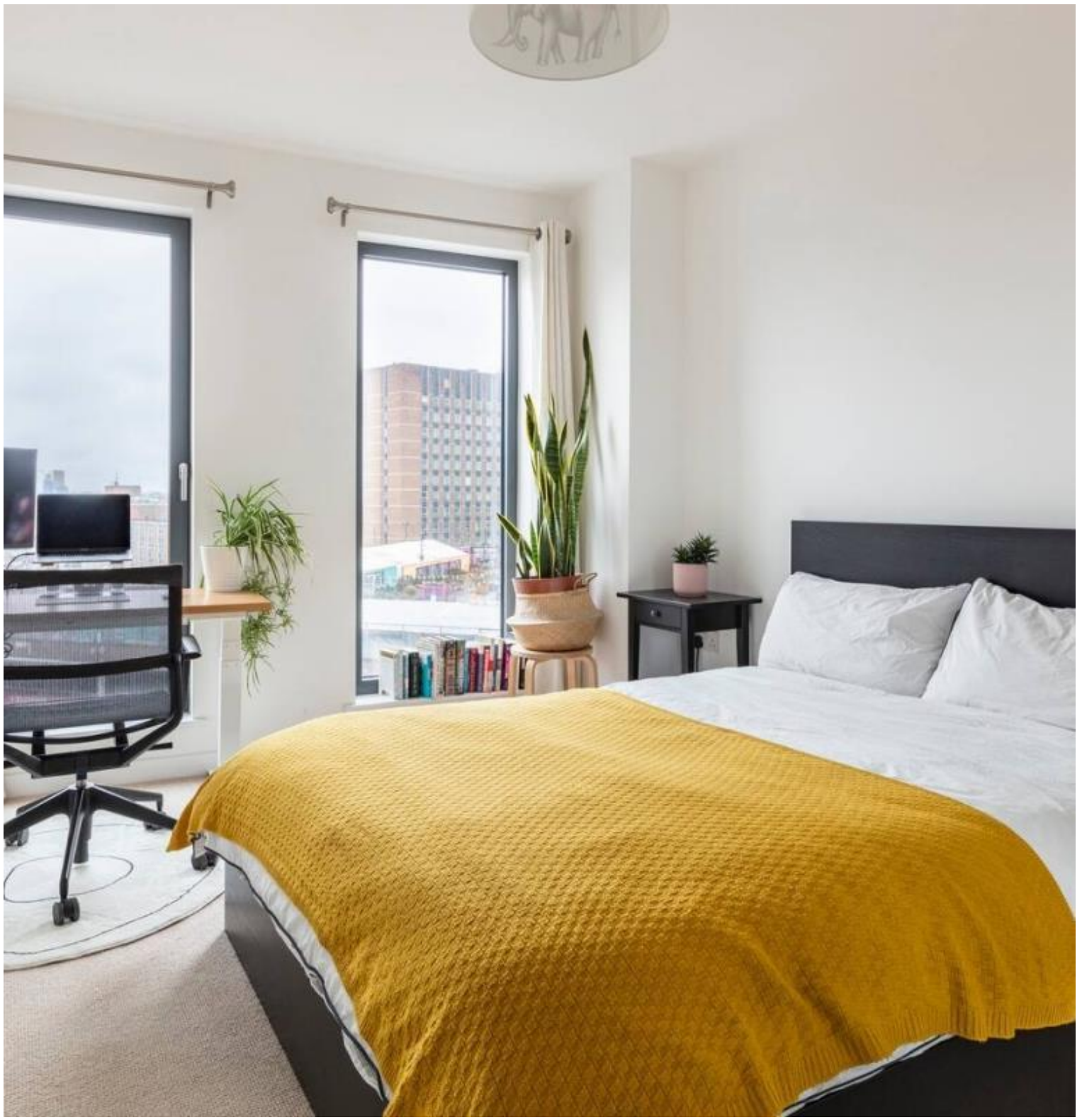




Great Eastern Road, London E15

Asking price £650,000 Leasehold







Description

Opportunity to purchase a 2 double bedroom 2 bathroom within one of Stratford's most popular developments, Legacy Tower, E15.

Situated on the 7th floor and spanning 865 square feet, the property boasts ultra modern finishes throughout comprising open-plan kitchen/living area with integrated appliances, large and covered balcony with panoramic views, two double bedrooms and two bathrooms (including an en suite to master bedroom).

Legacy Tower is a striking 31-storey tower which offers dual aspect views of both the Queen Elizabeth Olympic Park and Westfield's Stratford City. The development is located approximately 500ft from Stratford Underground Station. Residents further benefit from a concierge service, residential gymnasium, lift access and is close to local amenities.

Years remaining on lease: 244, Service charge: TBC, Ground rent: £375pa, Council tax band: D

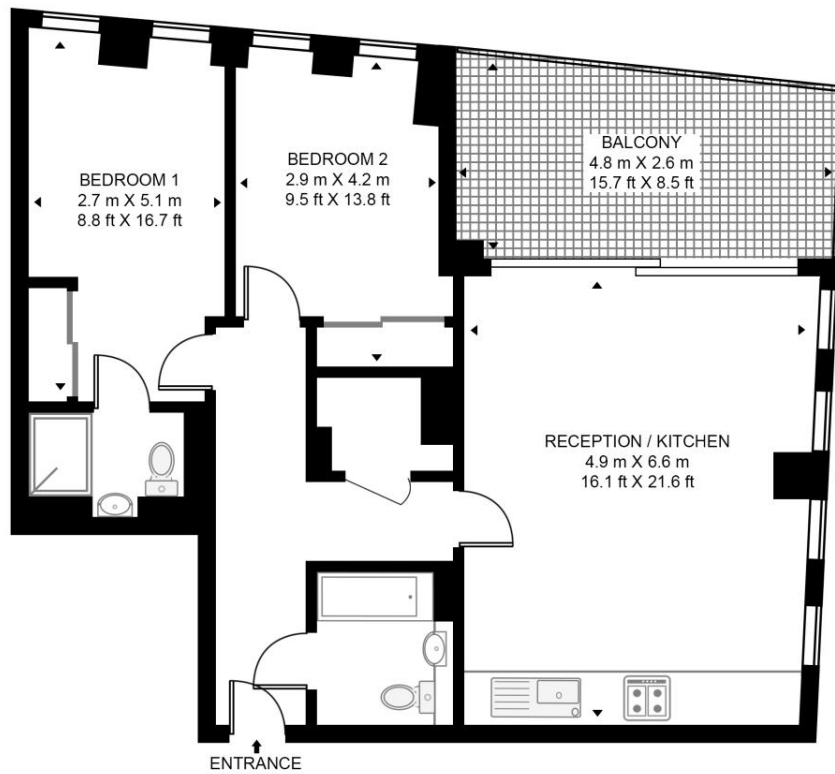
- Two double bedrooms
- Two bathrooms
- 24hr concierge
- Large balcony
- Residents' gym
- 7th floor
- Leasehold
- Approximately 865 sq. ft (80.4 sq. m)
- EPC Rating B

Floorplan

sq ft | sq m

LEGACY TOWER

APPROXIMATE GROSS INTERNAL FLOOR AREA 865 SQ.FT (80.4 SQ.M)



SEVENTH FLOOR



This floor plan has been defined by the RICS Code of Measurement. This floor plan and all others are for approximate representative purposes only and upon usage is agreed to as such by the client.
WWW: hdvirtualart.com | TEL: 0203.974.1567 | EMAIL: info@hdvirtualart.com

Stratford
5 Station Street,
London E15 1DA
+4420 3147 1500
Lettingsstratford@eu.jll.com

Urban living, your way.

jll.co.uk/residential

© 2019 Jones Lang LaSalle IP, Inc. All rights reserved. All information contained herein is from sources deemed reliable; however, no representation or warranty is made to the accuracy thereof.

