

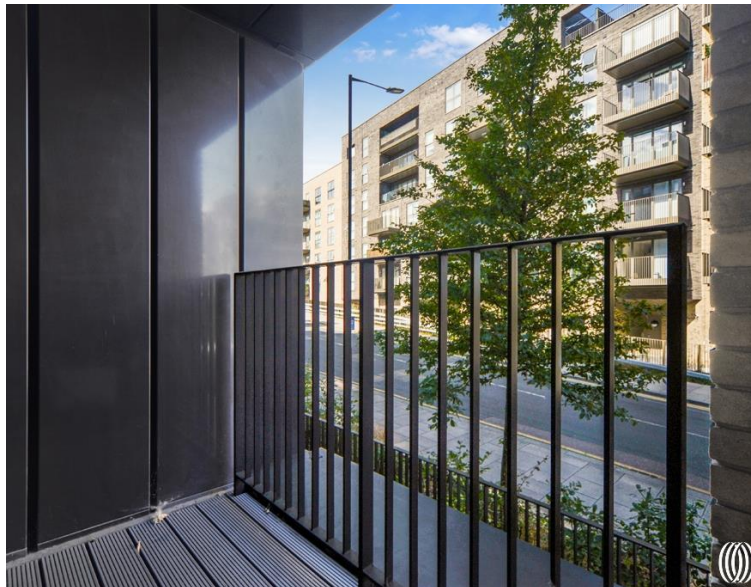


# Forrester Way, London E15

Guide price £730,000 Leasehold







## Description

An opportunity to purchase this three bedroom two bathroom apartment spanning over 1000 sq. ft equipped with an underground parking space within New Garden Quarter E15, boasting a beautifully 2 acre landscaped garden square, private green spaces, concierge and residents gym.

Apartments finished to a high specification. Open plan living room and kitchen, high specification kitchen include handle-less fitted units, engineered stone worktops, glass splash backs and fully integrated appliances. Bathrooms and en suite shower rooms offer bespoke cabinetry and ceramic tiling. Fitted wardrobes to master bedroom and under floor heating throughout. Arranged around a beautifully landscaped 2 acre garden square, New Garden Quarter benefits from facilities that include a 24 hour concierge, residents' gymnasium and nursery, as well as the extensive facilities available in fast-growing Stratford itself. Each home is built to the highest standard, creating a unique development in one of London's most talked-about districts. Located next to Queen Elizabeth Park for Westfield and access to Stratford Underground station for easy access to Liverpool Street, Canary Wharf and Bank. One allocated parking space included.

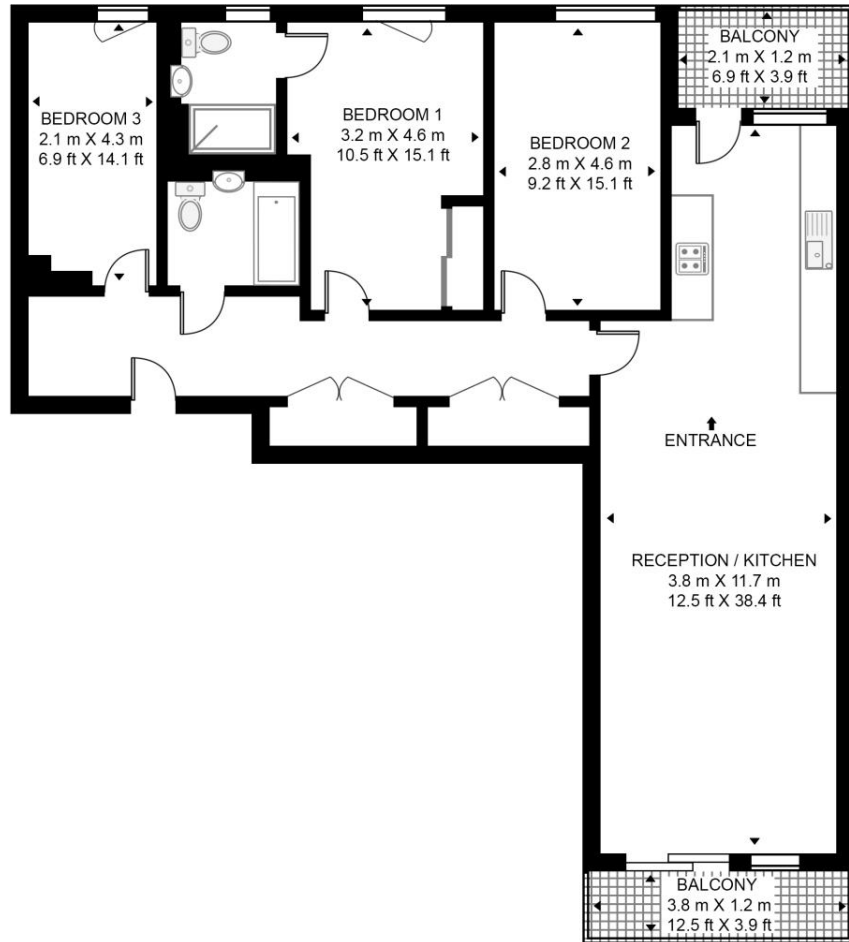
- Three bedrooms
- Two bathrooms (one en-suite)
- Two balconies
- 24h concierge service
- Residents' gym
- Approx. 1103 sq. ft (102.5 sq. m)
- Leasehold
- 0.4 miles from Stratford underground station
- EPC Rating B

# Floorplan

1,038 sq ft | 96 sq m

## WATERMAN HOUSE

APPROXIMATE GROSS INTERNAL FLOOR AREA 1103 SQ.FT (102.5 SQ.M)



## SECOND FLOOR



This floor plan has been defined by the RICS Code of Measurement. This floor plan and all others are for approximate representative purposes only and upon usage is agreed to as such by the client.

WWW: [hdvirtualart.com](http://hdvirtualart.com) | TEL: 0203.974.1567 | EMAIL: [info@hdvirtualart.com](mailto:info@hdvirtualart.com)

Stratford  
5 Station Street,  
London E15 1DA  
+4420 3147 1500  
[Lettingsstratford@eu.jll.com](mailto:Lettingsstratford@eu.jll.com)

*Urban living, your way.*

[jll.co.uk/residential](http://jll.co.uk/residential)

© 2019 Jones Lang LaSalle IP, Inc. All rights reserved. All information contained herein is from sources deemed reliable; however, no representation or warranty is made to the accuracy thereof.

