



Bessemer Place, Greenwich, London SE10 0GP



## Bessemer Place, Greenwich, London, SE10

Leasehold (230 years remaining)

***This beautifully presented apartment on the 11th floor with Thames views, located in the popular Platinum Riverside development with parking, concierge and gym facilities.***

### Key Features

- 2 Double bedrooms
- 2 Bathrooms
- 2 Balconies
- Close to transport links
- Allocated parking space
- Council Tax: C
- Service Charge: £3,867.96 p/a
- Ground Rent: £350 p/a
- Same level as the gym
- EPC: B

The accommodation comprises of a spacious large entrance hall with built in storage cupboard, open plan kitchen / dining / reception room with access onto two private balconies offering streams of natural light and boasting fantastic far reaching views. Two double bedrooms, both with access onto the same balcony and master with built in wardrobes and ensuite shower room. The property is finished off with a contemporary family bathroom.

Greenwich Peninsula itself has become a sought-after location thanks to its proximity to the river and its many leisure and entertainment options. The area features a wealth of attractions, such as the O2 Arena, which hosts large concerts and events, as well as various restaurants, bars, and shops. Greenwich Park, with its stunning views of London and historic landmarks such as the Royal Observatory, is also nearby.

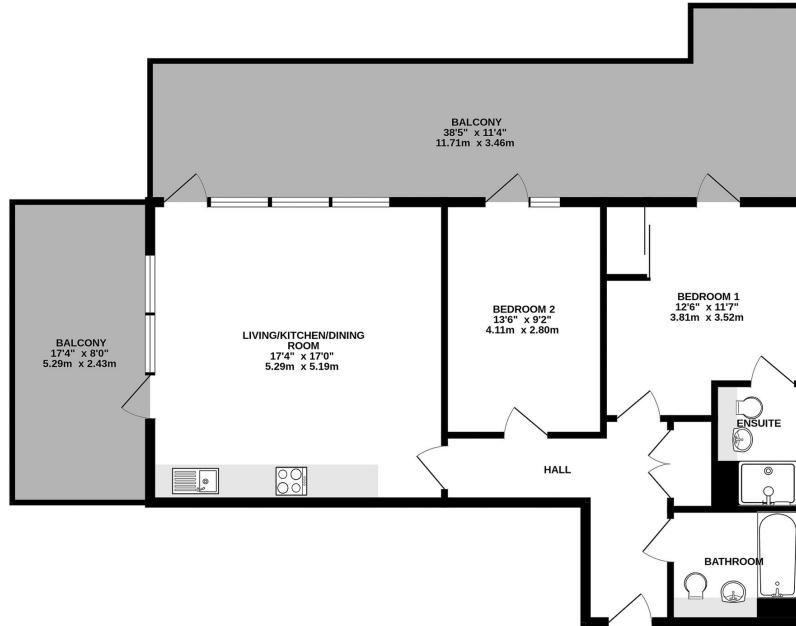








11TH FLOOR  
774 sq.ft. (71.9 sq.m.) approx.



TOTAL FLOOR AREA: 774 sq.ft. (71.9 sq.m.) approx.

Whilst every attempt has been made to ensure the accuracy of the floorplan contained here, measurements of doors, windows, rooms and any other items are approximate and no responsibility is taken for any error, omission or mis-statement. This plan is for illustrative purposes only and should be used as such by any prospective purchaser. The services, systems and appliances shown have not been tested and no guarantee as to their operability or efficiency can be given.

22 College Approach, Greenwich, London, SE10 9HY

Sales, Lettings & Property Management

Tel: 020 8858 9986

[residential.jll.co.uk](http://residential.jll.co.uk)

