



## Kings Road, London SW3

Price £795 per week - Furnished, Unfurnished





# Description

A wonderful mews house in this well maintained development ideally located for the many amenities of the King's Road and within easy walking distance of Sloane Square underground station. The house comprises reception room with American oak wooden floors, double bedroom with built in wardrobes, fully fitted, open plan kitchen and bathroom with power shower.

Rent is payable on a monthly basis and you may be required to pay more than a month's rent in advance, depending on your circumstances. You will be required to pay a 1 week holding deposit following a successful offer. Utility bills, council tax, telephone line and broadband are not included in the rent. As well as paying the rent, you may also be required to make some additional permitted payments. If your tenancy does not qualify as an AST, additional fees may apply. Please visit [jll.co.uk/fees](http://jll.co.uk/fees) for details of fees which may be payable when renting a property.

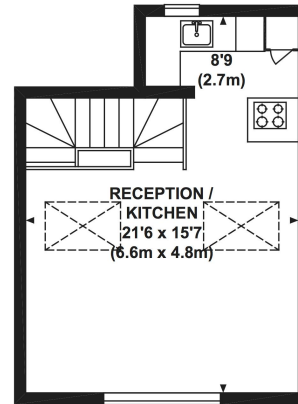
- 1 Double bedroom
- 1 Bathroom
- Reception Room
- Open plan kitchen
- Use of communal gardens
- Approx. 621 sq ft (57 sq m)
- Furnished/Unfurnished/partly furnished
- EPC: E
- Council tax: Band E
- Deposit: £3975



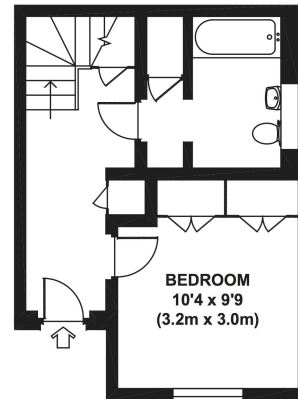
# Floorplan

621 sq ft | 58 sq m

Approx. gross internal area  
612 Sq Ft. / 56.9 Sq M.



FIRST FLOOR



GROUND FLOOR



All measurements are approximate and for illustration purposes only as defined by the RICS Code of Measuring Practice © 2013 Dawling Jones Design www.dawlingjones.com 020 7610 9933

Chelsea  
2 Cale Street,  
London SW3 3QU  
+4420 7399 5010  
saleschelsea@jll.com

*Urban living, your way.*

[jll.co.uk/residential](http://jll.co.uk/residential)

© 2019 Jones Lang LaSalle IP, Inc. All rights reserved. All information contained herein is from sources deemed reliable; however, no representation or warranty is made to the accuracy thereof.

