



## Chesham Place, London SW1X

Price £515 per week - Furnished, Unfurnished







## Description

A well presented lower ground floor apartment, situated in a popular period building in Chesham Place. The apartment comprises one double bedroom, one bathroom, reception room and a separate modern kitchen. Chesham Place is situated in the heart of Belgravia, and benefits from being within walking distance of both Knightsbridge and Victoria station, for transport links across and out of central London.

Rent is payable on a monthly basis and you may be required to pay more than a month's rent in advance, depending on your circumstances. You will be required to pay a 1 week holding deposit following a successful offer. Utility bills, council tax, telephone line and broadband are not included in the rent. As well as paying the rent, you may also be required to make some additional permitted payments. If your tenancy does not qualify as an AST, additional fees may apply. Please visit [jll.co.uk/fees](http://jll.co.uk/fees) for details of fees which may be payable when renting a property.

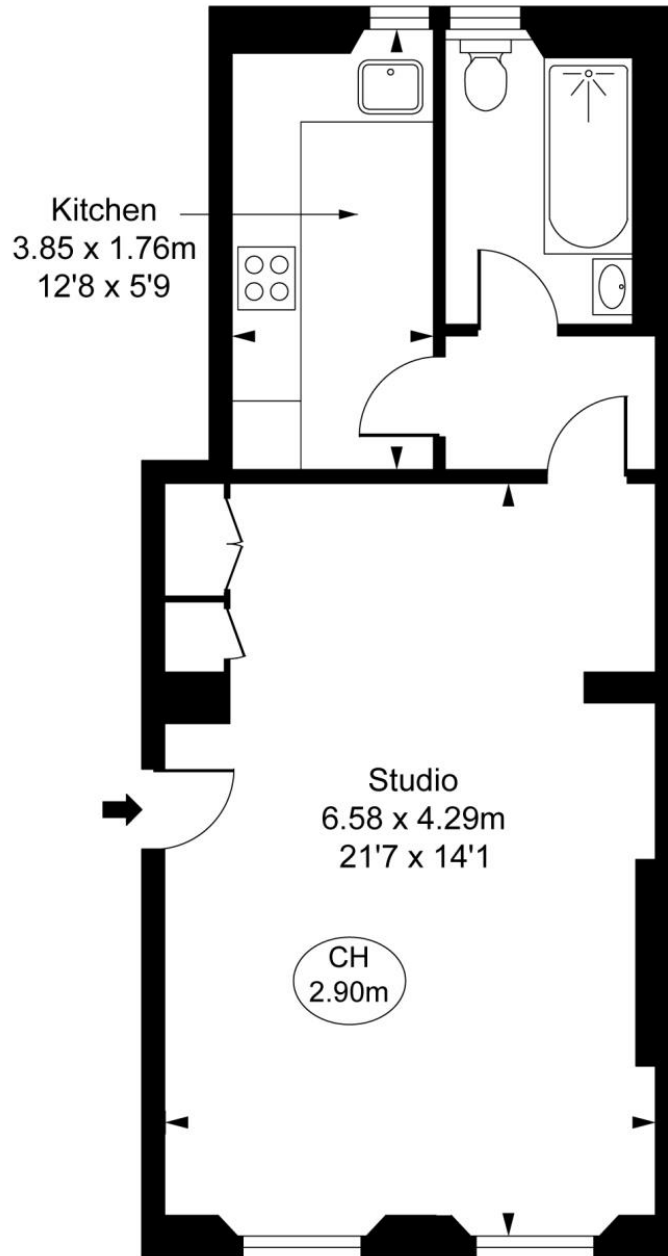
- One double bedroom
- One bathroom
- Reception room
- Modern kitchen
- Lower ground floor
- Unfurnished
- Approx. 416 sq ft (38 sq m)
- EPC: C
- Council tax: Band E
- Deposit: £2575

# Floorplan

416 sq ft | 39 sq m

## Chesham Place, SW1X

Approximate Gross Internal Area  
41.56 sq m / 447 sq ft  
( CH = Ceiling Heights )



Lower Ground Floor

This plan is not to scale. It is for guidance and not for valuation purposes.  
All measurements and areas are approximate only, and have been prepared in accordance with the current edition of the RICS Code of Measuring Practice.  
© Fulham Performance

Knightsbridge  
174 Brompton Road,  
London SW3 1HP  
+4420 7306 1600  
SalesKnightsbridge@jll.com

*Urban living, your way.*

[jll.co.uk/residential](http://jll.co.uk/residential)

© 2019 Jones Lang LaSalle IP, Inc. All rights reserved. All information contained herein is from sources deemed reliable; however, no representation or warranty is made to the accuracy thereof.

