



Scarlet Close, London E20

Asking price £590,000 Leasehold







Description

Proud to introduce this stunning two-bedroom apartment with a balcony, located in the highly sought-after East Village.

This well-designed (745 sq. ft) apartment features two bedrooms, one bathroom, providing ample space for relaxation and rejuvenation. The property also includes a stylishly appointed family bathroom, ensuring comfort and convenience. As you enter the apartment, you are welcomed by an inviting entrance hall with a storage/utility cupboard, allowing for organized and clutter-free living. The modern and integrated kitchen, equipped with appliances and ample worktop space to prepare meals.

The highlight of this exceptional property is the reception room with room to dine, seamlessly flowing onto a private balcony. Convenience is key with this apartment, as the renowned Queen Elizabeth Park is just a stone's throw away. For shopping enthusiasts, the prestigious Westfield shopping centre is within close proximity. Excellent connectivity is provided by the nearby Stratford International station and underground, granting easy access to the rest of the city.

East Village itself offers a vibrant dining and social scene, boasting an array of independent bars, restaurants, and cafes.

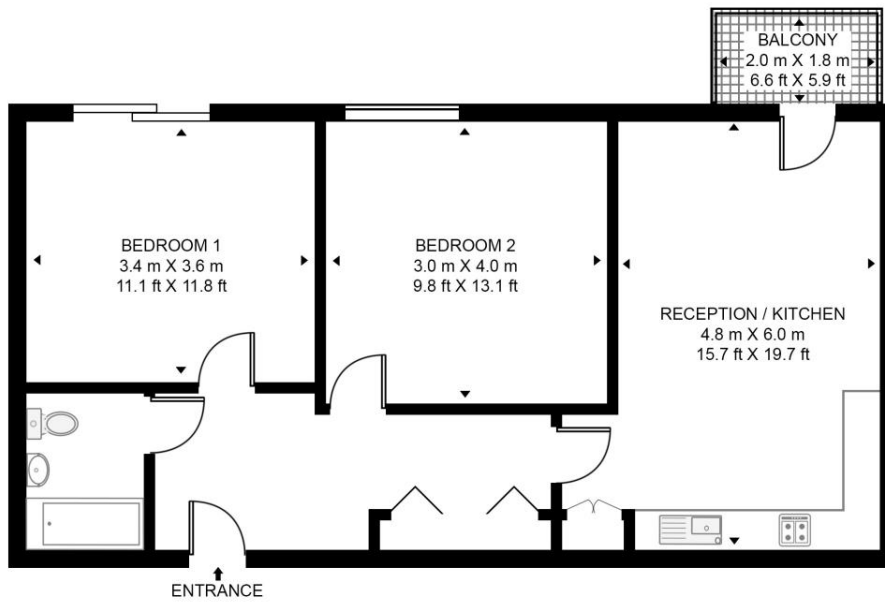
- Two bedrooms
- One bathroom
- Balcony
- 2nd Floor
- Approx. 745 sq. ft (69.2 sq. m)
- Communal courtyard
- Underground parking available at additional cost
- Secure development
- EPC Rating B

Floorplan

745 sq ft | 69 sq m

TITIAN HEIGHTS 12 SCARLET CLOSE

APPROXIMATE GROSS INTERNAL FLOOR AREA 745 SQ.FT (69.2 SQ.M)



SECOND FLOOR



This floor plan has been defined by the RICS Code of Measurement. This floor plan and all others are for approximate representative purposes only and upon usage is agreed to as such by the client.

WWW: hdvirtualart.com | TEL: 0203.974.1567 | EMAIL: info@hdvirtualart.com

Stratford
5 Station Street,
London E15 1DA
+4420 3147 1500
Lettingsstratford@eu.jll.com

Urban living, your way.

jll.co.uk/residential

© 2019 Jones Lang LaSalle IP, Inc. All rights reserved. All information contained herein is from sources deemed reliable; however, no representation or warranty is made to the accuracy thereof.

