



## St Joseph Street, London SW8

Price £750 per week - Furnished





# Description

A modern and spacious two bedroom luxury apartment located close to Battersea Park, two overground stations and Battersea Power Station tube offering quick access in and out of central London.

This beautifully presented apartment comprises of open plan kitchen reception room, two double bedrooms both with fitted wardrobes, a large modern bathroom, useful hallway storage and winter garden.

Residents benefit from 24 hr. concierge and a gymnasium.

Nearby transport links include Battersea Park and Queenstown Road overground stations and Battersea Power Station tube, offering direct access in and out of central London.

The cafes, restaurants and amenities around the park and Nine Elms are also within easy reach.

We understand that cooling / heating is delivered via a communal system for which separate charges apply.

Rent is payable on a monthly basis and you may be required to pay more than a month's rent in advance, depending on your circumstances. You will be required to pay a 1 week holding deposit following a successful offer. Utility bills, council tax, telephone line and broadband are not included in the rent. As well as paying the rent, you may also be required to make some additional permitted payments. If your tenancy does not qualify as an AST, additional fees may apply. Please visit [jll.co.uk/fees](http://jll.co.uk/fees) for details of fees which may be payable when renting a property.

- 2 Bedrooms
- 1 Bathroom
- Battersea Park
- Winter garden
- 24 hr. concierge
- Residents gym
- 884 sq ft (82.1 sq m)
- Furnished
- EPC: B
- Council tax: Band E

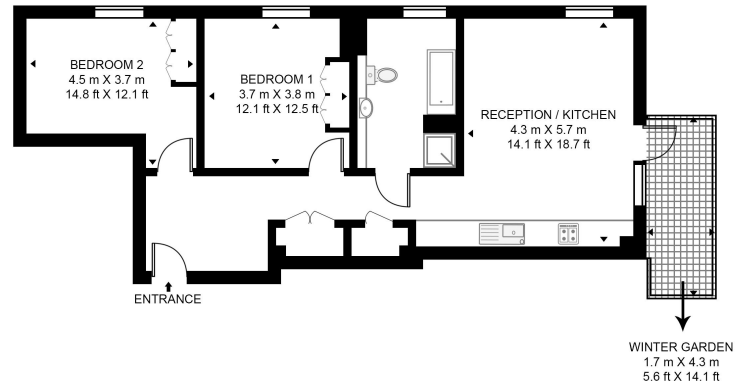


# Floorplan

884 sq ft | 82 sq m

## BROGAN HOUSE, BATTERSEA EXCHANGE

APPROXIMATE GROSS INTERNAL FLOOR AREA 884 SQ.FT (82.1 SQ.M)  
(INCLUDING WINTER GARDEN 962 SQ.FT (89.4 SQ.M))



This floor plan has been defined by the RICS Code of Measurement. This floor plan and all others are for approximate representative purposes only and upon usage is agreed to as such by the client.  
WWW: [hdvirtualart.com](http://hdvirtualart.com) | TEL: 0203 974 1567 | EMAIL: [info@hdvirtualart.com](mailto:info@hdvirtualart.com)

Nine Elms  
4 Riverlight Quay,  
London SW11 8DG  
+4420 3147 1333  
[lettingsnineelms@eu.jll.com](mailto:lettingsnineelms@eu.jll.com)

*Urban living, your way.*

[jll.co.uk/residential](http://jll.co.uk/residential)

© 2019 Jones Lang LaSalle IP, Inc. All rights reserved. All information contained herein is from sources deemed reliable; however, no representation or warranty is made to the accuracy thereof.

