



## Tapestry Way, London E1

Price £595 per week - Furnished









## Description

A stunning 1 bedroom apartment situated on the 14th floor of Jacquard Point, part of the Silk District development in Whitechapel's regeneration area, E1.

This contemporary apartment is offered furnished with a southerly aspect. The apartment comprises an open plan living room with large south facing balcony, integrated kitchen, double bedroom with large fitted wardrobes, bathroom with porcelain finish, tiled flooring throughout and good storage space.

The Silk District is a development from Mount Anvil and offers its residents fantastic amenities which include 24 hour concierge, on site gym, cinema room, rooftop gardens and resident's lounge. The development is within easy reach of the City of London and in the heart of the Whitechapel regeneration area, approximately 0.3 miles from Whitechapel Underground / Crossrail station.

We understand that cooling / heating is delivered via a communal system for which separate charges apply.

Rent is payable on a monthly basis and you may be required to pay more than a month's rent in advance, depending on your ci

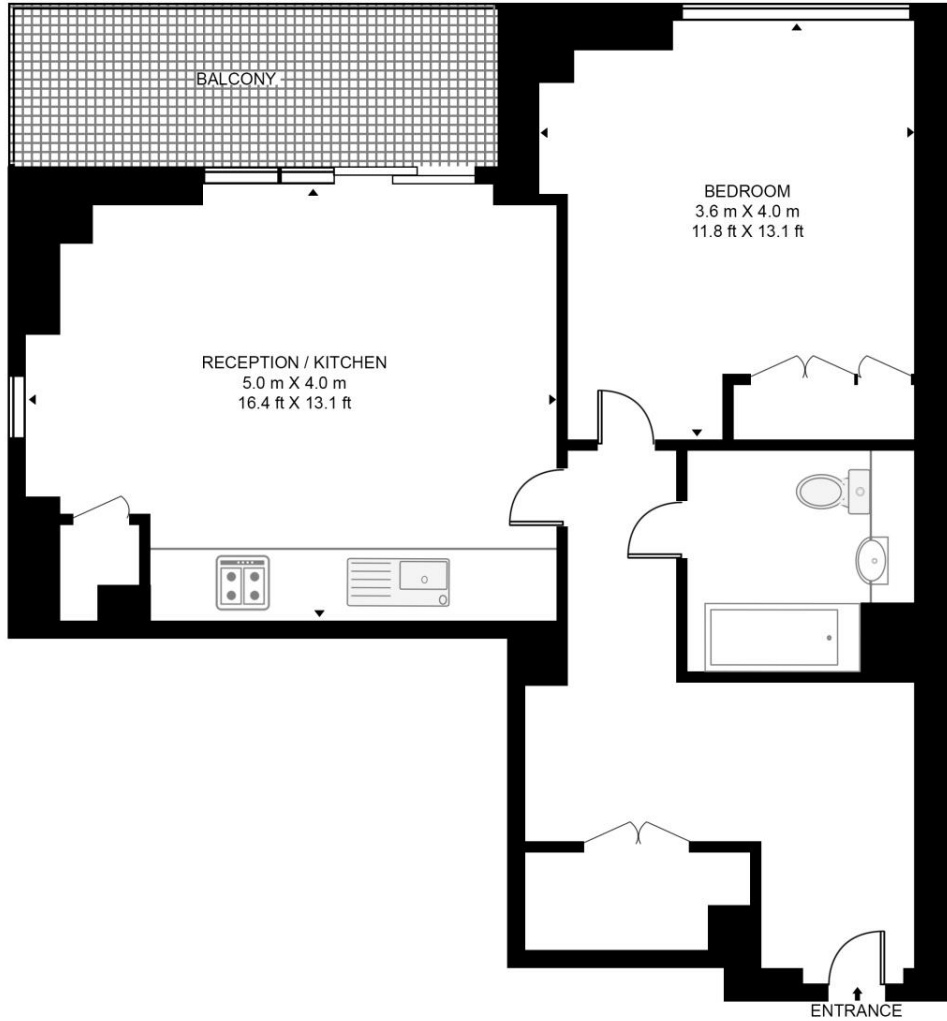
- 1 Bedroom
- 1 Bathroom
- 14th Floor
- Large south facing balcony
- Bathroom with porcelain
- Rooftop gardens
- 24 hour concierge
- On-site leisure facilities including cinema and gym
- 0.3 miles from Whitechapel Station
- Approx. 554 (51.4 sq m)

# Floorplan

554 sq ft | 52 sq m

## JACQUARD POINT, THE SILK DISTRICT

APPROXIMATE GROSS INTERNAL FLOOR AREA 554 SQ.FT (51.5 SQ.M)



FOURTEENTH FLOOR



This floor plan has been defined by the RICS Code of Measurement. This floor plan and all others are for approximate representative purposes only and upon usage is agreed to as such by the client.  
WWW: [hdvirtualart.com](http://hdvirtualart.com) | TEL: 0203.974.1567 | EMAIL: [info@hdvirtualart.com](mailto:info@hdvirtualart.com)

City  
25 Walbrook The Walbrook  
Building,  
London EC4N 8AF  
+4420 7337 4000

*Urban living, your way.*

[jll.co.uk/residential](http://jll.co.uk/residential)

© 2019 Jones Lang LaSalle IP, Inc. All rights reserved. All information contained herein is from sources deemed reliable; however, no representation or warranty is made to the accuracy thereof.

