



## Carnation Way, London SW8

Price £1,200 per week - Furnished,  
Unfurnished







## Description

Thames City is a new landmark on London's skyline and a new standard in luxury living. Tenants will have the use of exceptional amenities and services at their fingertips, in beautifully designed apartments with spectacular views over the city.

This contemporary apartment has been thoughtfully designed to maximise the use of space and offers unrivalled views. It is spacious and bright, with floor to ceiling windows flooded with light. The kitchen and bathrooms have been finished to the highest standards and the style is refined throughout making the apartment a welcome retreat at the end of the day.

Multiple amenity spaces have been designed to calm and inspire include an elegant lobby with a 24-hour concierge, a wellness centre that includes a 30 meter swimming pool, spa, sauna, treatment rooms, a fully-equipped gym, a private cinema room, a library, wine and cigar bar, private dining, lounge area, library, a sky lounge, karaoke room and kids club.

Located close to the River Thames and a few minutes from Nine Elms Underground station and Vauxhall transport hub means getting around the city couldn't be simpler. The Thames Clipper service is also nearby.

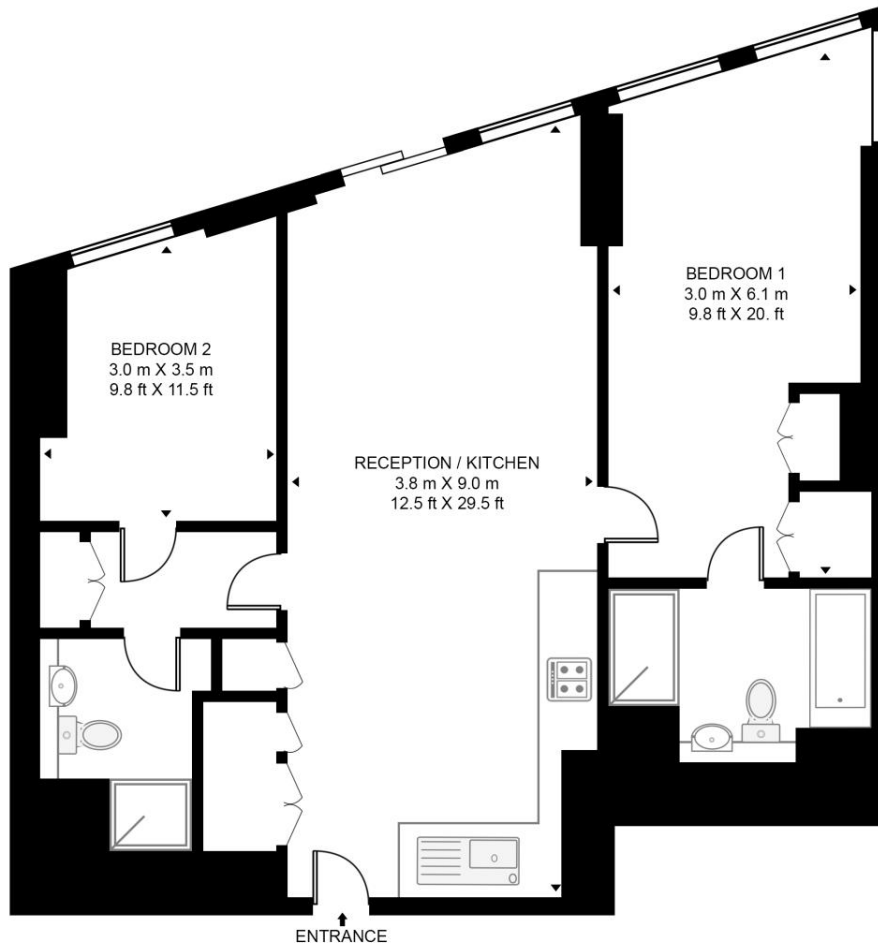
- 2 Bedrooms
- 2 Bathrooms
- Gym & Wellness centre
- 30 metre swimming pool
- Private cinema
- 24-hour concierge
- Luxury Amenities
- Furnished
- 957 sq ft (88.9 sq m)
- EPC: B

# Floorplan

957 sq ft | 89 sq m

## ONE THAMES CITY, 8 CARNATION WAY

APPROXIMATE GROSS INTERNAL FLOOR AREA 957 SQ.FT (88.9 SQ.M)



THIRTY FIRST FLOOR



This floor plan has been defined by the RICS Code of Measurement. This floor plan and all others are for approximate representative purposes only and upon usage is agreed to as such by the client.  
WWW: [hdvirtualart.com](http://hdvirtualart.com) | TEL: 0203.974.1567 | EMAIL: [info@hdvirtualart.com](mailto:info@hdvirtualart.com)

Nine Elms  
4 Riverlight Quay,  
London SW11 8DG  
+4420 3147 1333  
[lettingsnineelms@eu.jll.com](mailto:lettingsnineelms@eu.jll.com)

*Urban living, your way.*

[jll.co.uk/residential](http://jll.co.uk/residential)

© 2019 Jones Lang LaSalle IP, Inc. All rights reserved. All information contained herein is from sources deemed reliable; however, no representation or warranty is made to the accuracy thereof.

