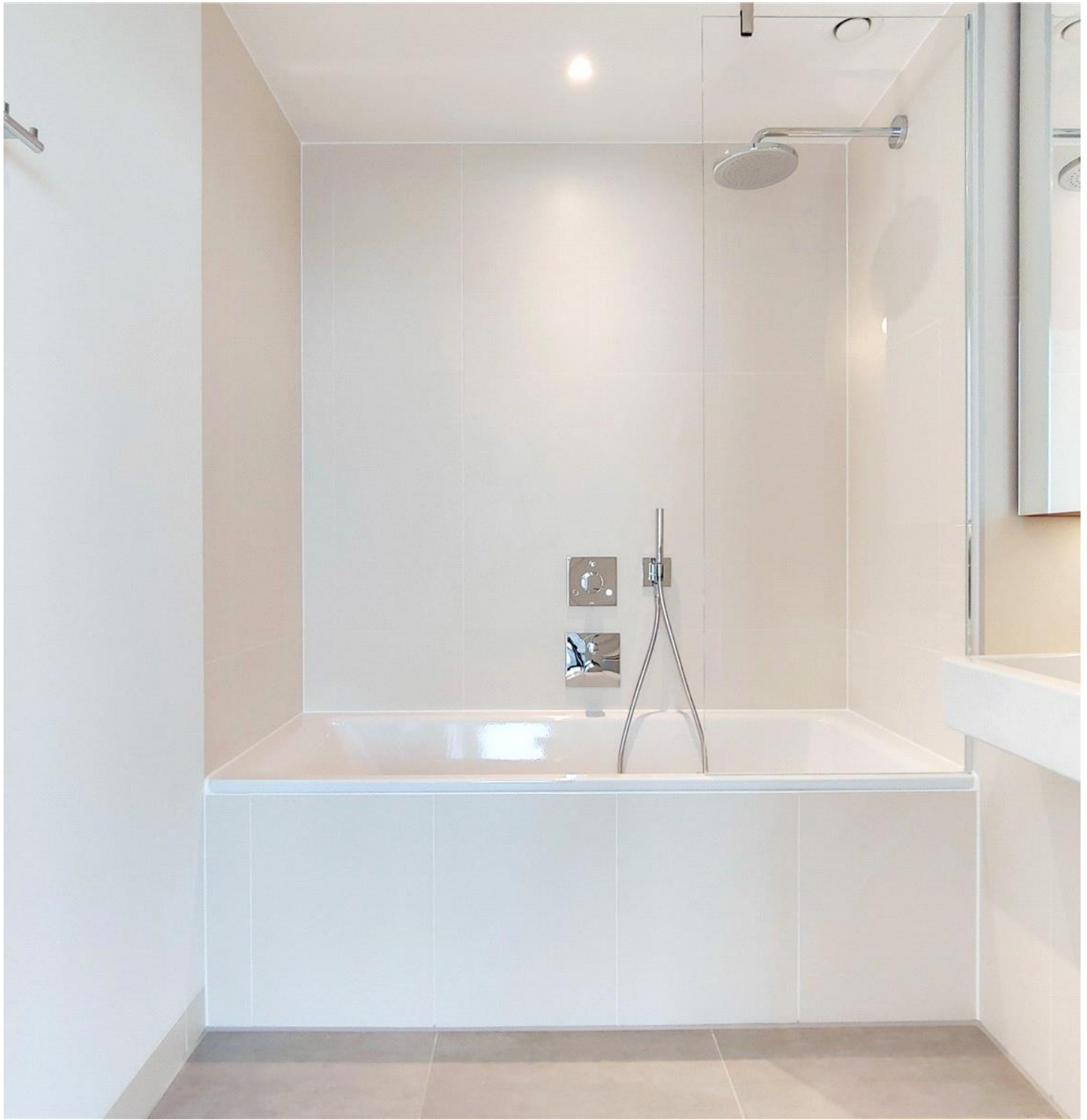
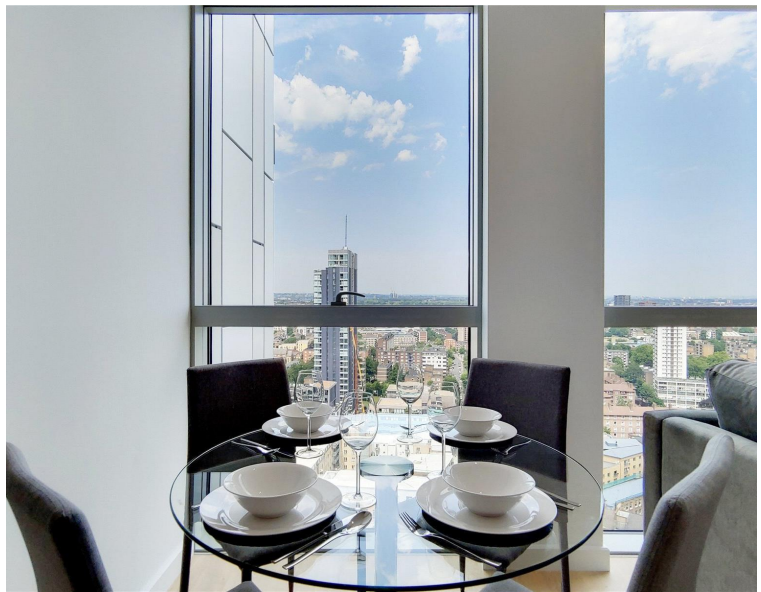
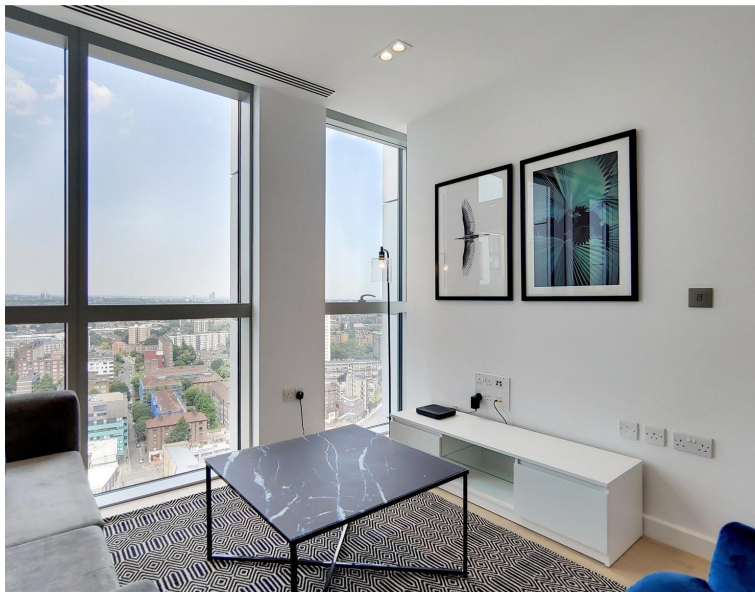
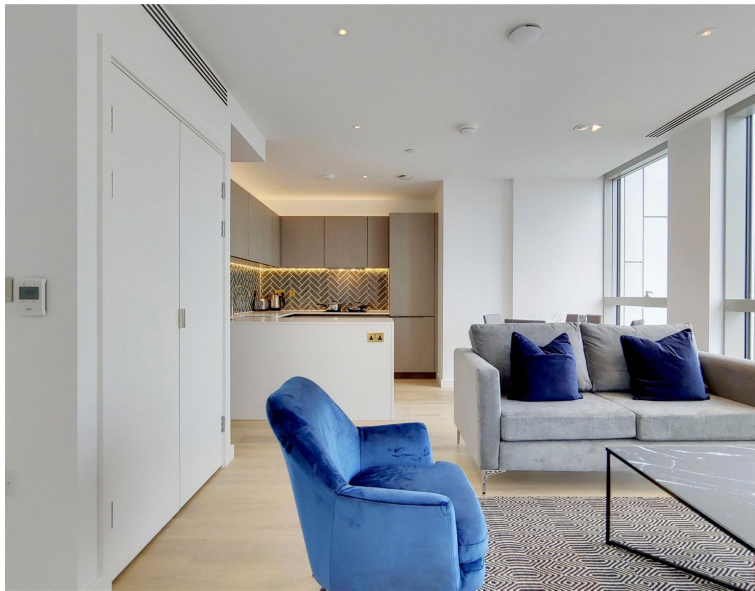


**City Road, London EC1V**

Price £765 per week - Furnished







## Description

A spectacular 1 bedroom apartment in the Atlas Building, situated next to Old Street. EC1

Situated on the 20th floor, this spacious 1 bedroom apartment is furnished to a high standard and offers approximately 545 sq. ft. of living space. The apartment comprises a large open plan reception with fully fitted kitchen, large East facing balcony with stunning views towards the City and towards Canary Wharf and Stratford Olympic Park, bedroom with large fitted wardrobe, luxury bathroom with Porcelain finish and solid wood flooring.

The Atlas Building is next to Old Street station (0.1 mile) and ideally situated for the City, Hoxton, Shoreditch and Angel. The development offers top of the range amenities which includes pool, spa, gymnasium, private cinema room, resident's only business lounge and 24 hour concierge.

We understand that cooling / heating is delivered via a communal system for which separate charges apply.

Rent is payable on a monthly basis and you may be required to pay more than a month's rent in advance, depending on your circumstances. You will be required to pay a 1 week holding de

- 1 Bedroom
- 1 Bathroom
- Private balcony
- On-site leisure facilities including pool, spa and cinema
- 24 hour concierge
- 0.1 miles from Old Street Station
- Approx. 545.2 sq ft (50.6 sq m)
- Furnished
- EPC: B
- Council tax: Band E

# Floorplan

545 sq ft | 51 sq m

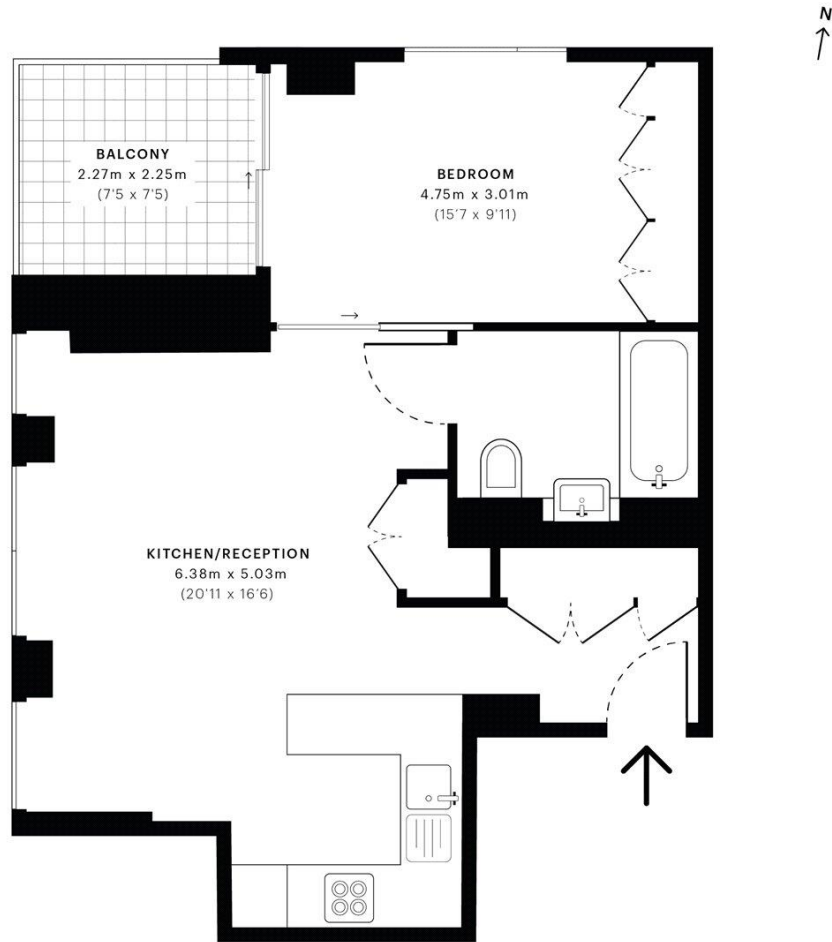


City Road, EC1V

CAPTURE DATE  
25/07/2019

LASER SCAN POINTS  
21,205,970

GROSS INTERNAL AREA  
50.6 Sqm / 545.2 Sqft



GROSS INTERNAL AREA  
The footprint of the property  
50.6 Sqm / 545.2 Sqft

NET AREA (INTERNAL)  
Excludes walls and external features  
48.2 Sqm / 518.6 Sqft

EXTERNAL STRUCTURAL FEATURES  
Balconies, terraces, verandas etc.  
5.1 Sqm / 55.0 Sqft

RESTRICTED HEAD HEIGHT  
Limited use area under 1.5m  
0.0 Sqm / 0.0 Sqft



Spec floor plans are produced in accordance with the Royal Institution of Chartered Surveyors' Property Measurement Standards. Plots and gardens are illustrative only and are excluded from all area calculations. Due to rounding, numbers may not add up precisely.



IPMS 3B RESIDENTIAL  
55.8 Sqm / 600.1 Sqft

IPMS 3C RESIDENTIAL  
53.3 Sqm / 573.6 Sqft

SPEC ID  
5d35c67e77d39b0a0c0829c5

City  
25 Walbrook The Walbrook  
Building,  
London EC4N 8AF  
+4420 7337 4000

*Urban living, your way.*

[jll.co.uk/residential](http://jll.co.uk/residential)

© 2019 Jones Lang LaSalle IP, Inc. All rights reserved. All information contained herein is from sources deemed reliable; however, no representation or warranty is made to the accuracy thereof.

