



## Fountain Park Way, London W12

Guide price £1,120,000 Leasehold







# Description

A brand new luxurious two-bedroom apartment to let with private balcony in the award-winning White City Living development. Arranged over the tenth floor, property comprises two double bedrooms (one en-suite), second bathroom, large open plan kitchen and living room leading to a private balcony with fantastic views. White city living is a beautiful development set in tranquil communal landscaped gardens and is located next to Westfield and Wood Lane tube station. Other benefits include 24-hour concierge, resident only facilities including gym, spa, cinema, and swimming pool. This property is offered on a furnished basis, is ready for immediate occupancy and is professionally managed for tenant's peace of mind.

- 2 Bedrooms
- 2 Bathrooms
- Private balcony
- 24 Hour concierge
- Gym, swimming pool, cinema
- Approx 812 sq ft (74 sq m)
- Furnished
- EPC: B

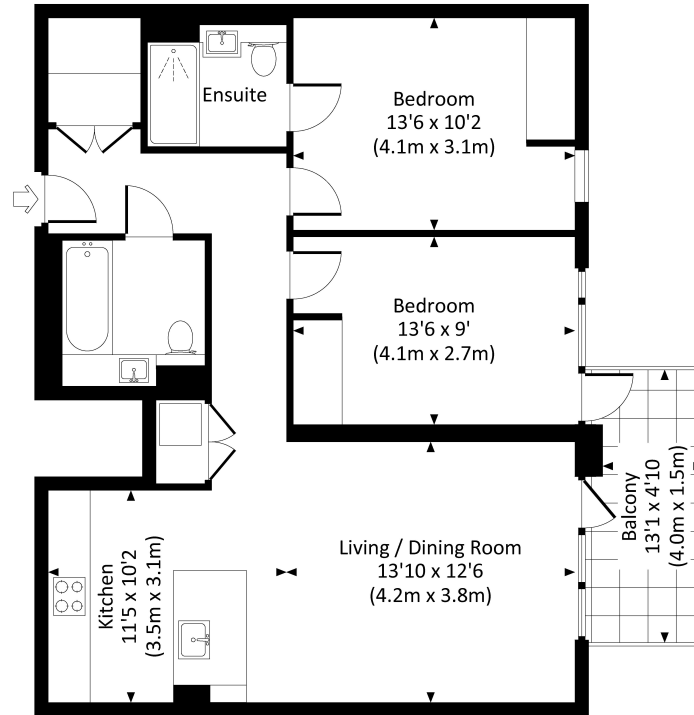


# Floorplan

812 sq ft | 75 sq m

BELVEDERE ROW, W12

Approx. gross internal area  
812 Sq Ft. / 75.4 Sq M.



TENTH FLOOR

All measurements are approximate and for guidance and illustrative purposes only.  
Photography and Floor Plans by [www.rayco.london](http://www.rayco.london) - +44 7793 974 209

Kensington  
387 Kensington High Street,  
London W14 8QA  
+4420 7087 5696  
[lettingskensington@eu.jll.com](mailto:lettingskensington@eu.jll.com)

*Urban living, your way.*

[jll.co.uk/residential](http://jll.co.uk/residential)

© 2019 Jones Lang LaSalle IP, Inc. All rights reserved. All information contained herein is from sources deemed reliable; however, no representation or warranty is made to the accuracy thereof.

