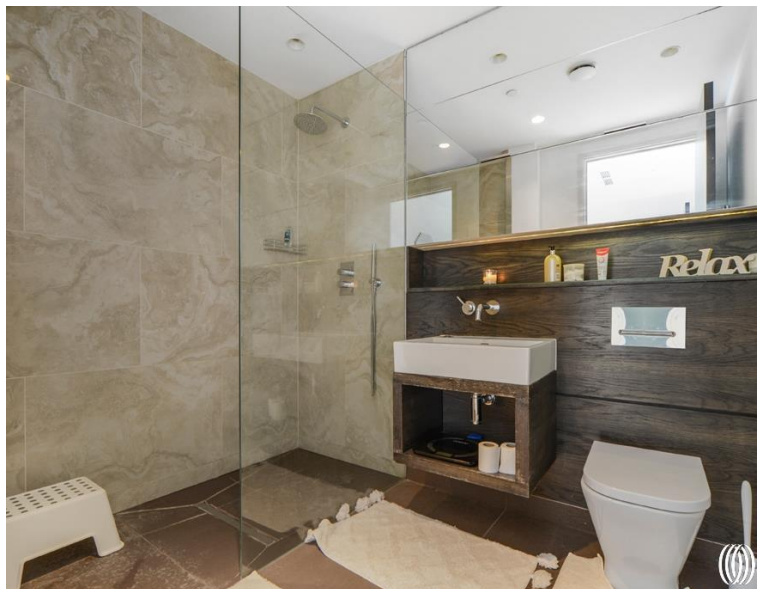
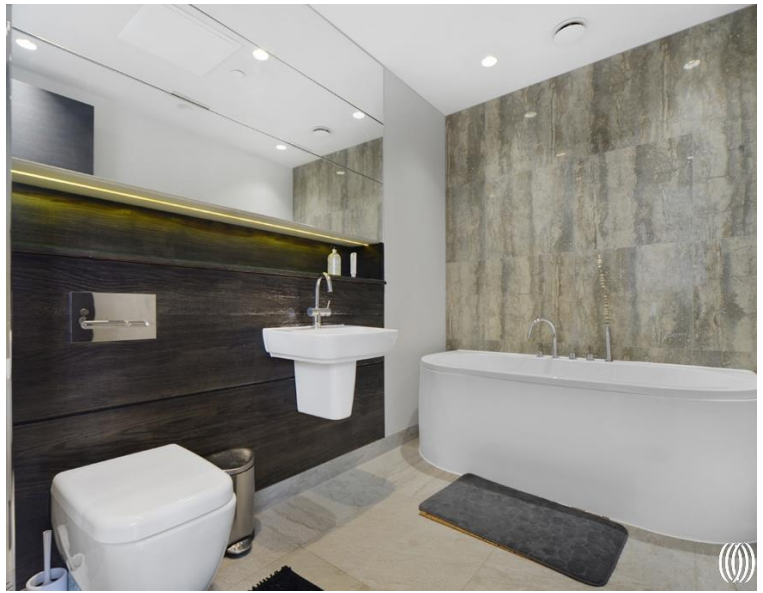


Taylor Place, London E3

Asking price £650,000 Leasehold







Description

Introducing a stunning and ultra-modern 2-bedroom, 2-bathroom sub-penthouse apartment located in the secure and gated development Nougat Court, Taylor Place, Bow.

As you step into this remarkable apartment spanning 1537 sq.ft, you'll be impressed by the well-appointed hallway with large storage and guest W/C that leads you into the spacious open-plan living area. Bathed in natural light, this space is perfect for relaxation. The contemporary kitchen boasts sleek countertops, high-quality appliances offering plenty of storage. To top it off, you have the rare advantage of a north-west facing private terrace spanning close to 400 sq.ft where you will enjoy afternoon and evening sun. The apartment also boasts two generously sized bedrooms, both with built-in storage and high-end, fully tiled en-suite bathrooms. Other features include floor to ceiling windows and air-conditioning throughout.

Situated next door to Stratford, you'll have easy access to an array of amenities, including shops, restaurants, and parks (Victoria Park and Queen Elizabeth Olympic Park). Excellent transport links with Pudding Mill Lane DLR, Stratford International, Stratford Underground, and Bow Road stations, providing easy access across London via the Central, Jubilee, and District lines, as well as Overground and National Rail.

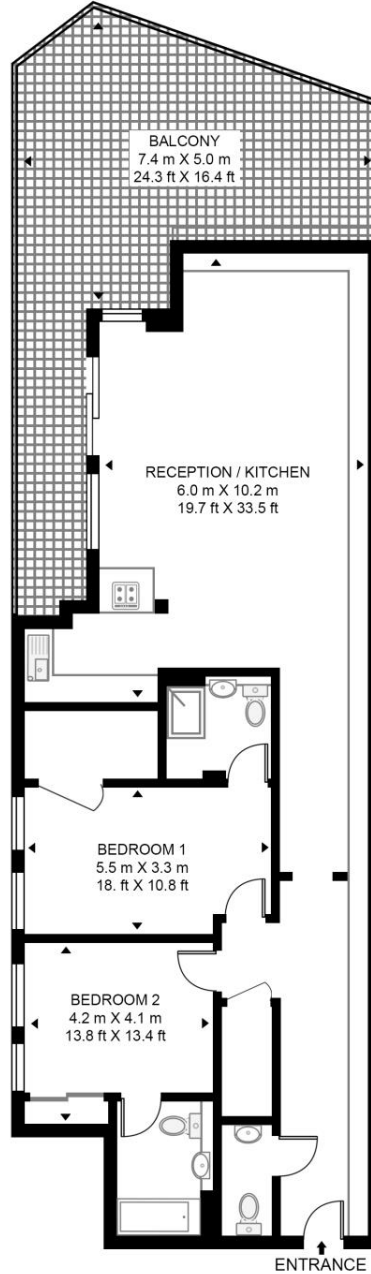
- Two bedrooms
- Two bathrooms (both with en-suites)
- 400 sq.ft private terrace
- Ultra modern throughout
- Guest WC
- 4th floor with lift
- Concierge
- Close to transport and amenities
- Approx. 1537 sq.ft (142.8 sq.m)
- EPC Rating B

Floorplan

1,537 sq ft | 143 sq m

NOUGAT COURT

APPROXIMATE GROSS INTERNAL FLOOR AREA 1537 SQ.FT (142.8 SQ.M)



This floor plan has been defined by the RICS Code of Measurement. This floor plan and all others are for approximate representative purposes only and upon usage is agreed to as such by the client.

WWW: hdvirtualart.com | TEL: 0203.974.1567 | EMAIL: info@hdvirtualart.com

Stratford
5 Station Street,
London E15 1DA
+4420 3147 1500
Lettingsstratford@eu.jll.com

Urban living, your way.

jll.co.uk/residential

© 2019 Jones Lang LaSalle IP, Inc. All rights reserved. All information contained herein is from sources deemed reliable; however, no representation or warranty is made to the accuracy thereof.

