



Ward Road, London E15

Guide price £350,000 Leasehold







Description

We are delighted to present this stunning one-bedroom apartment located on the 15th floor of the highly sought-after Velocity Building E15. Situated on Stratford High Street, this development offers a prime location just a short 0.3-mile walk from Stratford Station, granting effortless access to the vibrant Olympic Park and the renowned Westfield Shopping Centre.

The property includes a well-appointed bedroom, fully fitted kitchen with integrated appliances, contemporary bathroom, along with an inviting living/dining area that seamlessly connects to a private balcony, offering a serene outdoor space to relax and unwind.

Stratford, recognized as a key London transport hub, enjoys excellent connectivity to various transportation options. Within just a 6-minute walk, you can access the London Underground, as well as the London Overground, DLR, buses, regional rail services, and international travel connections from Stratford International Station.

Don't miss out on this incredible opportunity to reside in this stylish one-bedroom apartment in the heart of Stratford.

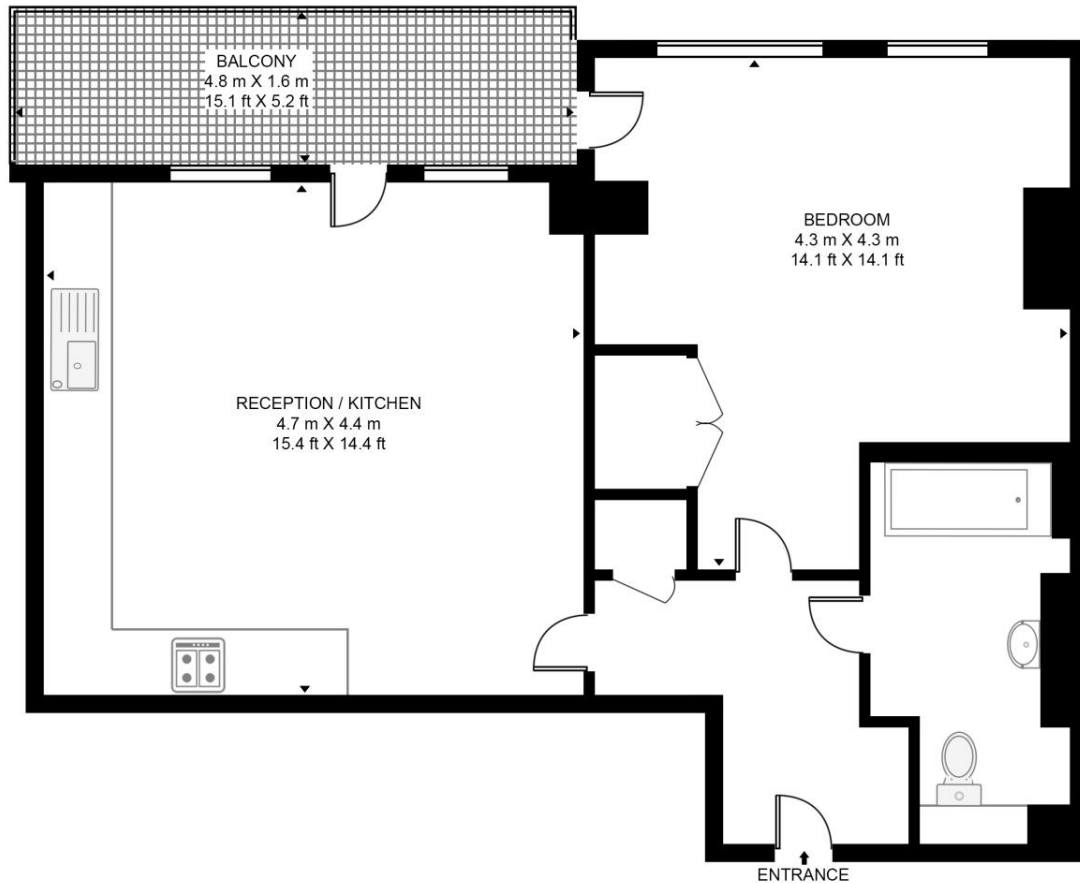
- One bedroom apartment
- 15th Floor
- Private Balcony
- High Street Location
- Queen Elizabeth Olympic Park
- 0.4 mile from Stratford station (Jubilee, Central & DLR)
- Approx 510 sq. ft (47.4 sq.m)
- EPC: B

Floorplan

510 sq ft | 47 sq m

WARD ROAD

APPROXIMATE GROSS INTERNAL FLOOR AREA 510 SQ.FT (47.4 SQ.M)



FIFTEENTH FLOOR

HDVA

This floor plan has been defined by the RICS Code of Measurement. This floor plan and all others are for approximate representative purposes only and upon usage is agreed to as such by the client.

WWW: hdvirtualart.com | TEL: 0203.974.1567 | EMAIL: info@hdvirtualart.com

Stratford
5 Station Street,
London E15 1DA
+4420 3147 1500
Lettingsstratford@eu.jll.com

Urban living, your way.

jll.co.uk/residential

© 2019 Jones Lang LaSalle IP, Inc. All rights reserved. All information contained herein is from sources deemed reliable; however, no representation or warranty is made to the accuracy thereof.

