



## Warwick Lane, London W14

Asking price £3,750,000 Leasehold







## Description

A luxury three-bedroom duplex penthouse apartment with balcony in a secure development in Kensington. This property is set on the ninth and tenth floor of the newest building in Royal Warwick Square, the latest phase of 375 Kensington High Street. The property comprises a large en-suite master bedroom, second spacious double bedroom with en-suite bathroom, third bedroom / office, guest WC, large bright open-plan kitchen and living room leading to the private balcony. Residents benefit from secure living with 24-hour concierge and also get the added benefit of luxury facilities which will be opening soon, these include a gym, swimming pool and spa. Royal Warwick Square is located very close to Kensington High Street with easy access into Central London and also a direct route to Heathrow airport.

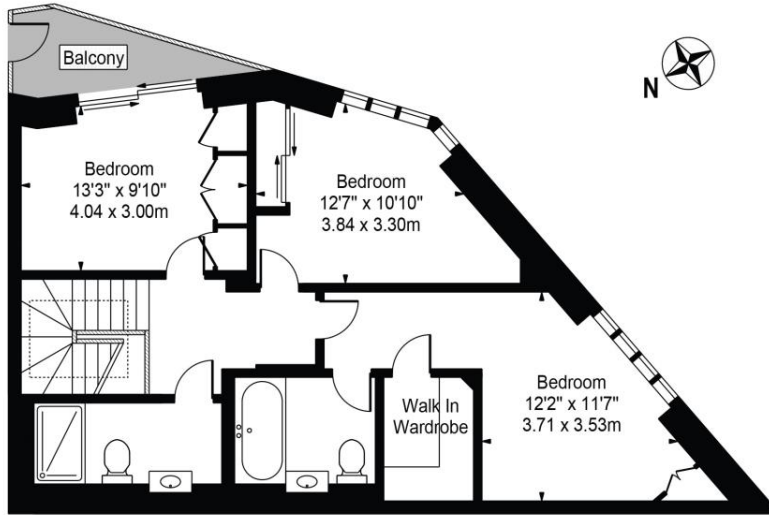
---

# Floorplan

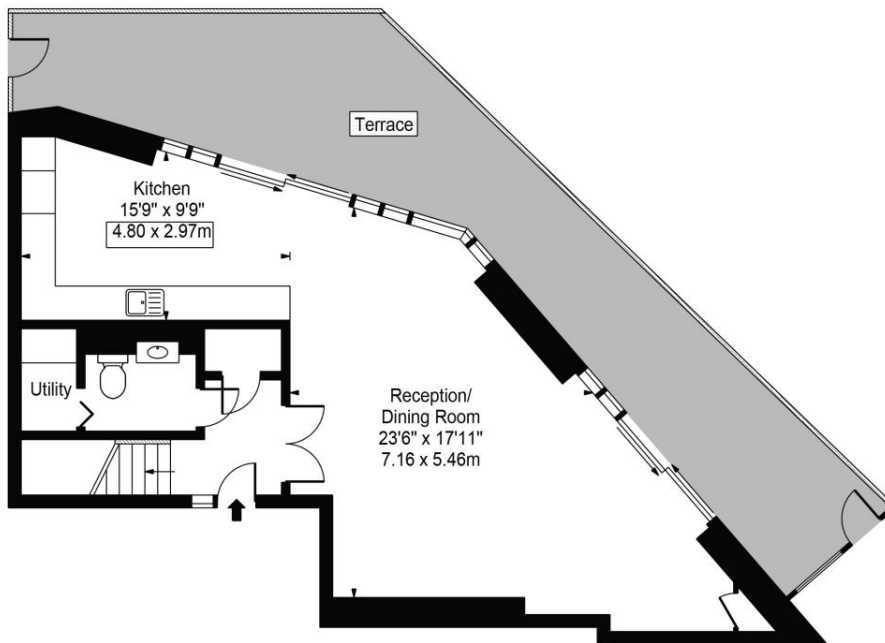
1,433 sq ft | 133 sq m

## Sherrin House

Approx. Gross Internal Area 1433 Sq Ft - 133.13 Sq M



Tenth Floor



Ninth Floor

For Illustration Purposes Only - Not To Scale

This floor plan should be used as a general outline for guidance only and does not constitute in whole or in part an offer or contract. Any intending purchaser or lessee should satisfy themselves by inspection, searches, enquiries and full survey as to the correctness of each statement. Any areas, measurements or distances quoted are approximate and should not be used to value a property or be the basis of any sale or let.

Kensington  
387 Kensington High Street,  
London W14 8QA  
+4420 7087 5696  
lettingskensington@eu.jll.com

*Urban living, your way.*

[jll.co.uk/residential](http://jll.co.uk/residential)

© 2019 Jones Lang LaSalle IP, Inc. All rights reserved. All information contained herein is from sources deemed reliable; however, no representation or warranty is made to the accuracy thereof.

