



Montana Building, Deals Gateway, London SE13 7QF



## Montana Building, London, SE13

Leasehold (103 years remaining)

***Located in the ever popular Deals Gateway Development comes this commuters dream being walking distance of Royal Greenwich Park and Central Greenwich.***

### Key Features

- 2 Bedrooms, 2 bathrooms
- Private balcony
- 4th Floor
- Council Tax: C
- Service Charge: £3,800 p/a
- Ground Rent: £385 p/a
- Close to transport links
- EPC: C

---

The accommodation offers a large entrance hall with built in cupboard, open plan lounge, dining and kitchen area which opens out onto a private balcony. There are two double bedrooms, master with en-suite shower room and built in wardrobes and a separate family bathroom finishes off the property.

Montana Building also benefits from a concierge, residents gym in site along with a Tesco Express. Being a close proximity to Lewisham and central Greenwich. This area offers a diverse range of amenities, including shopping centres, restaurants, cafes, and local markets. There are also various transportation options available, with Lewisham station providing access to National Rail services, DLR (Docklands Light Railway), and London Overground, making it convenient for commuting to other parts of London.











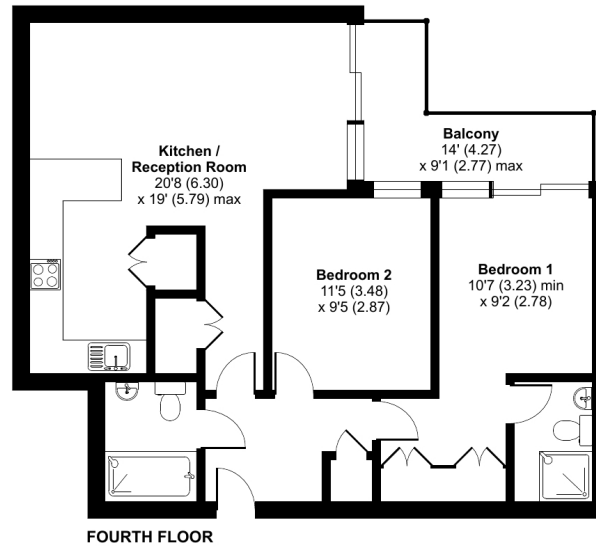


# Montana Building, Deals Gateway, London, SE13

Approximate Internal Area = 776 sq ft / 72.1 sq m

Balcony = 74 sq ft / 6.9 sq m

For identification only - Not to scale



Floor plan produced in accordance with RICS Property Measurement Standards incorporating International Property Measurement Standards (IPMS2 Residential). © rlxhocom 2024. Produced for JLL Residential. REF: 1146223

22 College Approach, Greenwich, London, SE10 9HY

Sales, Lettings & Property Management

Tel: 020 8858 9986

[residential.jll.co.uk](http://residential.jll.co.uk)

