



**STRATOSPHERE TOWER, LONDON E15**





A spacious and modern 5th floor one double bedroom apartment available to purchase in the iconic Stratosphere, E15.

Comprising entrance hall with ample storage, 1 double bedroom with built-in storage, tiled family bathroom, modern and fully fitted kitchen and large living room onto a very generous winter garden.

Residents benefit from access to a 24 hour concierge service, private residents' roof-top gymnasium and Wi-Fi lounge, along with easy access to the world renowned 2012 Olympic Park and Westfield shopping centre.

Stratford Station and Stratford International are a mere 0.1 mile walk with connections from TFL, Crossrail and National Rail including: St. Pancras International & Kings Cross, Stratford International DLR station & Canary Wharf and London City Airport.

Years remaining on lease: 993, Service charge: £2,800pa, Ground rent: £350pa, Council tax band: C

#### GUIDE PRICE

OIEO £450,000

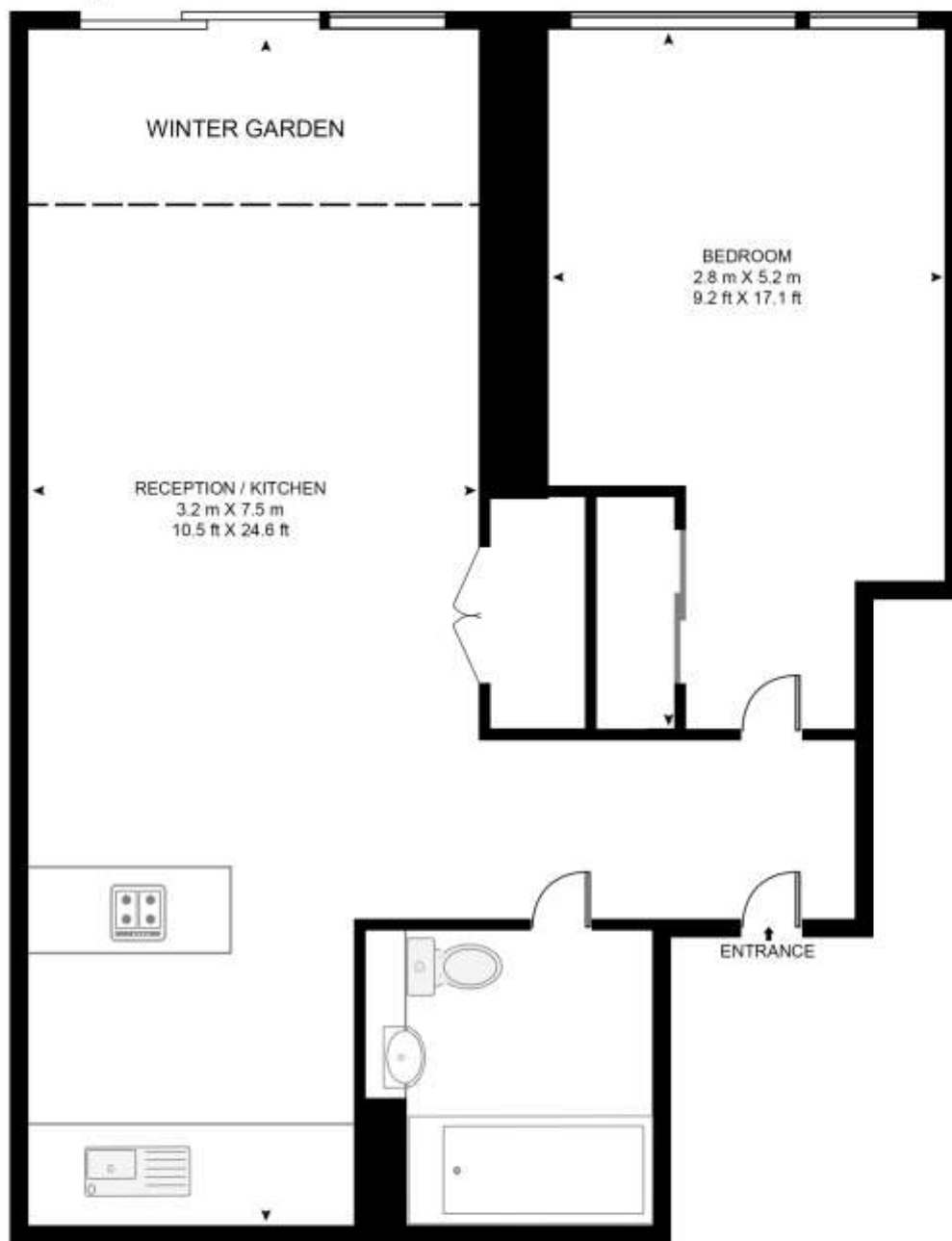
#### GROSS INTERNAL AREA

536 sq. ft (49.8 sq. m)

- Spacious one bedroom apartment
- Modern and secure development
- 5th Floor
- Wi-Fi lounge
- Residents gym
- 24 Hour concierge
- 0.1 mile from Stratford station
- Approx. 536 sq. ft (49.8 sq. m)
- EPC: B

## STRATOSPHERE TOWER

APPROXIMATE GROSS INTERNAL FLOOR AREA 536 SQ.FT (49.8 SQ.M)



FIFTH FLOOR



**HDVA**

This floor plan has been defined by the RICS Code of Measurement. This floor plan and all others are for approximate representative purposes only and upon usage is agreed to as such by the client.

WWW: [hdvirtualart.com](http://hdvirtualart.com) | TEL: 0203 874 1567 | EMAIL: [info@hdvirtualart.com](mailto:info@hdvirtualart.com)

Unex Tower  
5 Station Street  
London  
E15 1DA

These particulars are for general information only and do not constitute any part of an offer or contract. All statements contained therein are made without responsibility on the part of the vendors or lessors and are not to be relied upon as statement or representation of fact. Intending purchasers or lessees must satisfy themselves, by inspection, or otherwise, as to the correctness of each of the statements or dimensions contained in these particulars..