



Cascade Way, London W12

Asking price £700,000 Leasehold







Description

A luxurious 1 bedroom apartment with a private balcony in the prestigious White City Living development.

This thoughtfully designed accommodation features a spacious double bedroom with separate dressing area, an elegant bathroom, and an open-plan kitchen/reception with floor to ceiling glass panels that not only allow an abundance of natural light to brighten the space but also provide access to the private balcony.

White City Living is an exquisite development nestled within serene communal landscaped gardens. Its prime location adjacent to Westfield and Wood Lane tube station ensures convenient access to a range of amenities. In addition, residents can indulge in exclusive privileges, such as a 24-hour concierge service and a host of exceptional facilities including a state-of-the-art gym, rejuvenating spa, immersive cinema, and luxurious swimming pool.

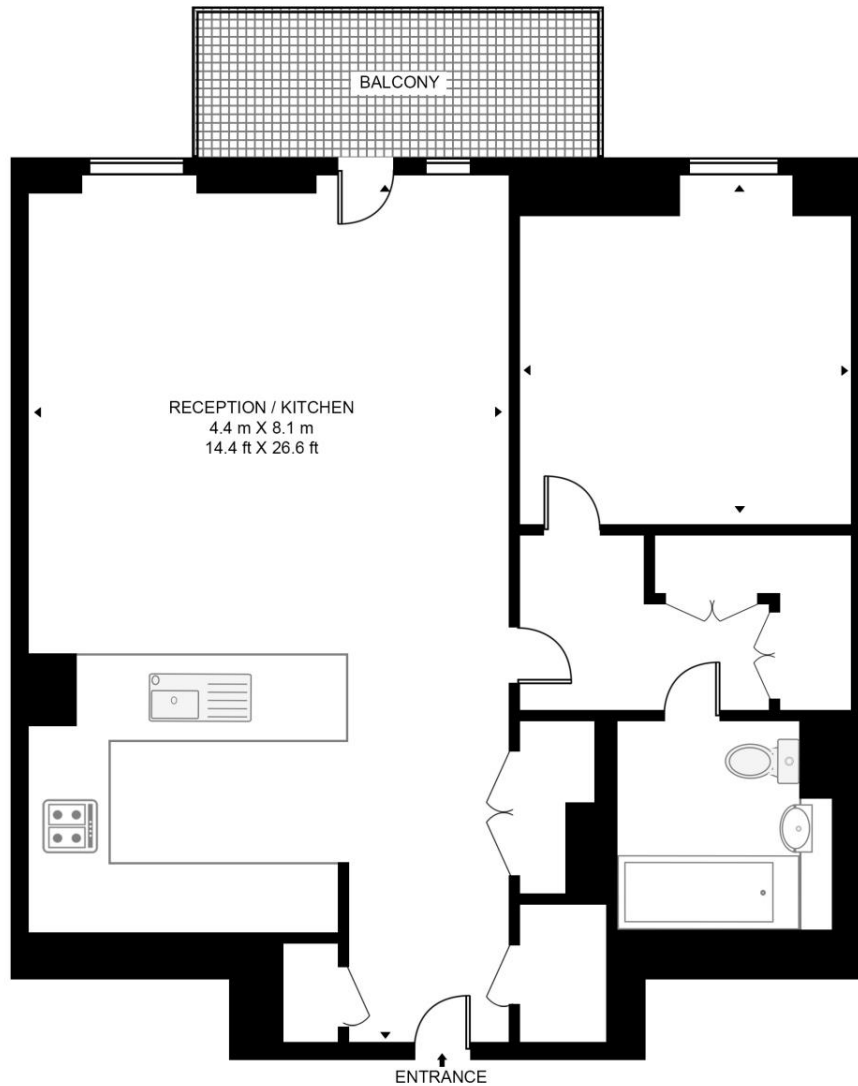
- White City Living
- 1 Bedroom
- 1 Bathroom
- Private balcony
- 24 Hr concierge
- Residents facilities
- Wood Lane station and Westfield Shopping Centre are within 400 yards
- White City station within 550 yards
- Approx. 619 sq ft / 57.5 sq m
- EPC B

Floorplan

619 sq ft | 58 sq m

PARKSIDE APARTMENTS, WHITE CITY LIVING

APPROXIMATE GROSS INTERNAL FLOOR AREA 619 SQ.FT (57.5 SQ.M)



SIXTH FLOOR



This floor plan has been defined by the RICS Code of Measurement. This floor plan and all others are for approximate representative purposes only and upon usage is agreed to as such by the client.
WWW: hdvirtualart.com | TEL: 0203.974.1567 | EMAIL: info@hdvirtualart.com

Kensington
387 Kensington High Street,
London W14 8QA
+4420 7087 5696
lettingskensington@eu.jll.com

Urban living, your way.

jll.co.uk/residential

© 2019 Jones Lang LaSalle IP, Inc. All rights reserved. All information contained herein is from sources deemed reliable; however, no representation or warranty is made to the accuracy thereof.

