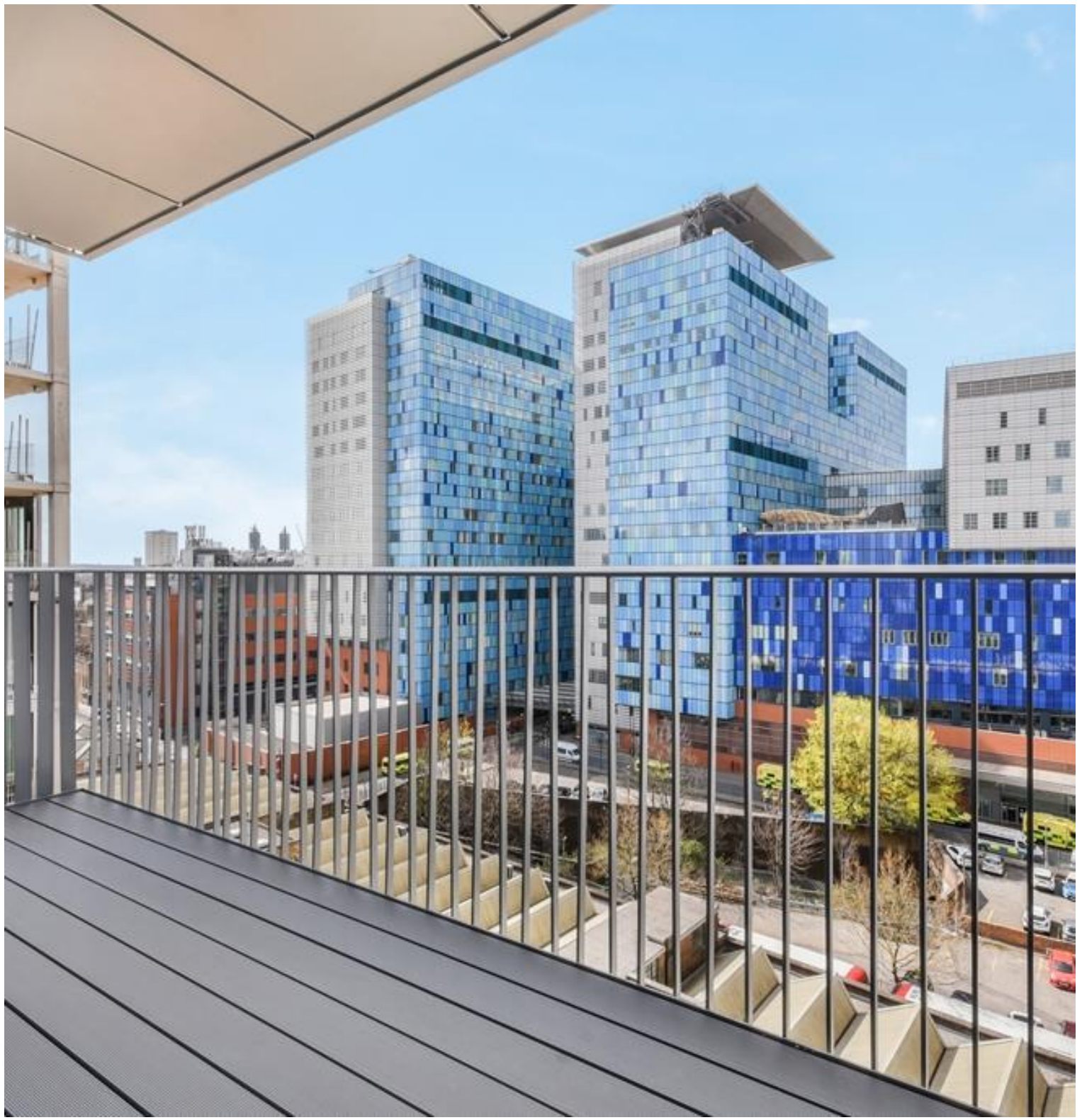




Tapestry Way, London E1

Price £735 per week - Furnished, Unfurnished







Description

A stunning two bedroom within Jacquard Point, the Silk District, E1.

This luxury apartment offers great living space and is offered fully furnished or unfurnished. The apartment comprises an open plan living room and integrated kitchen, separate sleeping area with large fitted wardrobes, bathroom with porcelain finish, tiled flooring throughout and good storage space.

The Silk District is a development from Mount Anvil and offers its residents fantastic amenities which include 24 hour concierge, on site gym, cinema room, rooftop gardens and resident's lounge. The development is within easy reach of the City of London and in the heart of the Whitechapel regeneration area, approximately 0.3 miles from Whitechapel Underground / Crossrail station.

As well as paying the rent, you may also be required to make the following permitted payments. If your tenancy does not qualify as an AST, additional fees may apply. Please visit jll.co.uk/fees for details of fees which may be payable when renting a property.

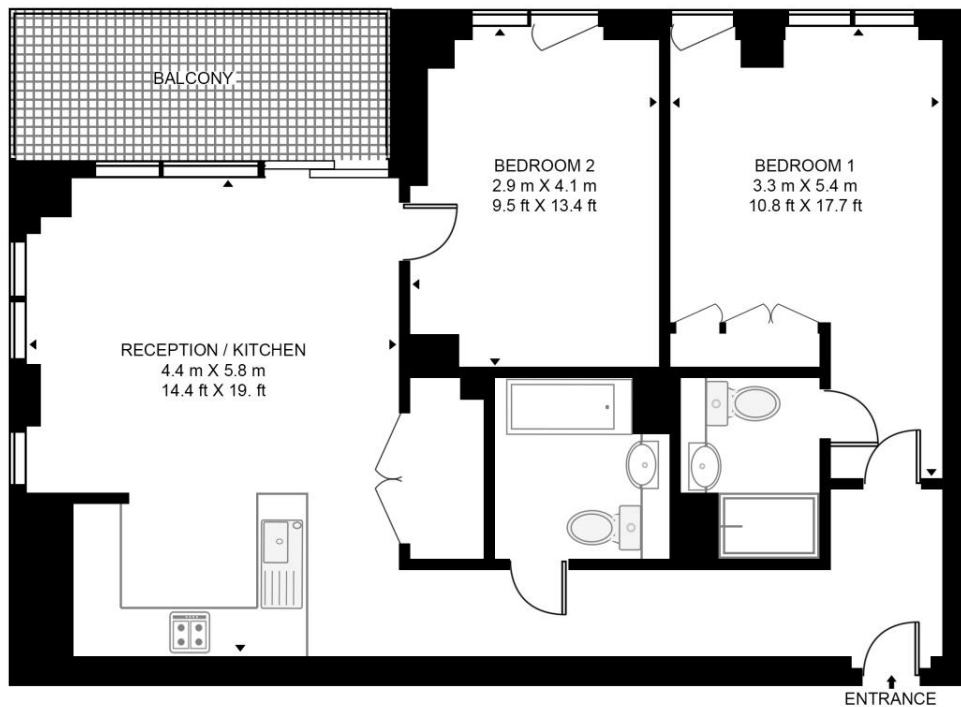
- 2 Bedrooms
- 2 Bathrooms
- 9th Floor
- Large Balcony
- Open-plan living / dining area
- Communal rooftop gardens
- 24 hour concierge
- On-site leisure facilities including cinema and gym
- 0.3 miles from Whitechapel Station
- Approx. 770 sq ft (71.5 sq m)

Floorplan

770 sq ft | 72 sq m

JAQUARD POINT, THE SILK DISTRICT

APPROXIMATE GROSS INTERNAL FLOOR AREA 770 SQ.FT (71.5 SQ.M)



NINTH FLOOR



This floor plan has been defined by the RICS Code of Measurement. This floor plan and all others are for approximate representative purposes only and upon usage is agreed to as such by the client.
WWW: hdvirtualart.com | TEL: 0203.974.1567 | EMAIL: info@hdvirtualart.com

City
25 Walbrook The Walbrook
Building,
London EC4N 8AF
+4420 7337 4000

Urban living, your way.

jll.co.uk/residential

© 2019 Jones Lang LaSalle IP, Inc. All rights reserved. All information contained herein is from sources deemed reliable; however, no representation or warranty is made to the accuracy thereof.

