



Great Eastern Road, London E15

Guide price £600,000 Leasehold







Description

This 24th floor ultra-modern two bedroom apartment with panoramic views of London's skyline is located within one of Stratford's most iconic developments, Stratosphere Tower E15. Residents benefit from access to a 24 hour concierge service, private residents' roof-top (36th floor) gym, Wi-Fi lounge and bicycle storage.

Comprising entrance hall with ample storage, 2 double bedrooms, 2 bathrooms (en-suite to master bedroom), modern and fully fitted kitchen and large living room with views of the City Skyline. The property has under-floor heating and current owners have also added air conditioning throughout the apartment for easy climate control.

Kitchen, living room & hallway come with a quality laminate, bedrooms are carpeted in a neutral colour tone. Décor with smooth finish to all walls & ceilings, painted in white emulsion and white satinwood finish. Bath with thermostatic rain shower mixer & glazed screen, contemporary ceramic tiling, large vanity mirror, bespoke cabinetry with built in storage & low voltage socket and two towel rails.

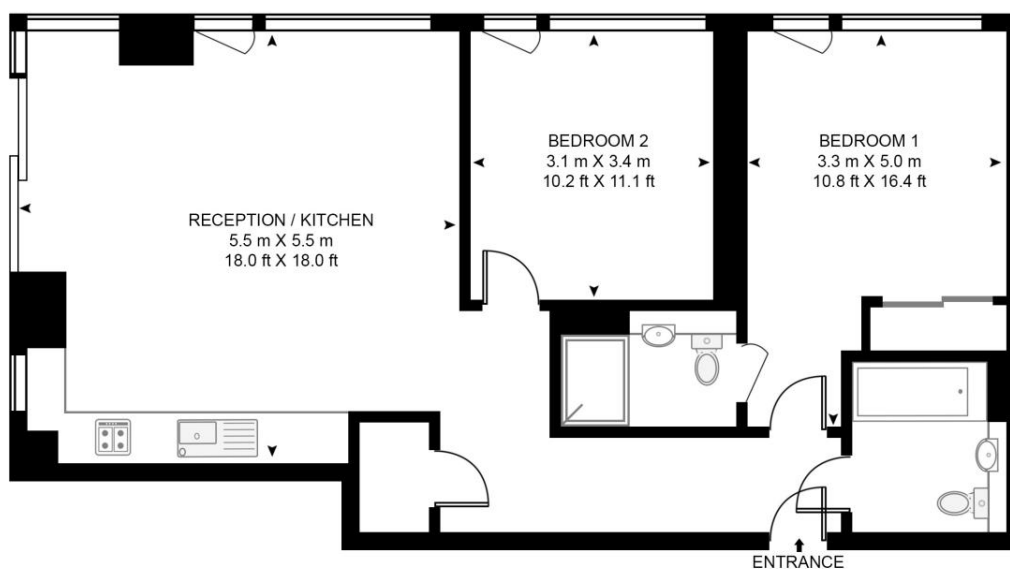
- Two bedrooms
- Two bathrooms (one en-suite)
- 24th floor (lift access)
- Striking sunset views
- Air conditioning
- Underfloor heating
- Approx. 796 sq. ft (74 sq.m)
- 24hr Concierge service
- Residential gym and roof terrace
- Wi-Fi lounge

Floorplan

796 sq ft | 74 sq m

STRATOSPHERE TOWER

APPROXIMATE GROSS INTERNAL FLOOR AREA 796 SQ.FT (74 SQ.M)



TWENTY FOURTH FLOOR



This floor plan has been defined by the RICS Code of Measurement. This floor plan and all others are for approximate representative purposes only and upon usage is agreed to as such by the client.

WWW: hdvirtualart.com | TEL: 0203.974.1567 | EMAIL: info@hdvirtualart.com

Stratford
5 Station Street,
London E15 1DA
+4420 3147 1500
Lettingsstratford@eu.jll.com

Urban living, your way.

jll.co.uk/residential

© 2019 Jones Lang LaSalle IP, Inc. All rights reserved. All information contained herein is from sources deemed reliable; however, no representation or warranty is made to the accuracy thereof.

