

## 50 Wandsworth Road, Londo SW8

Asking price £720,000 Leasehold









## Description

A bright and modern 1 bedroom apartment in Nine Elms Point, a popular development located a stones throw from Nine Elms Station.

This spacious one bedroom apartment would make the ideal first home for a young professional, with the Northern Line offering links into Central London in just 15 minutes. Residents can enjoy the luxury facilities within the development, including a gym and cinema.

This luxury apartment comprises of open plan kitchen reception room leading to private balcony, master bedroom with fitted cupboards and a spacious bathroom.

Further benefits include comfort cooling throughout the apartment and wooden floors.

Within the development the residents have exclusive use of a private gymnasium, residents library, cinema room & lounge, business suite and 24 hr concierge. Conveniently a large Sainsbury's Supermarket is located under the development and Nine Elms station is a short walk.

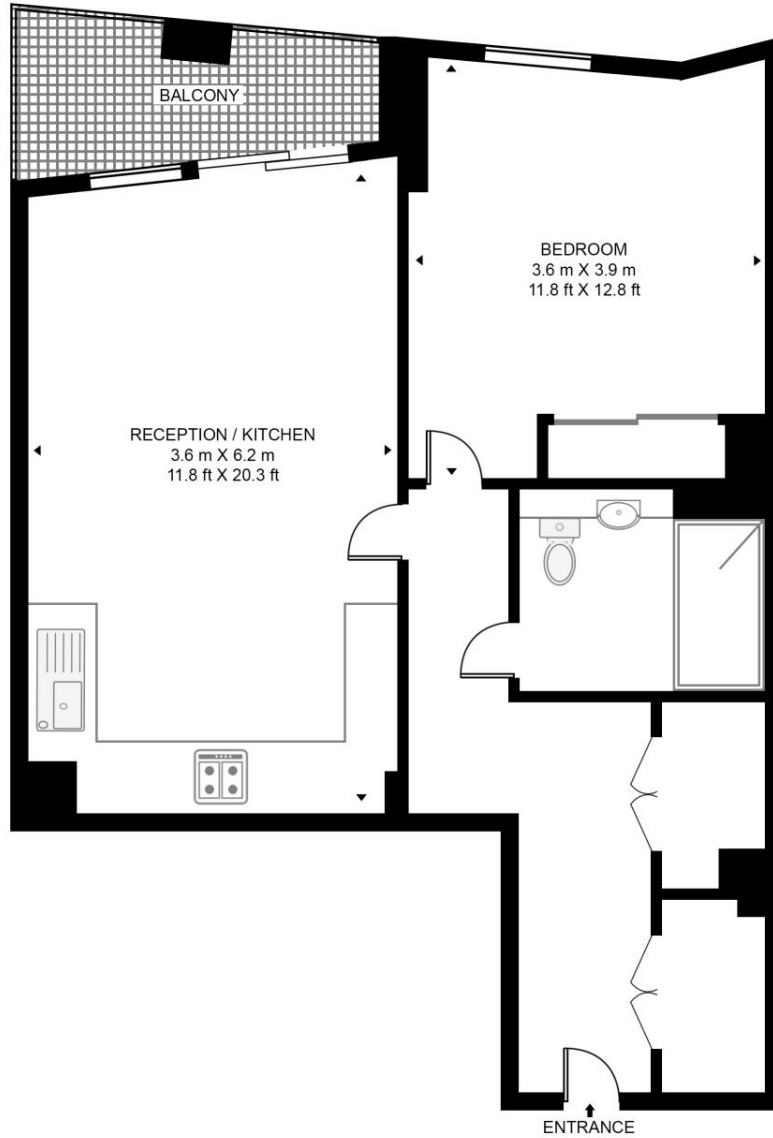
Set across seven thoughtfully designed and architecturally individual buildings each connected with one another via landsc

- Spacious 1 bedroom apartment
- Private balcony
- Stones throw from Nine Elms station
- Comfort cooling throughout the apartment
- Residents Gym & Cinema
- 24 Concierge
- 593 sq ft (55.1 sq m)
- Leasehold: 988 years remaining
- Service charge: £3,608.54 p/a
- Ground rent: £375 p/a

# Floorplan

593 sq ft | 55 sq m

**GLADWIN TOWER, WANDSWORTH ROAD**  
APPROXIMATE GROSS INTERNAL FLOOR AREA 593 SQ.FT (55.1 SQ.M)



FIFTEENTH FLOOR



This floor plan has been defined by the RICS Code of Measurement. This floor plan and all others are for approximate representative purposes only and upon usage is agreed to as such by the client.  
WWW: [hdvirtualart.com](http://hdvirtualart.com) | TEL: 0203.974.1567 | EMAIL: [info@hdvirtualart.com](mailto:info@hdvirtualart.com)

Nine Elms  
4 Riverlight Quay,  
London SW11 8DG  
+4420 3147 1333  
[lettingsnineelms@eu.jll.com](mailto:lettingsnineelms@eu.jll.com)

*Urban living, your way.*

[jll.co.uk/residential](http://jll.co.uk/residential)

© 2019 Jones Lang LaSalle IP, Inc. All rights reserved. All information contained herein is from sources deemed reliable; however, no representation or warranty is made to the accuracy thereof.

