



Commercial Street, London E1

Price £785 per week - Furnished







Description

A stunning 2 bedroom apartment in the sought after Cityscape development.

This rarely available double aspect 2 bedroom apartment is situated on the 6th floor and offers approximately 866 sq ft of living space. The luxury apartment comprises 2 double bedrooms with en-suite and fitted wardrobes to master bedroom, living and dining area with access to generous sized balcony, fully fitted kitchen, two contemporary bathrooms with porcelain and glass tiling and wooden flooring. The apartment benefits from floor to ceiling windows, maximizing views and natural light.

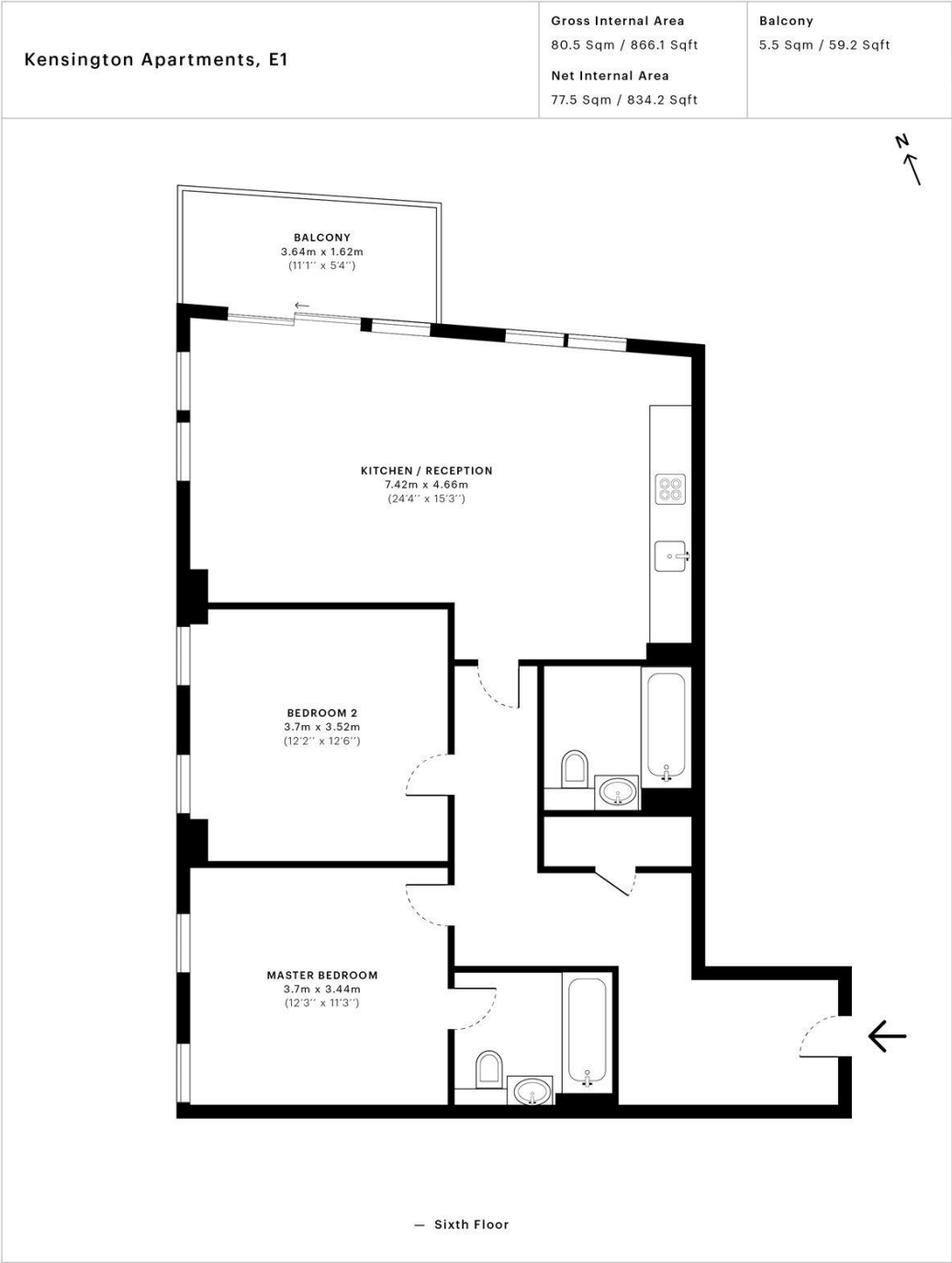
The development is situated next Aldgate East Station and a short walk from the City of London. Located in Zone 1, the development is close to Aldgate (0.3 miles) and Liverpool Street (0.6 miles) stations. Residents also benefit from 24 hour concierge service and on site gymnasium.

Rent is payable on a monthly basis and you may be required to pay more than a month's rent in advance, depending on your circumstances. You will be required to pay a 1 week holding deposit following a successful offer. Utility bills, council tax, telephone line and broadband are not included in the rent. As w

- 2 Bedrooms
- 2 Bathrooms
- Balcony
- High specification
- 24 hour concierge
- 0.1 mile from Aldgate Station
- Approx. 866 sq ft (80.5 sq m)
- Furnished
- EPC: B
- Council tax: Band F

Floorplan

866 sq ft | 81 sq m



This floor plan was captured for JLL, City Office on 12/04/2018. Architectural features to scale, derived from millions of laser scan points, accurate to +/- 3cm and produced in accordance with the Royal Institute of Chartered Surveyors Property Measurement standards. Gross Internal Area is measured from the internal faces of external walls and includes internal walls/obstructions. Net Internal Area excludes internal walls/obstructions. Please perform your own checks before relying on these figures in any transaction.



City
25 Walbrook The Walbrook
Building,
London EC4N 8AF
+4420 7337 4000

Urban living, your way.

jll.co.uk/residential

© 2019 Jones Lang LaSalle IP, Inc. All rights reserved. All information contained herein is from sources deemed reliable; however, no representation or warranty is made to the accuracy thereof.

