



Long Lane, London SE1
Price £820 per week - Furnished







Description

A brand new 2 bedroom apartment in the Taper Building, located in the very heart of Bermondsey, Zone 1's creative hub.

Situated on the 3rd floor, this luxury 2 bedroom apartment boasts approximately 858 sq ft of living space.

The apartment comprises open plan reception with fully fitted kitchen featuring BOSCH appliances, master bedroom with fitted wardrobes and en-suite, second double bedroom with fitted wardrobes, contemporary bathroom.

Each apartment is finished to a high specification with comfort cooling and the development benefits from concierge, residents gym, communal courtyard and roof terrace. London Bridge station is just 0.3 miles away, with both Overground, Northern line and Jubilee line services.

Rent is payable on a monthly basis and you may be required to pay more than a month's rent in advance, depending on your circumstances. You will be required to pay a 1 week holding deposit following a successful offer. Utility bills, council tax, telephone line and broadband are not included in the rent. As well as paying the rent, you may also be required to make some additional permitted payments. If your tenancy does not q

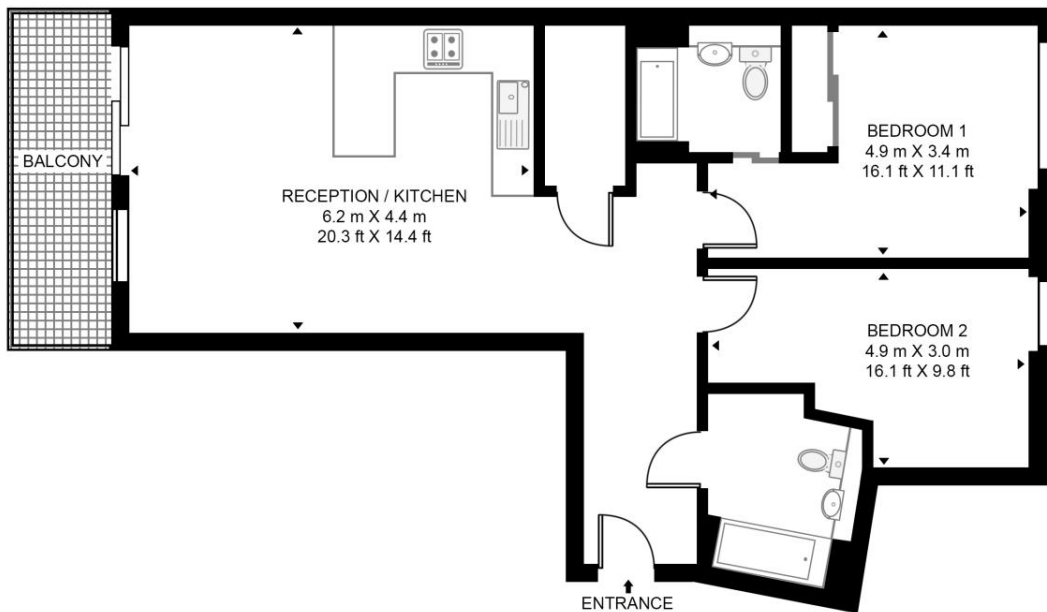
- 2 Bedrooms
- 2 Bathrooms
- 3rd floor
- Balcony
- 24 hour concierge
- Resident's gym
- Resident's garden
- 0.5 miles from London Bridge Station
- Approx. 858 sq ft
- EPC:B

Floorplan

858 sq ft | 80 sq m

TAPER BUILDING

APPROXIMATE GROSS INTERNAL FLOOR AREA 858 SQ.FT (79.7 SQ.M)



THIRD FLOOR



This floor plan has been defined by the RICS Code of Measurement. This floor plan and all others are for approximate representative purposes only and upon usage is agreed to as such by the client.
WWW: hdvirtualart.com | TEL: 0203.974.1567 | EMAIL: info@hdvirtualart.com

City
25 Walbrook The Walbrook
Building,
London EC4N 8AF
+4420 7337 4000

Urban living, your way.

jll.co.uk/residential

© 2019 Jones Lang LaSalle IP, Inc. All rights reserved. All information contained herein is from sources deemed reliable; however, no representation or warranty is made to the accuracy thereof.

