



## Whiteheads Grove, London SW3

Price £725 per week - Unfurnished









## Description

A wonderful seventh floor apartment (with lift) situated in this highly desirable, portered development in the heart of Chelsea. The property consists of one double bedroom, one bathroom, reception room and a fully fitted kitchen. Cranmer Court is conveniently located for all the excellent shops, restaurants and transport facilities of Sloane Square and Sloane Street.

Rent is payable on a monthly basis and you may be required to pay more than a month's rent in advance, depending on your circumstances. You will be required to pay a 1 week holding deposit following a successful offer. Utility bills, council tax, telephone line and broadband are not included in the rent. As well as paying the rent, you may also be required to make some additional permitted payments. If your tenancy does not qualify as an AST, additional fees may apply. Please visit [jll.co.uk/fees](http://jll.co.uk/fees) for details of fees which may be payable when renting a property.

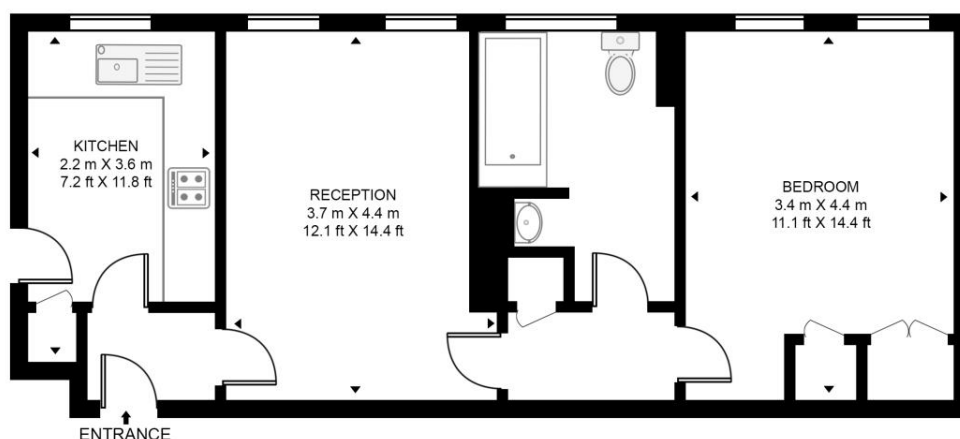
- 1 Double bedroom
- 1 Bathroom
- Reception room
- Fully fitted kitchen
- 24-hour porter
- Lift
- Communal heating & hot water included
- Approx. 534 sq ft (49.6 sq m)
- Unfurnished
- EPC: C

# Floorplan

534 sq ft | 50 sq m

## CRANMER COURT, WHITEHEADS GROVE

APPROXIMATE GROSS INTERNAL FLOOR AREA 534 SQ.FT (49.6 SQ.M)



## SEVENTH FLOOR



This floor plan has been defined by the RICS Code of Measurement. This floor plan and all others are for approximate representative purposes only and upon usage is agreed to as such by the client.

WWW: [hdvirtualart.com](http://hdvirtualart.com) | TEL: 0203.974.1567 | EMAIL: [info@hdvirtualart.com](mailto:info@hdvirtualart.com)

Chelsea  
2 Cale Street,  
London SW3 3QU  
+4420 7399 5010  
[saleschelsea@jll.com](mailto:saleschelsea@jll.com)

*Urban living, your way.*

[jll.co.uk/residential](http://jll.co.uk/residential)

© 2019 Jones Lang LaSalle IP, Inc. All rights reserved. All information contained herein is from sources deemed reliable; however, no representation or warranty is made to the accuracy thereof.

