



## Egerton Terrace, London SW3

Price £1,000 per week - Unfurnished







## Description

A wonderful second floor flat (with lift) situated in the heart of Knightsbridge. The property consists of master bedroom with en suite bathroom, second double bedroom, one shower room, reception room and a fully fitted, open plan kitchen.

The flat benefits from wooden flooring in the reception room and comfort cooling. Egerton Terrace is ideally situated close to the shops, restaurants and amenities of both Knightsbridge and South Kensington.

Please note that any furniture included in the photos is not included with property and are for display purposes only.

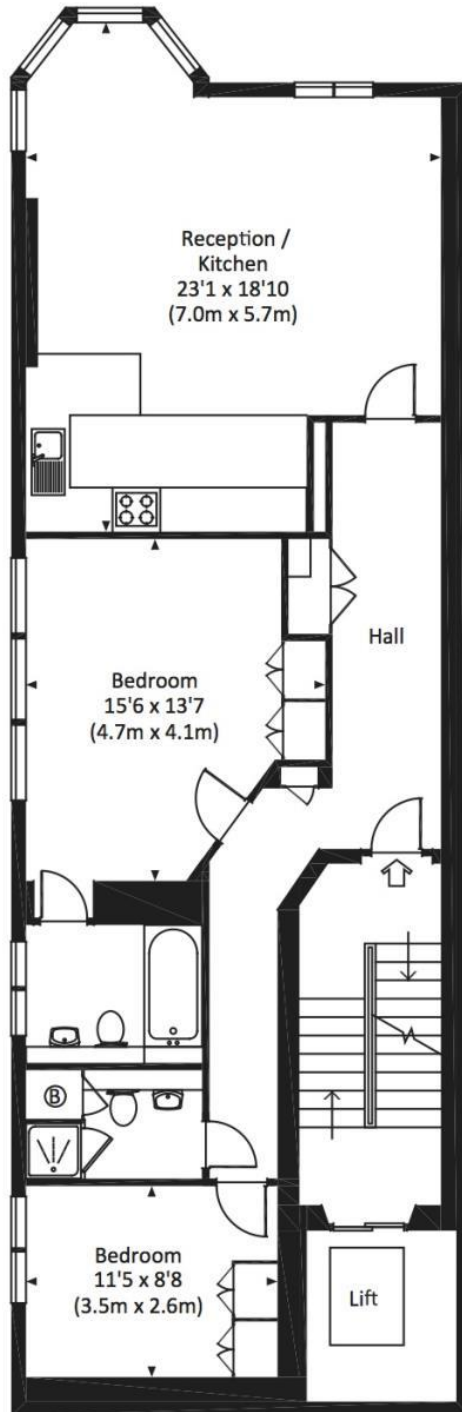
Rent is payable on a monthly basis and you may be required to pay more than a month's rent in advance, depending on your circumstances. You will be required to pay a 1 week holding deposit following a successful offer. Utility bills, council tax, telephone line and broadband are not included in the rent. As well as paying the rent, you may also be required to make some additional permitted payments. If your tenancy does not qualify as an AST, additional fees may apply. Please visit [jll.co.uk/fees](http://jll.co.uk/fees) for details of fees which may be payable when renting a property.

- 2 Double bedrooms
- 1 Bathroom (en suite)
- 1 Shower room
- Reception room
- Open plan kitchen
- Approx. 938 sq ft (87 sq m)
- EPC: B
- Council tax: Band G
- Deposit: £6,000

# Floorplan

938 sq ft | 87 sq m

Approx. gross internal area  
938 Sq Ft. / 87.1 Sq M.



## SECOND FLOOR



All measurements are approximate and for illustration purposes only as defined by the RICS Code of Measuring Practice © 2014  
Dowling Jones Design www.dowlingjones.com 020 7610 9933

Knightsbridge  
174 Brompton Road,  
London SW3 1HP  
+4420 7306 1600  
SalesKnightsbridge@jll.com

*Urban living, your way.*

[jll.co.uk/residential](http://jll.co.uk/residential)

© 2019 Jones Lang LaSalle IP, Inc. All rights reserved. All information contained herein is from sources deemed reliable; however, no representation or warranty is made to the accuracy thereof.

