

## Brock Street, London NW1

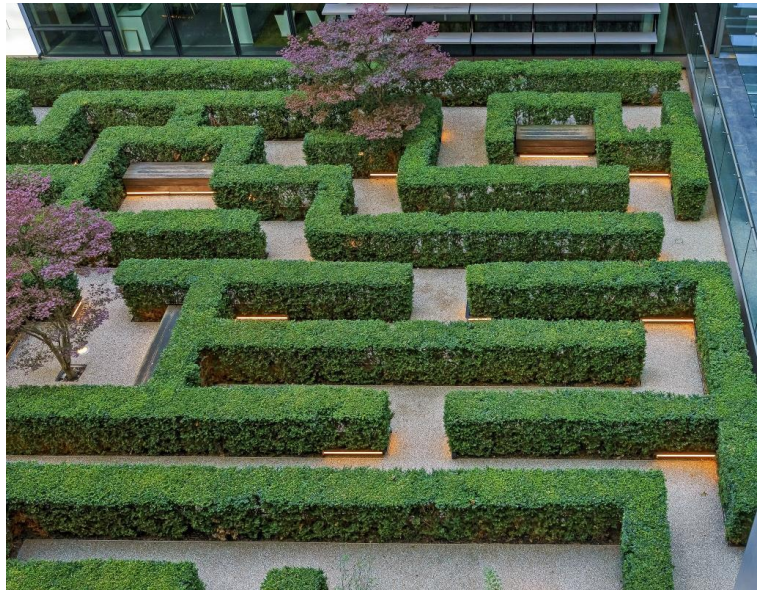
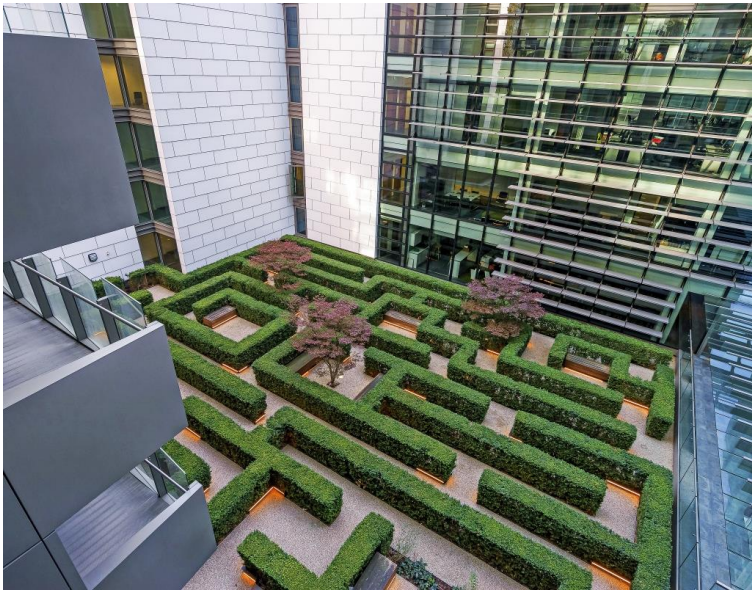
Price £1,050 per week - Furnished











## Description

A stunning tenth floor apartment (with lift) in this new development in Brock Street. The property consists of master bedroom with en suite bathroom, second double bedroom, one shower room, reception room and a fully fitted, open plan kitchen. Further benefits include tiled flooring in the reception room, comfort cooling, a wonderful terrace and 24 hour concierge service. The apartment comes with an underground parking space, as well as being conveniently located moments from the transport amenities of Warren Street and the open spaces of Regent's Park.

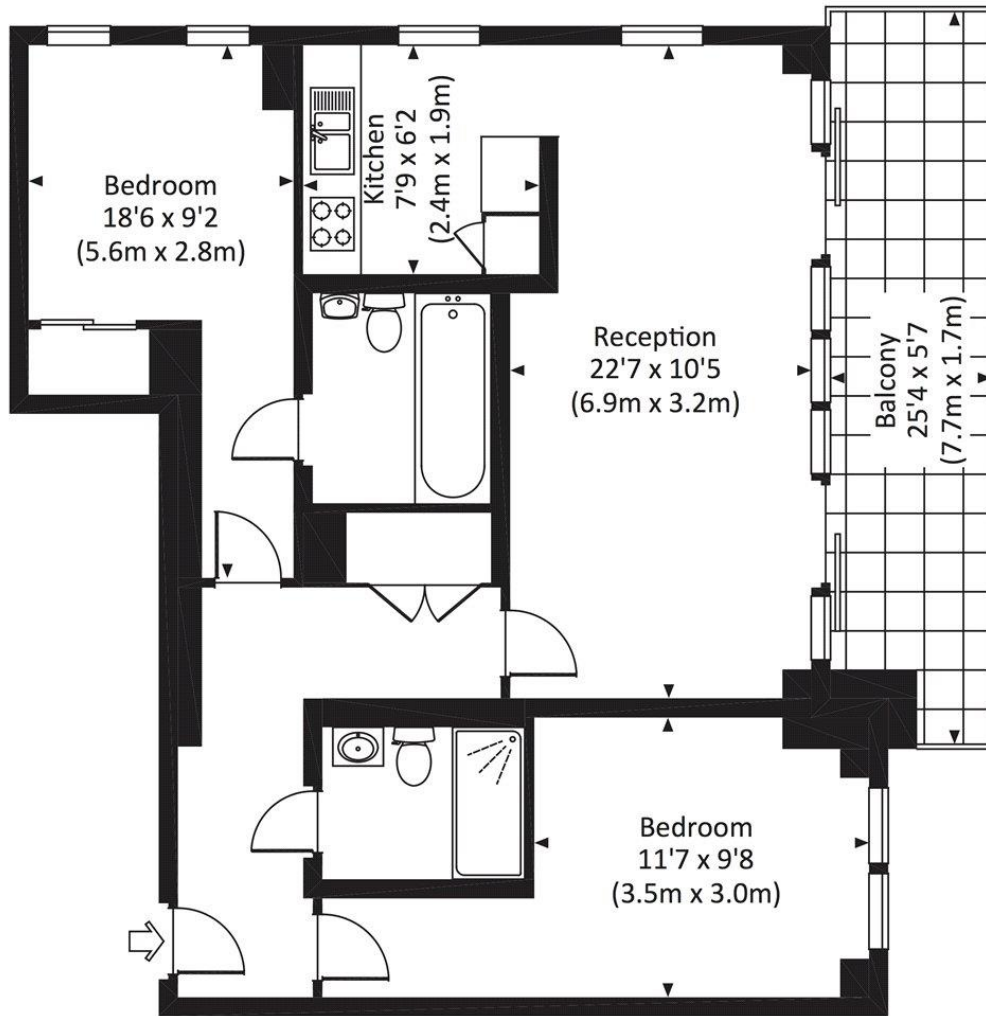
Rent is payable on a monthly basis and you may be required to pay more than a month's rent in advance, depending on your circumstances. You will be required to pay a 1 week holding deposit following a successful offer. Utility bills, council tax, telephone line and broadband are not included in the rent. As well as paying the rent, you may also be required to make some additional permitted payments. If your tenancy does not qualify as an AST, additional fees may apply. Please visit [jll.co.uk/fees](http://jll.co.uk/fees) for details of fees which may be payable when renting a property.

- 2 Double bedrooms
- 1 Bathroom (en suite)
- 1 Shower room
- Reception room
- Open plan kitchen
- Underground parking
- Tenth floor
- Terrace
- Lift
- 24 Hour concierge

# Floorplan

803 sq ft | 75 sq m

Approx. gross internal area  
803 Sq Ft. / 74.6 Sq M.



TENTH FLOOR



All measurements have been made in accordance with RICS Code of Measuring Practice which are approximate only and only for illustrative purposes. For the avoidance of doubt, Dowling Jones Design shall not be liable for any reliance on these measurements. © 2015 www.dowlingjones.com 020 7610 9933

Mayfair and Marylebone  
13a St George Street,  
London W1S 2FQ  
+44 207 399 5550  
mayfair@jll.com

*Urban living, your way.*

[jll.co.uk/residential](http://jll.co.uk/residential)

© 2019 Jones Lang LaSalle IP, Inc. All rights reserved. All information contained herein is from sources deemed reliable; however, no representation or warranty is made to the accuracy thereof.

