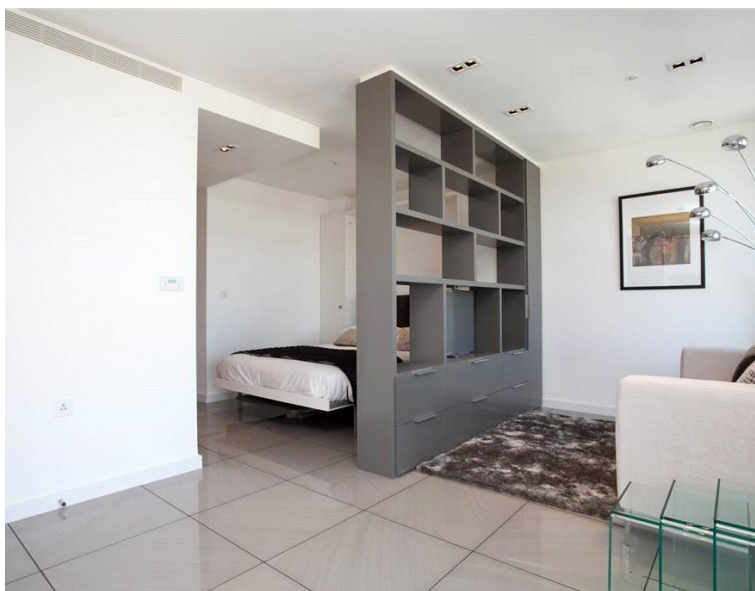
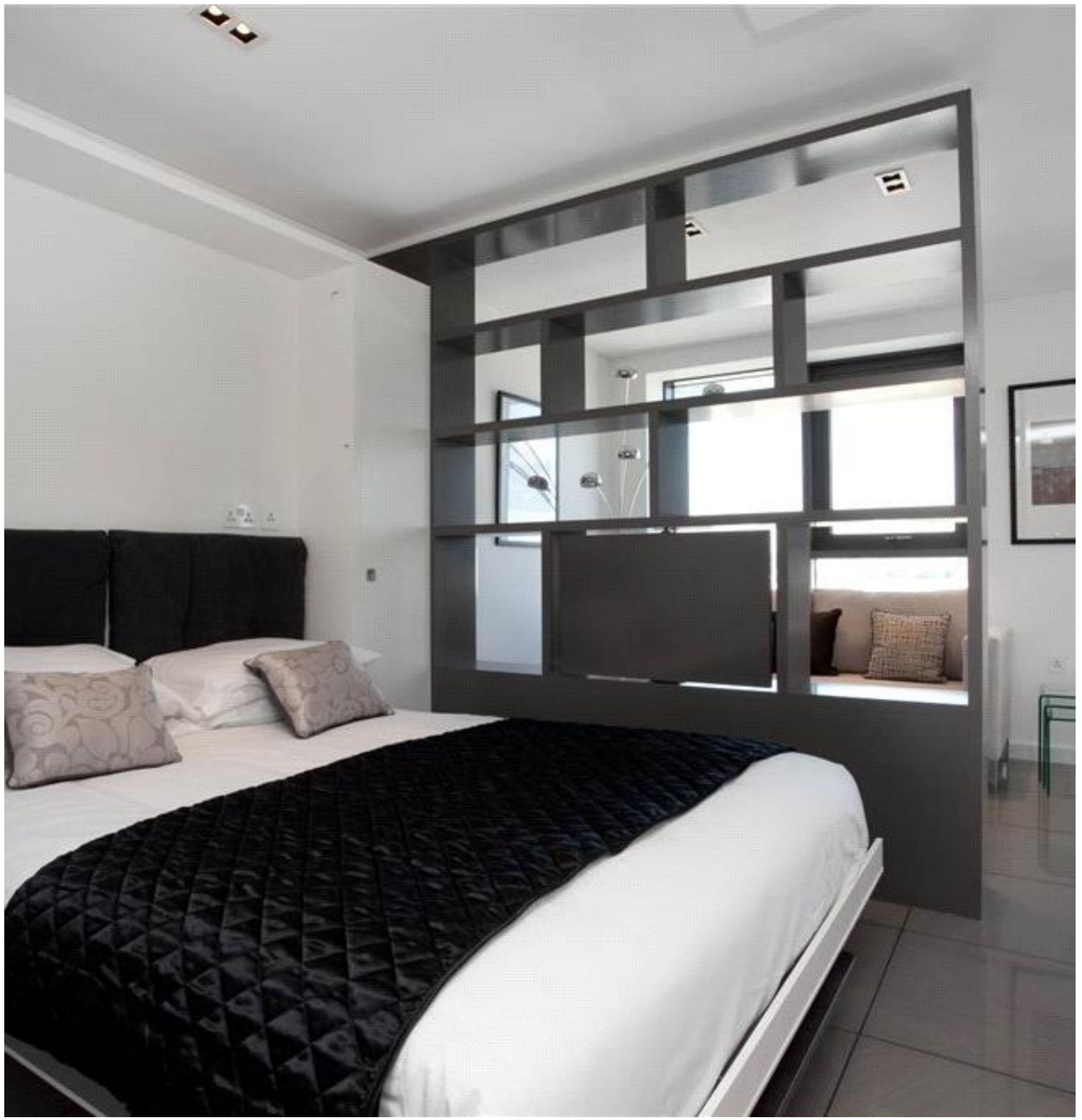


The Triton Building, London NW1

Price £630 per week - Furnished







Description

A stunning 11th floor studio apartment in this secure development with concierge service on Brock Street. Triton Building is located just a short walk from The Regent's Park as well as transport links from Warren Street, Euston Square, and Euston.

The property offers a modern open-plan kitchen, spacious reception room, large private balcony, and a modern shower room with a walk-in shower. The apartment is also offered furnished.

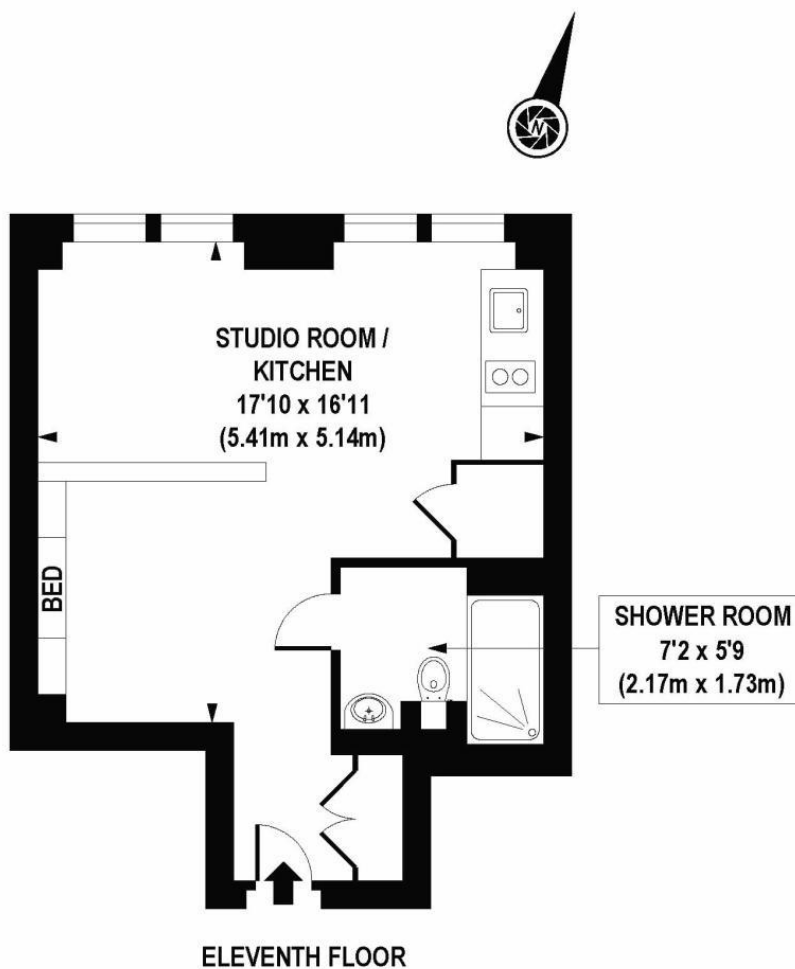
Pictures and Floorplan are for illustrative purposes only.

Rent is payable on a monthly basis and you may be required to pay more than a month's rent in advance, depending on your circumstances. You will be required to pay a 1 week holding deposit following a successful offer. Utility bills, council tax, telephone line and broadband are not included in the rent. As well as paying the rent, you may also be required to make some additional permitted payments. If your tenancy does not qualify as an AST, additional fees may apply. Please visit jll.co.uk/fees for details of fees which may be payable when renting a property.

- Modern Development
- 24hr Concierge
- Large Private Balcony
- Furnished
- Open-plan Kitchen / Reception
- Walk-in Shower
- Close to Regents Park
- Council tax: Band D
- Deposit amount: £3,460

Floorplan

336 sq ft | 31 sq m



APPROX. GROSS INTERNAL FLOOR AREA 336 sq. ft / 31.22 sq. m

COMPLIANT WITH RICS CODE OF MEASURING PRACTICE Floorplan is for illustrative purposes only and is not to scale. Every attempt has been made to ensure the accuracy of the floorplan shown, however all measurements, fixtures, fittings and data shown are an approximate interpretation for illustrative purposes only. Liability for errors, omissions or mis-statement through negligence or otherwise is hereby excluded.

CPICREATIVE
Property Marketing

Mayfair and Marylebone
13a St George Street,
London W1S 2FQ
+44 207 399 5550
mayfair@jll.com

Urban living, your way.

jll.co.uk/residential

© 2019 Jones Lang LaSalle IP, Inc. All rights reserved. All information contained herein is from sources deemed reliable; however, no representation or warranty is made to the accuracy thereof.

