



Fountain Park Way, London W12

Asking price £1,100,000 Leasehold







Description

Welcome to White City Living, where luxury meets comfort in this stunning 2 bedroom, 2 bathroom apartment. Located on the 4th floor of the prestigious award-winning development of White City Living by Berkeley Group.

This charming residence offers an inviting open-plan kitchen and reception area, designed to effortlessly blend functionality and style. The modern kitchen boasts state-of-the-art appliances and ample storage space and has access to the delightful corner balcony that allows for effortless al fresco dining or simply enjoying a morning coffee or glass of wine and sunset views.

White City Living takes pride in offering an exceptional residential experience, with an array of high-end amenities available exclusively to its residents. These include a 24-hour concierge, fully equipped fitness centre, landscaped gardens, and a residents' lounge where you can unwind after a long day. Nestled conveniently in the vicinity, with both White City and Wood Lane tube stations located just 0.2 miles away, and the popular Westfield shopping centre just a short 0.3 mile stroll. The development is surrounded by a wide range of cultural, dining, and shopping destinations, ensuring you'll never be short of options for entertainment and leisure.

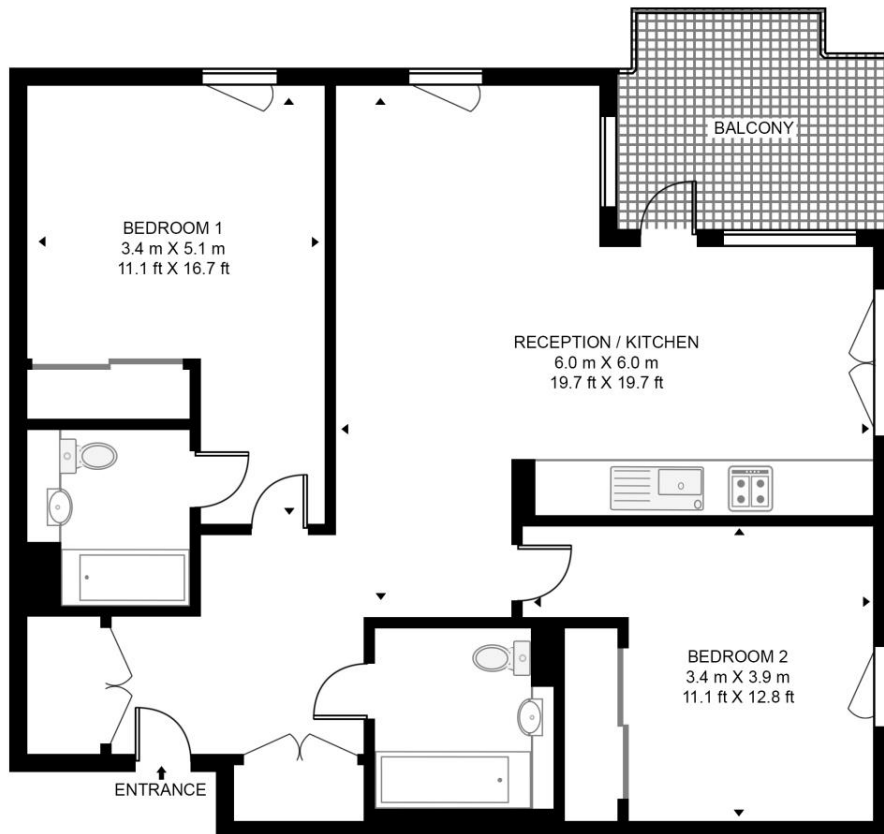
- White City Living
- 2 Double bedrooms
- 2 Bathrooms
- Corner balcony
- 0.2 miles to White City and Wood Lane stations
- 0.3 miles to Westfield
- Approx 794 sq ft / 74 sq m
- EPC B

Floorplan

794 sq ft | 74 sq m

BELVEDERE ROW, WHITE CITY LIVING

APPROXIMATE GROSS INTERNAL FLOOR AREA 794 SQ.FT (73.8 SQ.M)



FOURTH FLOOR



This floor plan has been defined by the RICS Code of Measurement. This floor plan and all others are for approximate representative purposes only and upon usage is agreed to as such by the client.
WWW: hdvirtualart.com | TEL: 0203.974.1567 | EMAIL: info@hdvirtualart.com

Kensington
387 Kensington High Street,
London W14 8QA
+4420 7087 5696
lettingskensington@eu.jll.com

Urban living, your way.

jll.co.uk/residential

© 2019 Jones Lang LaSalle IP, Inc. All rights reserved. All information contained herein is from sources deemed reliable; however, no representation or warranty is made to the accuracy thereof.

