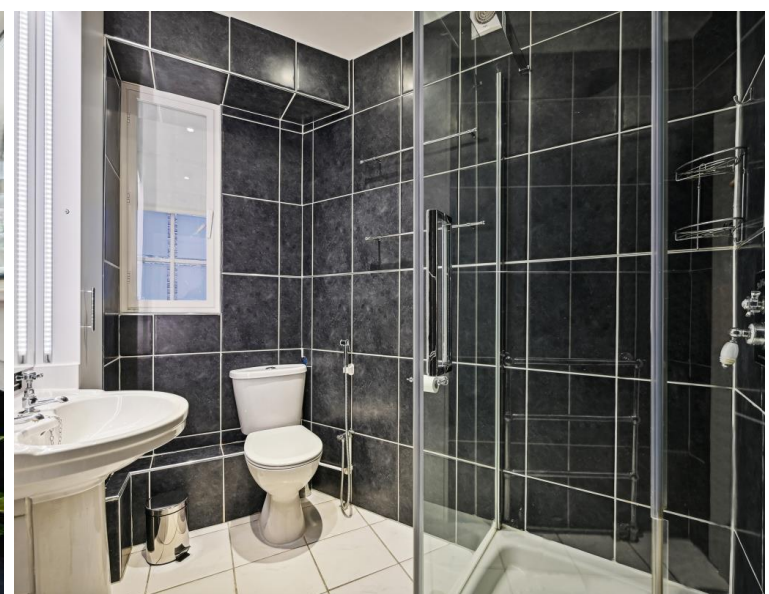


Jubilee Place, London SW3

Price £650 per week - Furnished







Description

A very appealing pied-à-terre located just off Chelsea Green and with a pretty patio garden at the front. Windsor Court is a well-known 30's block with a caretaker and is close to the King's Road as well as all the retail and culinary outlets that Chelsea Green is so well known for.

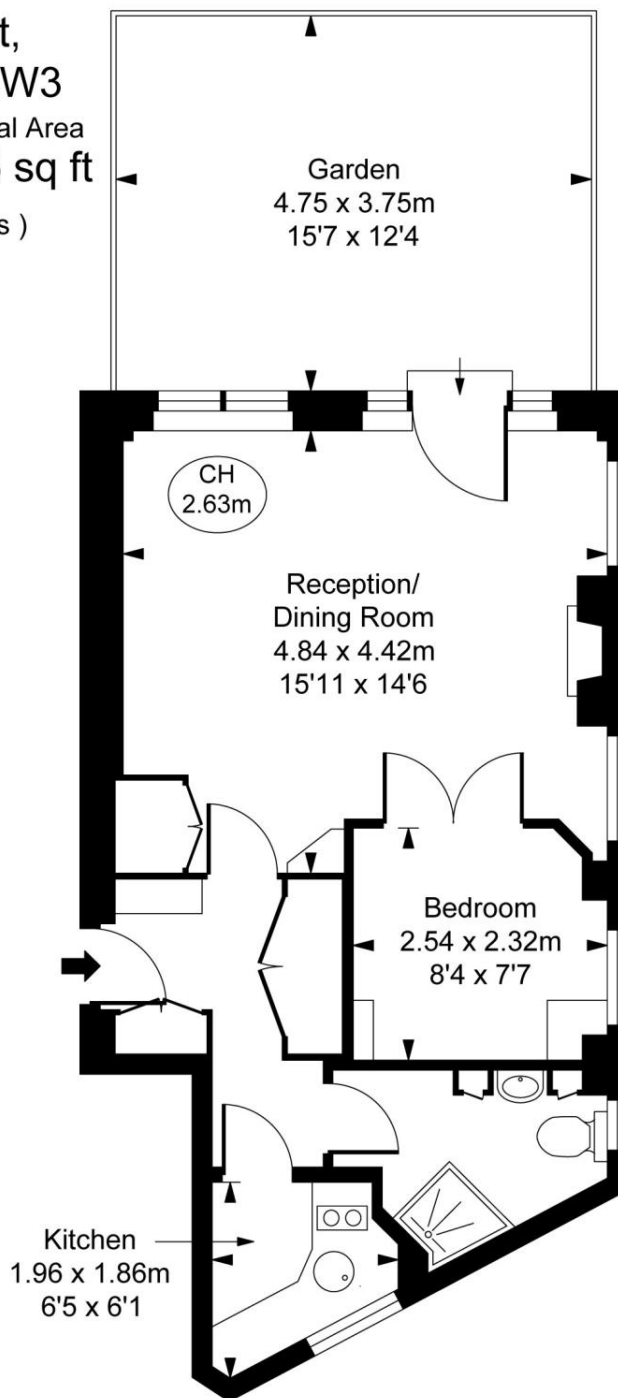
Rent is payable on a monthly basis and you may be required to pay more than a month's rent in advance, depending on your circumstances. You will be required to pay a 1 week holding deposit following a successful offer. Utility bills, council tax, telephone line and broadband are not included in the rent. As well as paying the rent, you may also be required to make some additional permitted payments. If your tenancy does not qualify as an AST, additional fees may apply. Please visit jll.co.uk/fees for details of fees which may be payable when renting a property.

- One bedroom
- Reception room
- Kitchen
- Shower room
- Ground floor
- Furnished
- Garden
- Approx. 426 sq ft (39 sq m)
- EPC: D
- Council Tax: Band D

Floorplan

426 sq ft | 40 sq m

Windsor Court,
Jubilee Place, SW3
Approximate Gross Internal Area
39.61 sq m / 426 sq ft
(CH = Ceiling Heights)



Ground Floor

This plan is not to scale. It is for guidance and not for valuation purposes.
All measurements and areas are approximate only, and have been prepared in accordance with the current edition of the RICS Code of Measuring Practice.
© Fulham Performance

Chelsea
2 Cale Street,
London SW3 3QU
+4420 7399 5010
saleschelsea@jll.com

Urban living, your way.

jll.co.uk/residential

© 2019 Jones Lang LaSalle IP, Inc. All rights reserved. All information contained herein is from sources deemed reliable; however, no representation or warranty is made to the accuracy thereof.

