

Finborough Road, London SW10

Price £650 per week - Furnished







Description

A beautifully presented, modern first floor (no lift) one-bedroom apartment in the sought-after neighbourhood of Chelsea. The apartment benefits from a fitted kitchen with modern appliances and features fabulous contemporary furnishings throughout the reception room with large windows for a bright and airy space.

Situated in a prime location, this apartment is in close proximity to an array of amenities and conveniences, and is well-located with West Brompton and Earl's Court stations both within a 0.6 mile walk.

Rent is payable on a monthly basis and you may be required to pay more than a month's rent in advance, depending on your circumstances. You will be required to pay a 1 week holding deposit following a successful offer. Utility bills, council tax, telephone line and broadband are not included in the rent. As well as paying the rent, you may also be required to make some additional permitted payments. If your tenancy does not qualify as an AST, additional fees may apply. Please visit jll.co.uk/fees for details of fees which may be payable when renting a property.

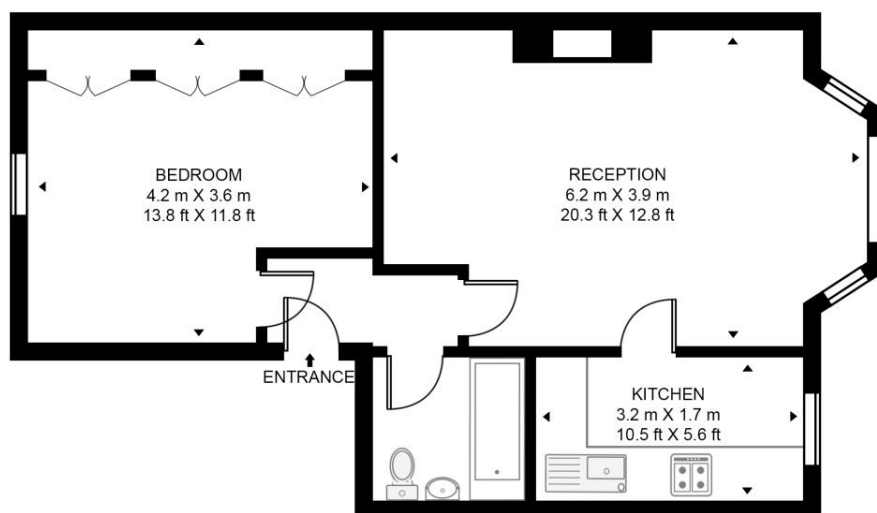
- One bedroom
- Modern kitchen
- One bathroom
- Reception room
- First Floor
- Furnished
- Approx. 514 sq ft
- EPC: D
- Council Tax: Band E

Floorplan

514 sq ft | 48 sq m

FINBOROUGH ROAD

APPROXIMATE GROSS INTERNAL FLOOR AREA 514 SQ.FT (47.8 SQ.M)



SECOND FLOOR



This floor plan has been defined by the RICS Code of Measurement. This floor plan and all others are for approximate representative purposes only and upon usage is agreed to as such by the client.

WWW: hdvirtualart.com | TEL: 0203.974.1567 | EMAIL: info@hdvirtualart.com

Chelsea
2 Cale Street,
London SW3 3QU
+4420 7399 5010
saleschelsea@jll.com

Urban living, your way.

jll.co.uk/residential

© 2019 Jones Lang LaSalle IP, Inc. All rights reserved. All information contained herein is from sources deemed reliable; however, no representation or warranty is made to the accuracy thereof.

