



Old Court Place, London W8

Guide price £695,000 Leasehold





Description

Beautifully presented 2 bedroom, 2 bathroom apartment located just off the prestigious Kensington High Street. Situated on the 3rd floor, this luxurious property offers an exquisite living experience with its prime location and exceptional features in one of London's most sought-after neighbourhoods.

The apartment features high ceilings, creating a sense of spaciousness and elegance throughout.

The open-plan kitchen and reception area adorned with beautiful warm wooden flooring that exudes a welcoming ambiance. There are 2 well-appointed bedrooms, both are designed with built-in storage and the main bedroom also offers an en-suite bathroom. Additionally, there is a communal bathroom off the hallway.

Ideally positioned within 400 yards of the High Street Kensington station and the renowned Kensington Palace and picturesque Kensington Gardens are just a short stroll away.

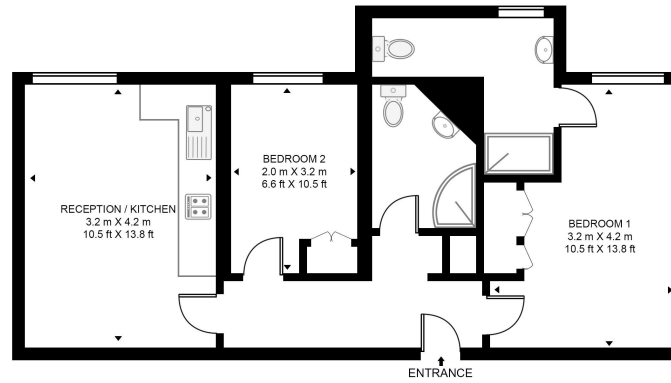


- 2 Bedrooms
- 2 Bathrooms
- High ceilings
- Portered block
- High Street Kensington station within 400 yards
- Kensington Palace, Kensington Gardens within 600 yards
- Approx 538 sq ft / 50 sq m
- EPC D

Floorplan

538 sq ft | 50 sq m

OLD COURT HOUSE, 24 OLD COURT PLACE
APPROXIMATE GROSS INTERNAL FLOOR AREA 538 SQ.FT (50 SQ.M)



THIRD FLOOR



This floor plan has been defined by the RICS Code of Measurement. This floor plan and all others are for approximate representative purposes only and upon usage is agreed to as such by the client.
WWW: hdvirtualart.com | TEL: 0203.974.1567 | EMAIL: info@hdvirtualart.com

Kensington
387 Kensington High Street,
London W14 8QA
+4420 7087 5696
lettingskensington@eu.jll.com

Urban living, your way.

jll.co.uk/residential

© 2019 Jones Lang LaSalle IP, Inc. All rights reserved. All information contained herein is from sources deemed reliable; however, no representation or warranty is made to the accuracy thereof.

