



# Lisgar Terrace, London W14

Asking price £899,000 Leasehold









## Description

A charming 2 bedroom, 2 bathroom apartment situated in a secure gated development. Within a mere 0.7 miles from the picturesque Holland Park and 1.4 miles from the historic Kensington Gardens followed by Hyde Park, this 2nd floor apartment offering prime location, stylish urban living and a wealth of greenery nearby.

The dual aspect reception area is flooded with natural light pouring in through the elegant sash windows creating an inviting and airy atmosphere. The main bedroom features an en-suite bathroom, ensuring privacy and convenience, as well as ample integrated storage to keep your space organized. There is also a second bedroom and a communal bathroom off the hallway.

For commuters Kensington Olympia station just 530 yards away and a mere 700 yards to West Kensington station in the other direction.

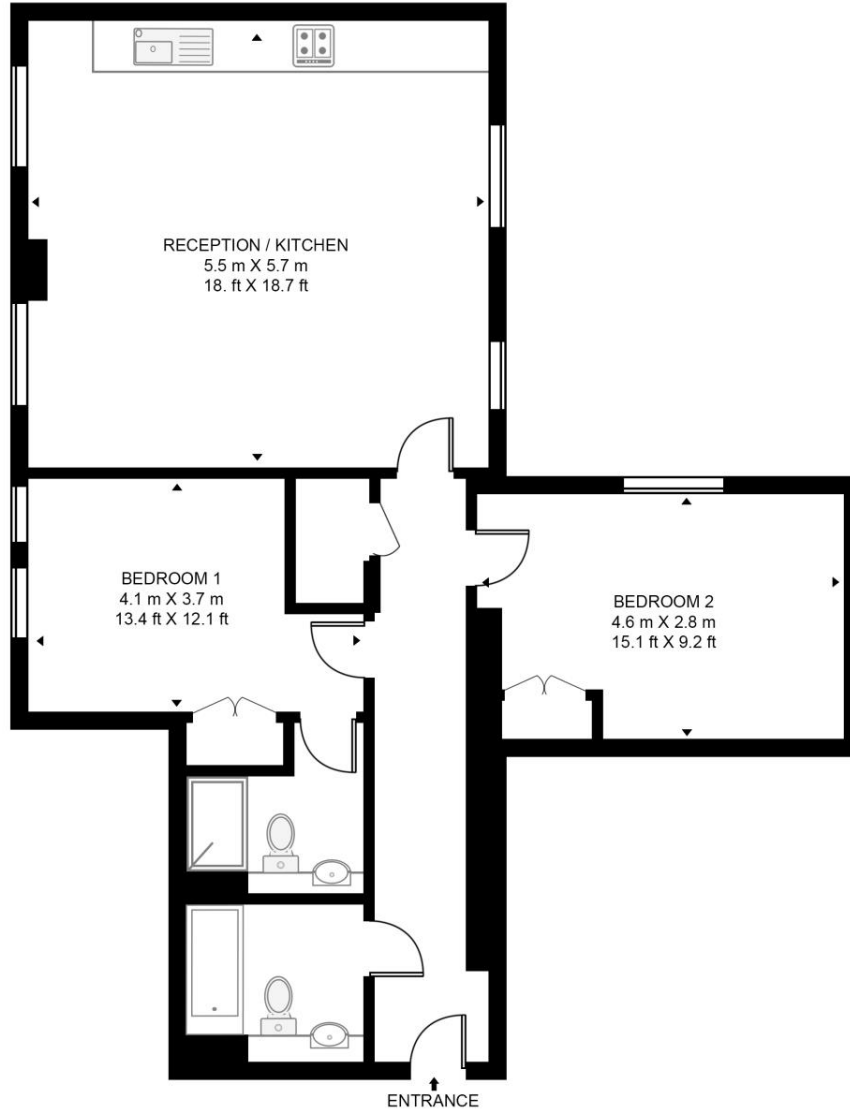
- 2 Double bedrooms
- 2 Bathrooms
- Dual aspect reception
- Approx 818 sq ft / 76 sq m
- Holland Park 0.7 miles
- Kensington Gardens/Hyde Park 1.4 miles
- Kensington Olympia station within 530 yards
- West Kensington station within 700 yards
- EPC B

# Floorplan

819 sq ft | 76 sq m

## DORIGEN COURT, LISGAR TERRACE

APPROXIMATE GROSS INTERNAL FLOOR AREA 819 SQ.FT (76.1 SQ.M)



SECOND FLOOR



This floor plan has been defined by the RICS Code of Measurement. This floor plan and all others are for approximate representative purposes only and upon usage is agreed to as such by the client.  
WWW: [hdvirtualart.com](http://hdvirtualart.com) | TEL: 0203.974.1567 | EMAIL: [info@hdvirtualart.com](mailto:info@hdvirtualart.com)

Kensington  
387 Kensington High Street,  
London W14 8QA  
+4420 7087 5696  
[lettingskensington@eu.jll.com](mailto:lettingskensington@eu.jll.com)

*Urban living, your way.*

[jll.co.uk/residential](http://jll.co.uk/residential)

© 2019 Jones Lang LaSalle IP, Inc. All rights reserved. All information contained herein is from sources deemed reliable; however, no representation or warranty is made to the accuracy thereof.

