



New Tannery Way, London SE1

Price £790 per week - Furnished







Description

A fully furnished 2 bedroom apartment in The Crosse, part of London Square Bermondsey development in the vibrant and popular Bermondsey / London Bridge area SE1.

Situated on the 2nd floor, this spacious 2 bedroom apartment is offered fully furnished and comprises a large open plan reception area and fitted kitchen with Siemens appliances, large balcony with views over the courtyard, 2 double bedrooms with fitted wardrobes and en-suite to master, 2 luxury bathrooms, wood flooring, built-in surround sound and excellent storage space.

The development boasts fantastic amenities which include 12 hour concierge and resident's gym (once the gym is completed). The Crosse is situated in the vibrant and trendy hub of Bermondsey / London Bridge, with Bermondsey Station and London Bridge Station within walking distance.

Rent is payable on a monthly basis and you may be required to pay more than a month's rent in advance, depending on your circumstances. You will be required to pay a 1 week holding deposit following a successful offer. Utility bills, council tax, telephone line and broadband are not included in the rent. As well as paying the rent, you may also be required to make som

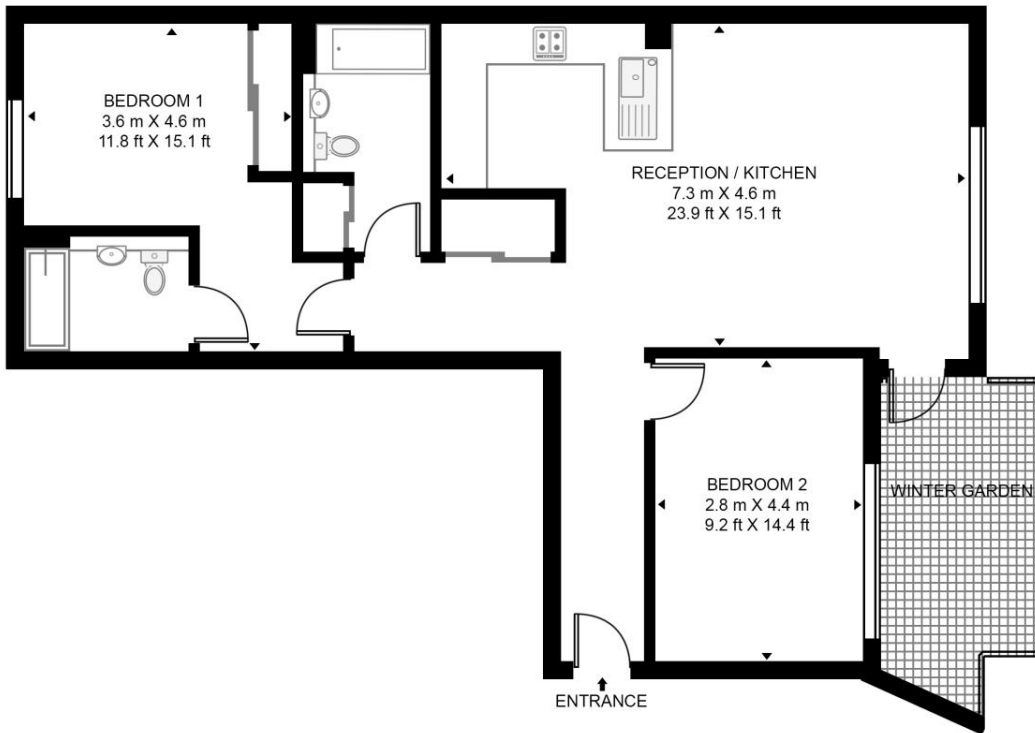
- 2 Bedrooms
- 2 Bathrooms
- 2nd Floor
- Large Balcony with views over the courtyard
- Open plan contemporary kitchen
- 0.8 miles from South Bermondsey Overground Station
- Approx. 1,008 sq ft (93.6 sq m)
- Furnished
- EPC: B
- Council tax: Band E

Floorplan

1,008 sq ft | 94 sq m

THE CROSSE, BERMONDSEY

APPROXIMATE GROSS INTERNAL FLOOR AREA 1008 SQ.FT (93.6 SQ.M)



SECOND FLOOR

HDVA

This floor plan has been defined by the RICS Code of Measurement. This floor plan and all others are for approximate representative purposes only and upon usage is agreed to as such by the client.

WWW: hdvirtualart.com | TEL: 0203.974.1567 | EMAIL: info@hdvirtualart.com

City
25 Walbrook The Walbrook
Building,
London EC4N 8AF
+4420 7337 4000

Urban living, your way.

jll.co.uk/residential

© 2019 Jones Lang LaSalle IP, Inc. All rights reserved. All information contained herein is from sources deemed reliable; however, no representation or warranty is made to the accuracy thereof.

