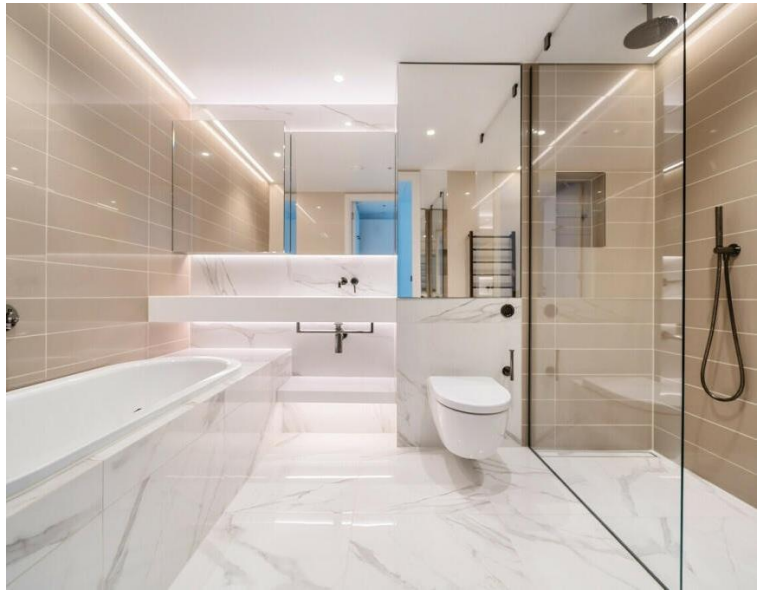


## Cascade Way, London W12

Asking price £3,000,000 Leasehold







## Description

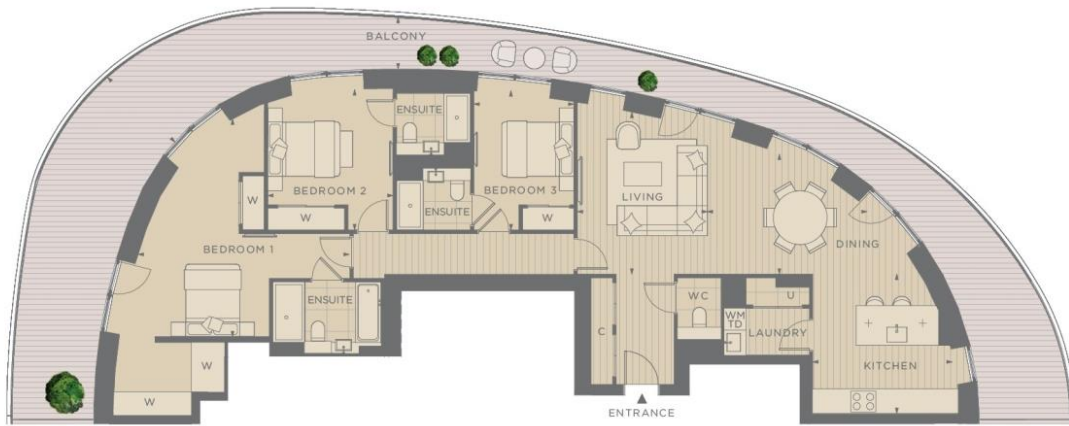
Luxury 3 bedroom apartment situated on the 29th floor with breath taking views in White City's new landmark, Cassini Tower by Berkley Group. A world of refined beauty as you enter the open-plan kitchen and reception area, where contemporary design seamlessly blends with functionality. The dining area presents an ideal backdrop for hosting gatherings, while a utility room, laundry room and guest WC add practicality to everyday life. There are 3 spacious double bedrooms, each boasting its own en-suite bathroom. The sensational 789 sq ft, 180° private wrap-around balcony accessible from every room that flood the rooms with natural light - courtesy of the floor-to-ceiling glass panels -, greet each morning with awe-inspiring views of the cityscape and the beautifully landscaped Water Gardens. Cassini Tower provides a host of luxury conveniences and world-class amenities, including a refreshing swimming pool, hydro-pool, sun terrace, sauna, steam room, state-of-the-art gymnasium, private training zones, and indulgent treatment rooms. Furthermore, dwellers can enjoy the convenience of a round-the-clock concierge service, a sophisticated business lounge, an exclusive club lounge, a trendy café, versatile event spaces, an entertainment suite, and 2 exclusive private cinemas.

- White City Living
- 180° panorama balcony with 29th floor views
- 3 Double bedrooms
- 3 Bathrooms plus guest WC
- Premium resident amenities
- Approx 1523 sq ft / 141.5 sq m
- EPC TBC

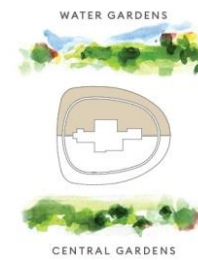
# Floorplan

1,523 sq ft | 142 sq m

## TYPE 29B ELITE THREE BEDROOM



Plots	J29.01	
<b>Internal measurements</b>	<b>141.5 m<sup>2</sup></b>	<b>1523 sq ft</b>
<b>Balcony</b>	<b>73.3 m<sup>2</sup></b>	<b>789 sq ft</b>
Kitchen	3.88 x 3.86 m	12ft 9" x 12ft 8"
Living	3.60 x 4.50 m	11ft 10" x 14ft 9"
Dining	3.33 x 4.43 m	10ft 11" x 14ft 6"
Bedroom 1	6.03 x 5.87 m	19ft 9" x 19ft 3"
Bedroom 2	3.89 x 3.48 m	12ft 9" x 11ft 5"
Bedroom 3	3.86 x 2.77 m	12ft 8" x 9ft 1"
Balcony	2.60 x 1.43 m	8ft 6" x 4ft 8"



C: Cupboard U: Utility Cupboard W: Wardrobe  
WM: Washer Machine TD: Tumble Dryer S: Shelving + Pendant

Floorplans shown for White City Living are for approximate measurements only and are not necessarily shown to scale. Exact layouts and sizes may vary. All measurements may vary within a tolerance of 5%. The dimensions are not intended to be used for carpet sizes, appliance sizes or items of furniture. Kitchen appliance/sink positions indicated are for guidance only. External cladding and window mullion locations and sizing are indicative and subject to change.

Kensington  
387 Kensington High Street,  
London W14 8QA  
+4420 7087 5696  
lettingskensington@eu.jll.com

*Urban living, your way.*

[jll.co.uk/residential](http://jll.co.uk/residential)

© 2019 Jones Lang LaSalle IP, Inc. All rights reserved. All information contained herein is from sources deemed reliable; however, no representation or warranty is made to the accuracy thereof.

