



Kensington Road, London W8

Price £5,000 per week - Furnished







Description

A stunning five bedroom period-style apartment in the heart of Kensington, well located within a short walk to surrounding Tube and Overground stations.

The apartment boasts three large bedrooms with two smaller bedrooms, is situated on the third floor and accompanied by seven elegant bathrooms with a spacious reception room and a separate dining room.

Each bedroom is thoughtfully equipped with its own en suite bathroom, while two additional family bathrooms provide convenience for residents and guests alike. The apartment further benefits from a dressing room conveniently linked to one of the bedrooms.

The apartment further benefits from a bright and fitted kitchen with ample storage space. The reception room and dining room both display stunning chandeliers, and a large 16-person dining table. The apartment is well presented with unique furniture and window dressings throughout.

Rent is payable on a monthly basis and you may be required to pay more than a month's rent in advance, depending on your circumstances. You will be required to pay a 1 week holding de

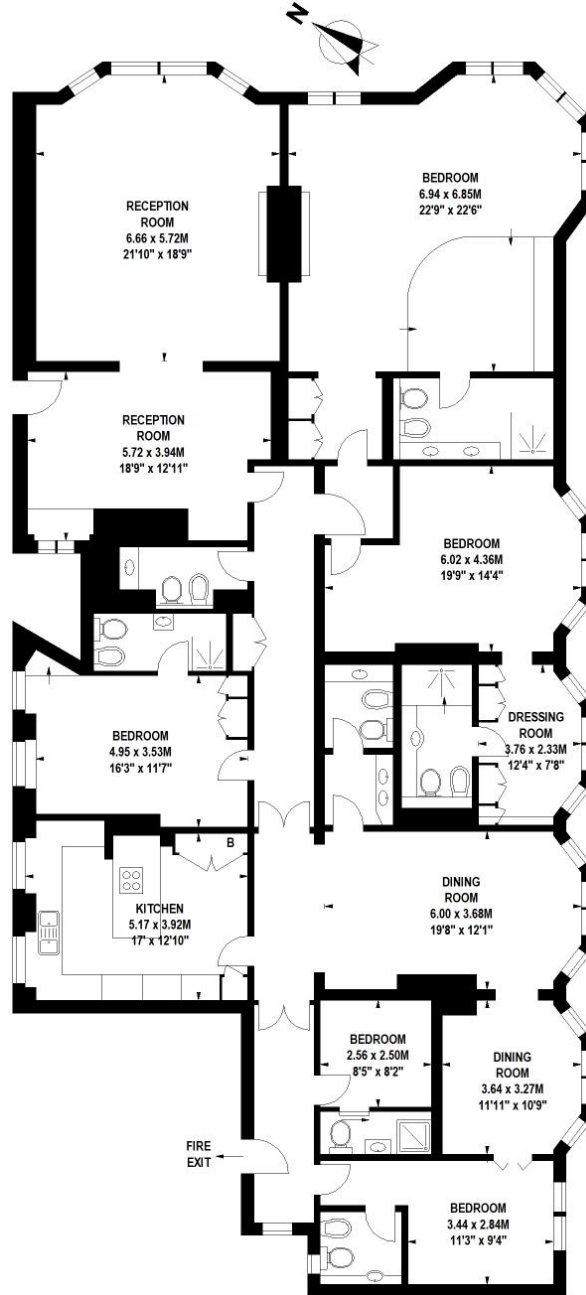
- Five bedrooms
- Seven bathrooms (five en suite)
- One reception room
- Separate dining room
- Dressing room
- Third floor
- Approx. 3305 sq ft (307 sq m)
- Council Tax: Band H
- EPC: C
- Deposit: £30,000

Floorplan

3,305 sq ft | 307 sq m

Cumberland House, Kensington Road, W8

Approximate Gross Internal Area 307 sq m / 3305 sq ft



Third Floor

Floor Plan produced for JLL by Mays Floorplans ©. Tel 020 3397 4594

Illustration for identification purposes only, not to scale

All measurements are maximum, and include wardrobes and window bays where applicable

Knightsbridge
174 Brompton Road,
London SW3 1HP
+4420 7306 1600
SalesKnightsbridge@jll.com

Urban living, your way.

jll.co.uk/residential

© 2019 Jones Lang LaSalle IP, Inc. All rights reserved. All information contained herein is from sources deemed reliable; however, no representation or warranty is made to the accuracy thereof.

