



Radnor Walk, London SW3

Price £2,350 per week - Unfurnished







Description

A luxurious four-bedroom residence featuring a study, three bathrooms (including two en suite), and a charming terrace located in a wonderful location on Radnor Walk. The house is well presented throughout and is located within easy walking distance of the Kings Road, Sloane Square and the other amenities that Chelsea has to offer.

Structured over four floors, this house offers adequate space throughout with three double bedrooms and one single bedroom, a large reception room with a separate kitchen, a utility room and a cinema room.

Rent is payable on a monthly basis and you may be required to pay more than a month's rent in advance, depending on your circumstances. You will be required to pay a 1 week holding deposit following a successful offer. Utility bills, council tax, telephone line and broadband are not included in the rent. As well as paying the rent, you may also be required to make some additional permitted payments. If your tenancy does not qualify as an AST, additional fees may apply. Please visit jll.co.uk/fees for details of fees which may be payable when renting a property.

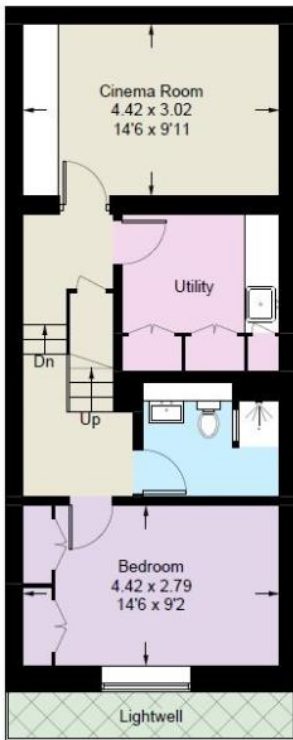
- Four bedrooms
- Three bathrooms (two en suite)
- Cinema room
- Separate kitchen
- Four storey house
- Terrace
- Large kitchen
- Utility room
- 1850 sq ft (171.9 sq m)
- EPC: D

Floorplan

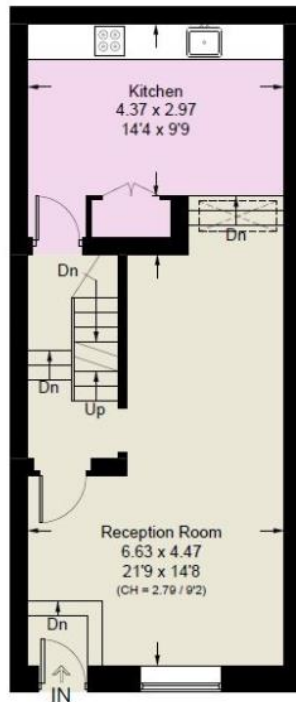
1,850 sq ft | 172 sq m

Radnor Walk, SW3

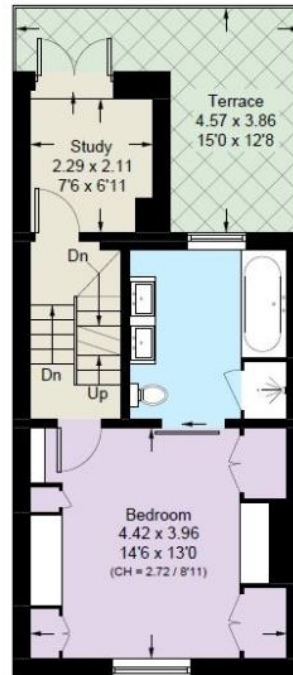
Approximate Area = 1850 sq ft / 171.9 sq m
Including Limited Use Area (12 sq ft / 1.1 sq m)



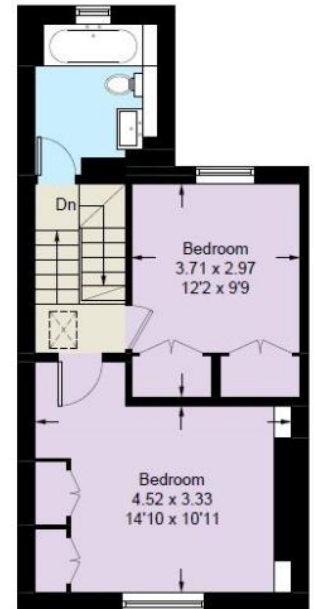
Lower Ground Floor



Ground Floor



First Floor



Second Floor

This plan is for layout guidance only. Not drawn to scale unless stated. Windows and door openings are approximate. Whilst every care is taken in the preparation of this plan, please check all dimensions, shapes and compass bearings before making any decisions reliant upon them. (ID1108680)

Chelsea
2 Cale Street,
London SW3 3QU
+4420 7399 5010
saleschelsea@jll.com

Urban living, your way.

jll.co.uk/residential

© 2019 Jones Lang LaSalle IP, Inc. All rights reserved. All information contained herein is from sources deemed reliable; however, no representation or warranty is made to the accuracy thereof.

