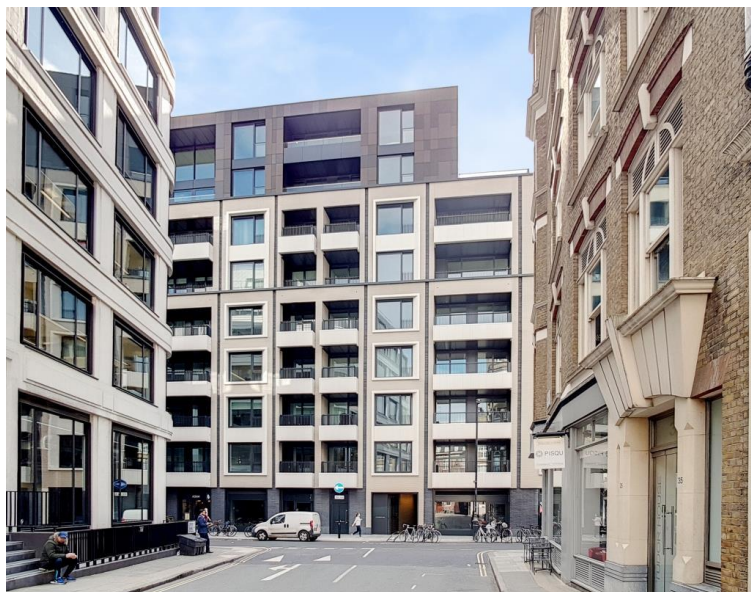


# Rathbone Place, London W1T

Price £2,500 per week - Unfurnished







## Description

You enter the apartment to a spacious reception room with views out over the private balcony and a fully fitted open-plan kitchen making a fantastic entertaining space with a stair case leading up to the private roof terrace. The principal bedroom suite has a fitted dressing area and en-suite bathroom. There is a second double bedroom also with a fitted dressing are and en-suite bathroom.

Residents have access to a 24 hour concierge, gym, swimming pool, sauna and steam room, beautiful gardens, residents' lounge, wine storage and tasting room, screening room,

Moments from Oxford Street and located in the heart of London's West End, Rathbone Square is ideal for transport links in and around London with The City and West London being just 10 minutes away via the underground.

Rent is payable on a monthly basis and you may be required to pay more than a month's rent in advance, depending on your circumstances. You will be required to pay a 1 week holding deposit following a successful offer. Utility bills, council tax, telephone line and broadband are not included in the rent. As well as paying the rent, you may also be required to make some additional permitted payments. If your tenancy does not q

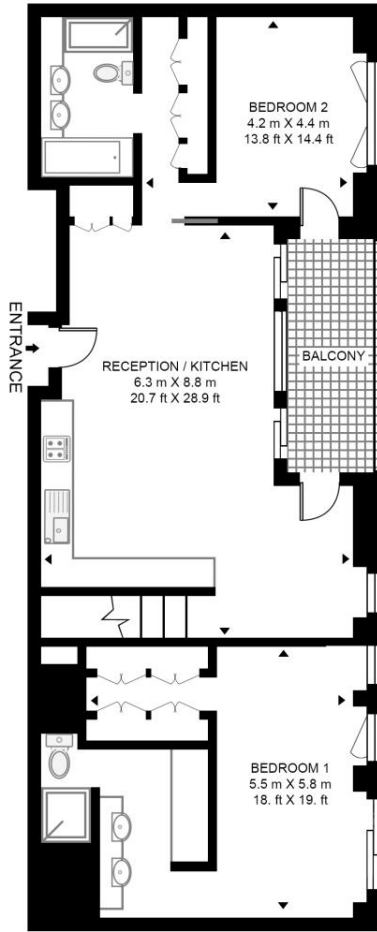
- Penthouse Apartment
- Available Now
- Large Private Terrace
- Approx. 116sqm / 1,246sqft
- 24hr Concierge
- Swimming Pool
- Sauna and Stem Room
- Gym
- Council tax: Band G
- Deposit amount: £15,000

# Floorplan

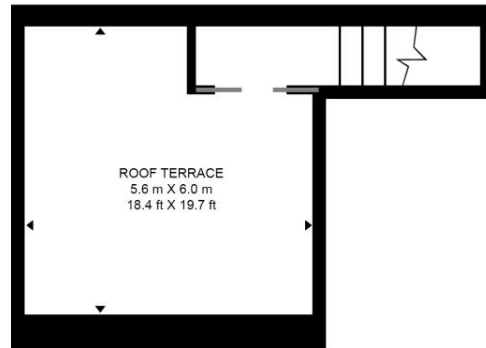
1,246 sq ft | 116 sq m

## RATHBONE SQUARE, RATHBONE PLACE

APPROXIMATE GROSS INTERNAL FLOOR AREA 1246 SQ.FT (115.8 SQ.M)



EIGHTH FLOOR



NINTH FLOOR



This floor plan has been defined by the RICS Code of Measurement. This floor plan and all others are for approximate representative purposes only and upon usage is agreed to as such by the client.

WWW: [hdvirtualart.com](http://hdvirtualart.com) | TEL: 0203.974.1567 | EMAIL: [info@hdvirtualart.com](mailto:info@hdvirtualart.com)

Mayfair and Marylebone  
13a St George Street,  
London W1S 2FQ  
+44 207 399 5550  
[mayfair@jll.com](mailto:mayfair@jll.com)

*Urban living, your way.*

[jll.co.uk/residential](http://jll.co.uk/residential)

© 2019 Jones Lang LaSalle IP, Inc. All rights reserved. All information contained herein is from sources deemed reliable; however, no representation or warranty is made to the accuracy thereof.

