



## Beaufort Gardens, London SW3

Price £300 per week - Furnished









## Description

Please note there is no washing machine available at this property and bills are not included in the rent.

A stylish first floor studio flat (with lift) in this period building in the heart of Knightsbridge. The property comprises reception/bedroom, shower room and a fully fitted, open-plan kitchen. The apartment has been finished to the highest of standards and it is conveniently located moments from the many amenities of Knightsbridge and the open spaces of Hyde Park.

Rent is payable on a monthly basis and you may be required to pay more than a month's rent in advance, depending on your circumstances. You will be required to pay a 1 week holding deposit following a successful offer. Utility bills, council tax, telephone line and broadband are not included in the rent. As well as paying the rent, you may also be required to make some additional permitted payments. If your tenancy does not qualify as an AST, additional fees may apply. Please visit [jll.co.uk/fees](http://jll.co.uk/fees) for details of fees which may be payable when renting a property.

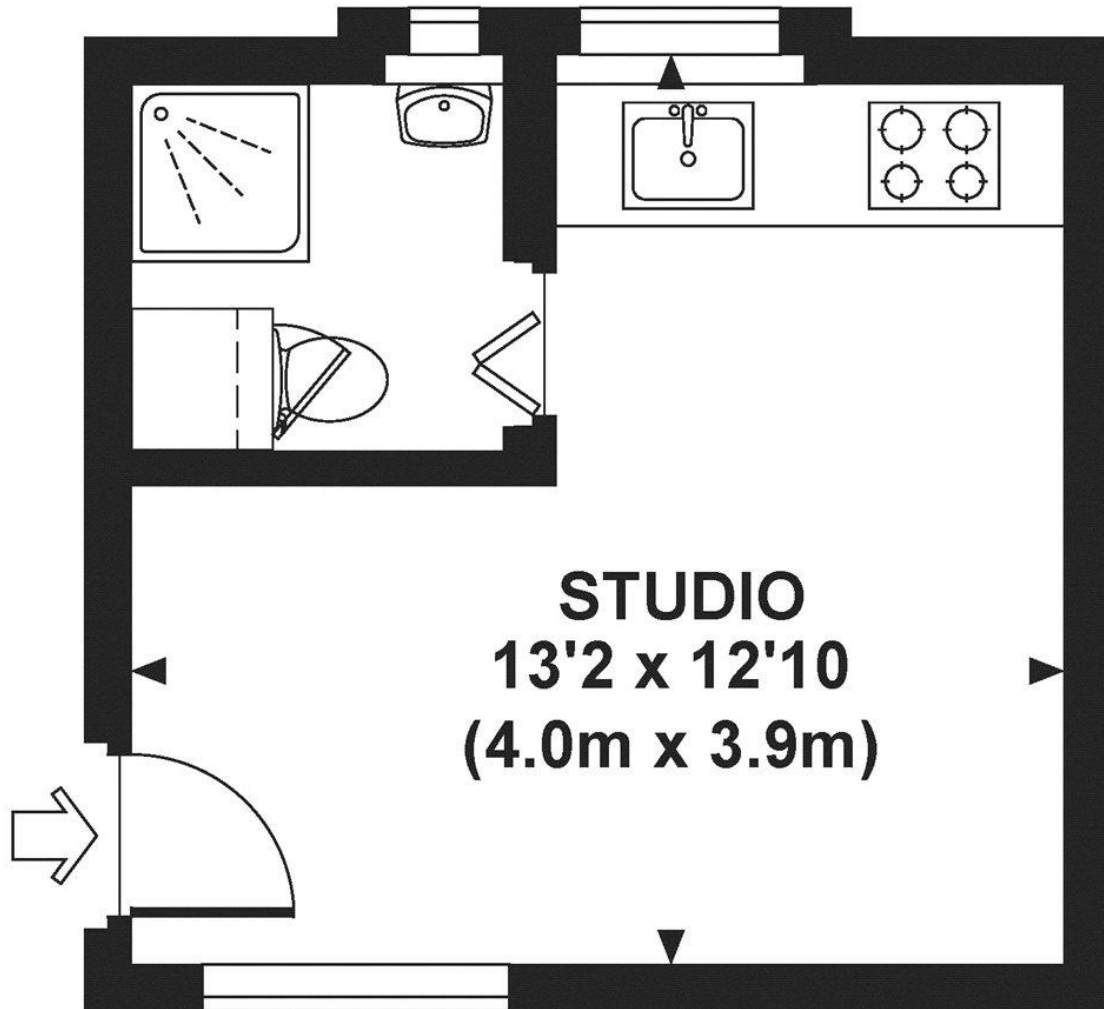
- Reception / bedroom
- Open plan kitchen
- Shower room
- First floor
- Lift
- Approx. 166 sq ft (15 sq m)
- Furnished
- EPC: D
- No access to a washing machine
- Council Tax: Band A

# Floorplan

166 sq ft | 15 sq m



Approx. gross internal area  
166 Sq Ft. / 15.4 Sq M.



## FIRST FLOOR



All measurements are approximate and for illustration purposes  
only as defined by the RICS Code of Measuring Practice © 2014  
Dowling Jones Design, www.dowlingjones.com 020 7610 9933

Knightsbridge  
174 Brompton Road,  
London SW3 1HP  
+4420 7306 1600  
SalesKnightsbridge@jll.com

*Urban living, your way.*

[jll.co.uk/residential](http://jll.co.uk/residential)

© 2019 Jones Lang LaSalle IP, Inc. All rights reserved. All information contained herein is from sources deemed reliable; however, no representation or warranty is made to the accuracy thereof.

