

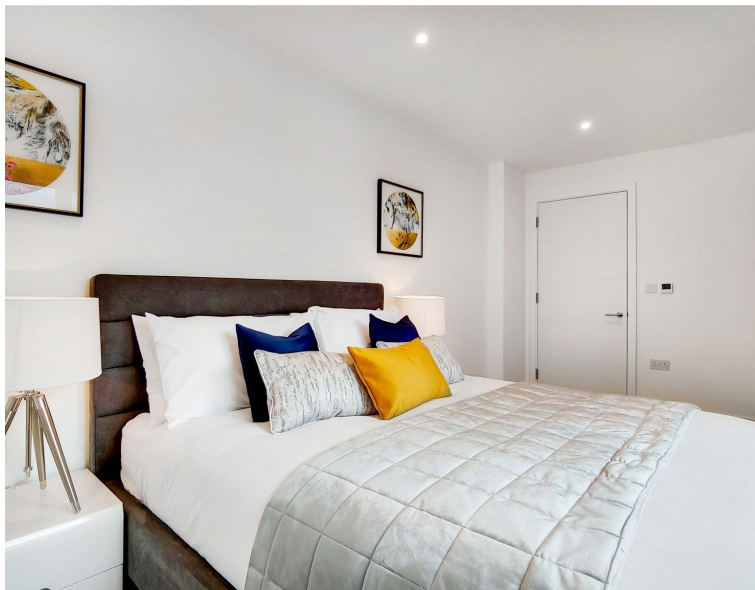


Sinclair Road, Kensington W14

Price £875 per week - Furnished







Description

A stunning two bedroom property to let in a portered building just moments from Kensington Olympia. Arranged over the fourth floor, this property has been furnished to a very high standard and comprises two double bedrooms with built in storage, a large family sized stylish bathroom, open plan kitchen and living room with wood floors.

Atelier is a well managed new development located between Kensington High Street, Hammersmith and Shepherds bush. There are lots of bus, overground and tube stations within a short walk along with many local restaurants and bars.

Rent is payable on a monthly basis and you may be required to pay more than a month's rent in advance, depending on your circumstances. You will be required to pay a 1 week holding deposit following a successful offer. Utility bills, council tax, telephone line and broadband are not included in the rent. As well as paying the rent, you may also be required to make some additional permitted payments. If your tenancy does not qualify as an AST, additional fees may apply. Please visit jll.co.uk/fees for details of fees which may be payable when renting a property.

- 2 Bedrooms
- 1 Bathroom
- Concierge
- Lift
- Communal gardens
- Resident gym
- Approx 741 sq ft
- Furnished
- EPC: B
- Council tax: Band G

Floorplan

740 sq ft | 69 sq m

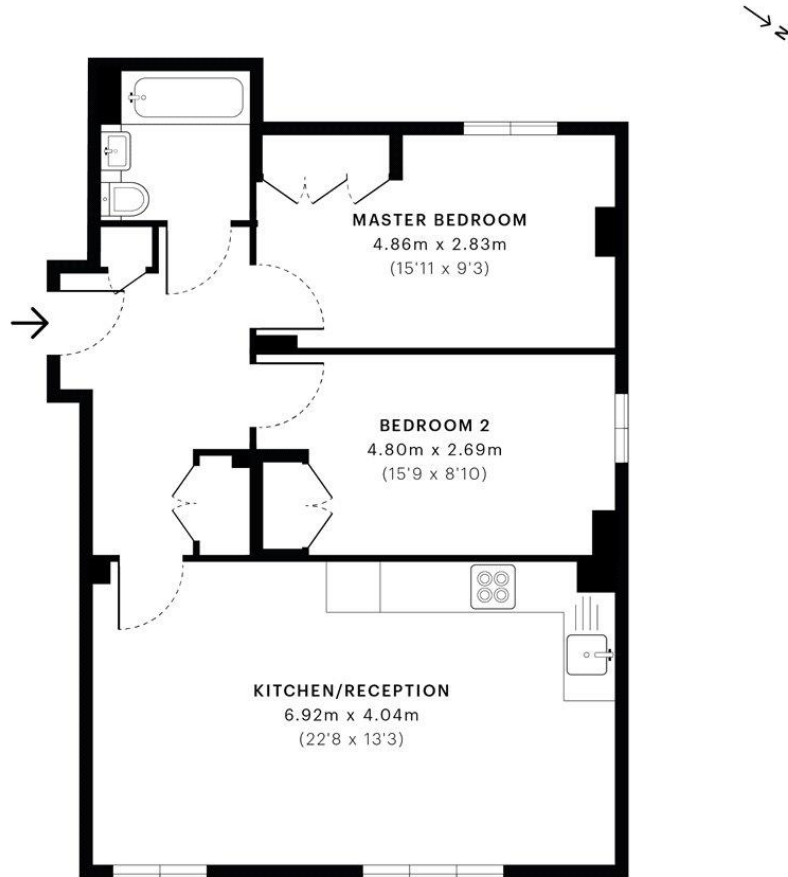


Atelier Apartments, W14

CAPTURE DATE
27/11/2019

LASER SCAN POINTS
32,889,410

GROSS INTERNAL AREA
68.8 Sqm / 740.8 Sqft



— Fourth Floor

 GROSS INTERNAL AREA (GIA)
The footprint of the property.
68.8 Sqm / 740.8 Sqft

 NET INTERNAL AREA (NIA)
Excludes walls and external features,
includes washrooms, restricted head
65.7 Sqm / 707.2 Sqft

 EXTERNAL STRUCTURAL FEATURES
Balconies, terraces, verandas etc.
0.0 Sqm / 0.0 Sqft

 RESTRICTED HEAD HEIGHT
Limited use area under 1.5m
0.0 Sqm / 0.0 Sqft



Spec floor plans are produced in accordance with the Royal Institution of Chartered Surveyors' Property Measurement Standards. Plots and gardens are illustrative only and are excluded from all area calculations. Due to rounding, numbers may not add up precisely. All measurements shown for the individual room lengths and widths are the maximum points of measurements captured in the scan.



IPMS 3B RESIDENTIAL
69.4 Sqm / 747.5 Sqft

IPMS 3C RESIDENTIAL
66.3 Sqm / 714.0 Sqft

SPEC ID
5ddd5c5203c0f90a14102847

Kensington
387 Kensington High Street,
London W14 8QA
+4420 7087 5696
lettingskensington@eu.jll.com

Urban living, your way.

jll.co.uk/residential

© 2019 Jones Lang LaSalle IP, Inc. All rights reserved. All information contained herein is from sources deemed reliable; however, no representation or warranty is made to the accuracy thereof.

